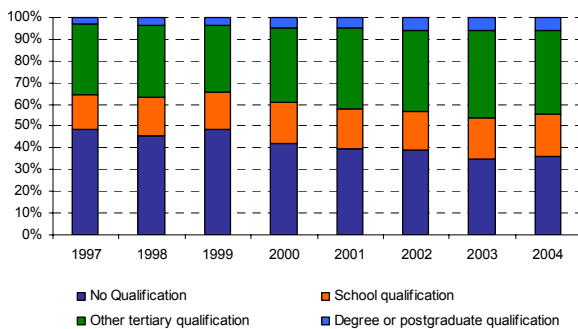


# Economic outcomes for Māori from tertiary education

## Tertiary qualifications in the Māori population

Over the last eight years, the proportion of the Maori population with a tertiary qualification has increased, from 35 percent in 1998 to 44 percent in 2003. Over the same period, the proportion with a degree qualification or higher increased from 3 to 6 percent.

### Distribution of Māori population aged 25-64 by highest qualification 1997-2004

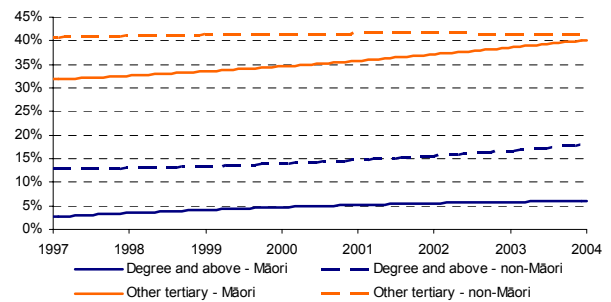


Source: Statistics NZ, Household Labour Force Survey (June quarters)

Both the Māori and the non-Māori populations now have a similar proportion with tertiary qualifications below degree level. However, the proportion of the Māori population with a degree or higher remains significantly lower than for the non-Māori population. The proportion of the Māori population with degrees and above is growing, but not as fast as in the non-Māori population.

These patterns reflect the higher recent participation and completion rates for Māori in certificates. At degree level and above, Maori participation rates were higher in 2004 than eight years earlier, but continue to be below those of non-Māori. Māori completion rates at degree level and above are also lower than those of non-Māori.

## Percentage of Māori and non-Māori populations aged 25-64 by highest qualification 1997-2004

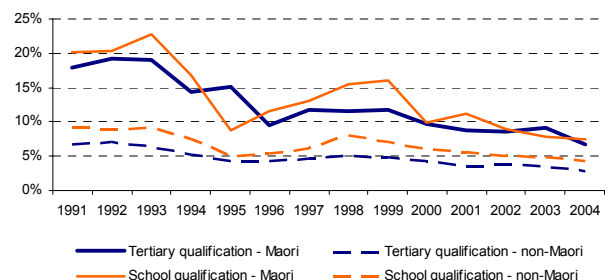


Source: Statistics NZ, Household Labour Force Survey (June quarters)  
Note: Series have been smoothed using trend lines.

## Employment

Over the last 14 years, Māori unemployment rates have been substantially higher than those of non-Māori. Over this period, Māori with a tertiary qualification have had somewhat lower unemployment rates than Māori with a school qualification only<sup>1</sup>.

### Unemployment rates for Māori and non-Māori aged 15 and over by highest qualification 1991-2004



Source: Statistics NZ, Household Labour Survey (June quarters)

The difference in unemployment rates between those with tertiary and school qualifications was larger and more consistent for non-Māori. This may reflect the higher proportion of non-Maori with degree level qualifications.

<sup>1</sup> Māori unemployment rates by level of tertiary qualification are not available, due to the small sample sizes in the HLFS.

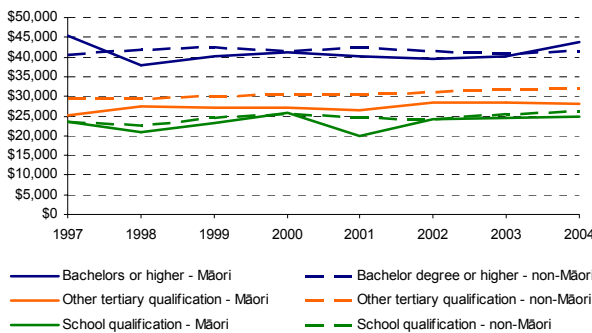
# Economic outcomes for Māori from tertiary education

## Income

Over the last eight years, there has been no significant difference in median incomes between Māori and non-Māori with qualifications at degree level or higher. Nor has there been much difference in income between Māori and non-Māori with school qualifications only.

However, the median income of Maori with tertiary qualifications below degree level has been lower than that of non-Maori. This may reflect differences in the type and level of qualifications.

### Median real annual income for Māori and non-Māori aged 25-64 by highest qualification 1997-2004

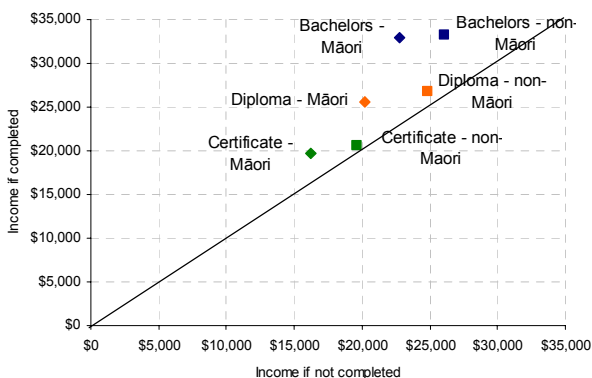


Source: Statistics NZ, New Zealand Income Survey

## Additional income from completion

Data from the Integrated Dataset on Student Loan Scheme Borrowers shows that there is a greater income advantage in completing a qualification for Māori than for non-Māori.

### Mean annual incomes of Māori and non-Māori in 2000 who last studied and borrowed in 1997



Source: Statistics NZ, Integrated Dataset on Student Loan Scheme Borrowers

The graph compares the mean incomes of people with a completed qualification with the mean incomes of people with a partially completed qualification. If a point is above the diagonal line, it means that income of those who completed is higher than those who left without completing. The distance from the diagonal line represents the advantage of completing a qualification in terms of additional income.

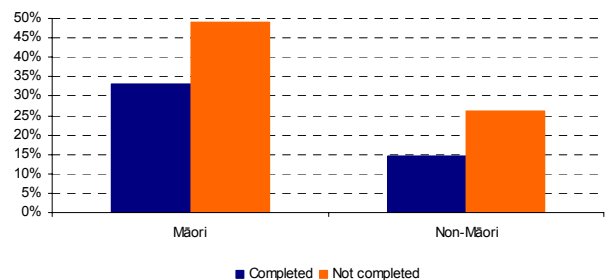
Māori who have completed qualifications have similar levels of income to non-Māori who have completed at the same level. However, Maori who stopped studying without completing a qualification have notably lower income than non-Māori who studied at the same level and did not complete. Therefore, there is a greater advantage to Māori in completing a qualification.

## Reliance on benefits

The Integrated Dataset also provides information on the likelihood of receiving benefit income in the years following study. The graph below shows the proportions of each group who received some income from benefits in the third year after finishing studying.

Māori who completed a qualification are less likely to rely on benefit income after study than Māori who did not complete a qualification. However, Māori in both groups are more likely to rely on benefit income than non-Māori. This reflects the higher proportion of Māori studying at certificate level.

### Percentage of Māori and non-Māori in receipt of state benefits in 2000 for those who last studied and borrowed in 1997



Source: Statistics NZ, Integrated Dataset on Student Loan Scheme Borrowers