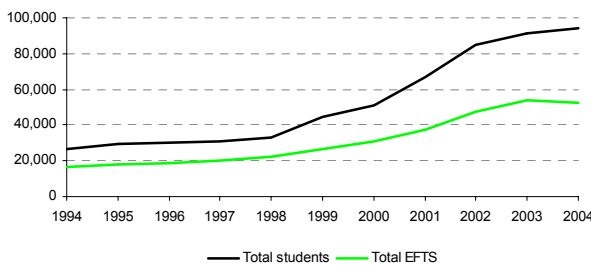


Māori participation in tertiary education - 2004

Overview

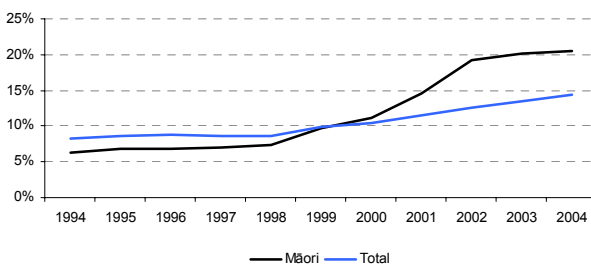
In 2004, the growth in Māori student numbers in tertiary education slowed, with only a 3% increase from 2003. The total EFTS consumed by Māori students fell slightly compared to 2003, indicating increased take up of part-time/part-year study.

Maori students and EFTS in formal tertiary education 1994-2004



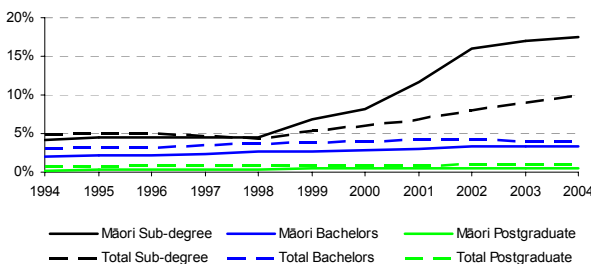
Maori participation rates have only increased slightly since 2002. However, non-Maori participation rates have continued to rise at sub-degree level.

Māori and non-Māori age-standardised participation rates in formal tertiary education 1994-2004



Qualification level

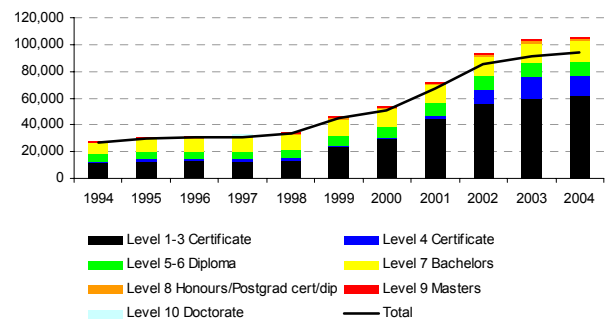
Maori participation rates in sub-degree qualifications continue to exceed those of non-Maori. However,



non-Maori rates are continuing to increase at this level. At bachelors level, Maori participation rates have levelled off just below those of non-Maori. At postgraduate level, Maori rates continue to rise but are still below those of non-Maori.

From 2003 to 2004, there was a decrease in Maori enrolments in level 4 certificates and diplomas. Enrolments in postgraduate degrees continued to increase, with a 9% increase in honours/postgraduate certificates and diplomas.

Maori students in formal tertiary education by qualification level 1994-2004



While nearly two-thirds of Māori students were enrolled in level 1-3 certificates in 2004, enrolments at this level accounted for less than half of the EFTS consumed by Māori students. This reflects that many of these qualifications require less than a year's study.

Maori students and EFTS in formal tertiary education by qualification level 2004

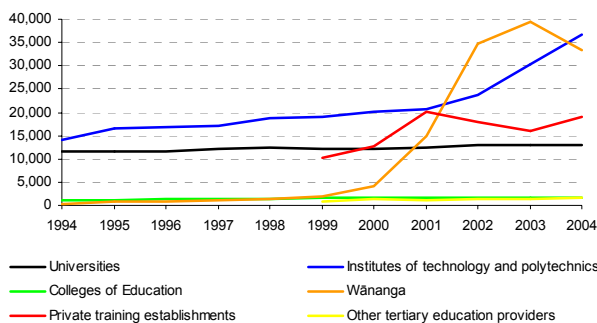
	Students		EFTS	
	Number	Percentage	Number	Percentage
Level 1-3 Certificate	61,885	65.5%	24,066	45.7%
Level 4 Certificate	15,325	16.2%	9,495	18.0%
Level 5-6 Diploma	10,382	11.0%	6,309	12.0%
Level 7 Bachelors	15,257	16.1%	11,245	21.3%
Level 8 Honours/Postgrad cert/dip	1,345	1.4%	693	1.3%
Level 9 Masters	1,094	1.2%	642	1.2%
Level 10 Doctorate	259	0.3%	220	0.4%
Total	94,474	100.0%	52,670	100.0%

Māori participation in tertiary education – 2004

Sub sector

In 2004, there was a decline in Māori students at wānanga, accompanied by a continued increase in students at institutes of technology and polytechnics (ITPs). Student numbers at private training establishments (PTEs) increased after a period of decline. Numbers at universities remained steady.

Maori students in formal tertiary education by subsector 1994-2004



While nearly 40% of Maori students were enrolled in ITPs, they accounted for only a quarter of the EFTS consumed by Māori students. This indicates more part-time/part-year study at ITPs.

Maori students and EFTS in formal tertiary education by subsector 2004

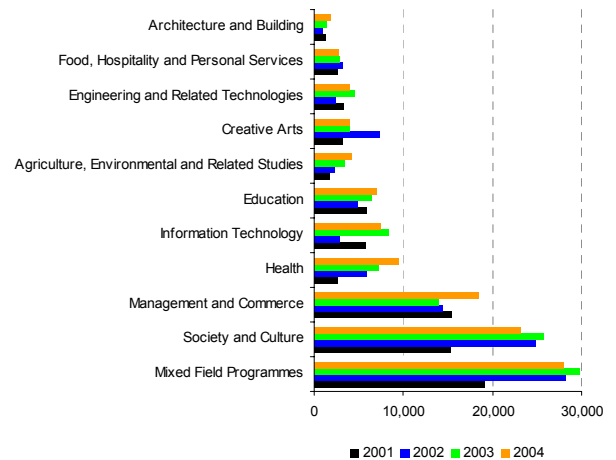
	Students		EFTS	
	Number	Percentage	Number	Percentage
Universities	13,098	14%	9,195	17%
Institutes of technology and polytechnics	36,579	39%	13,751	26%
Colleges of Education	1,777	2%	1,151	2%
Wānanga	33,359	35%	18,885	36%
Private training establishments	19,094	20%	8,880	17%
Other tertiary education providers	1,633	2%	808	2%
Total	94,474	100%	52,670	100%

Field of study

The largest fields of study for Māori students in 2004 were mixed field programmes, society and culture and management and commerce.

There were notable increases in enrolments in management and commerce and health in 2004.

Maori students in formal tertiary education by qualification field of study 1994-2004



While 30% of Māori students were enrolled in mixed-field programmes in 2004, enrolments in this field accounted for only 16% of EFTS consumed by Māori students. Again, this reflects that many of these qualifications require less than a year's study.

Maori students and EFTS in formal tertiary education by qualification field of study 2004

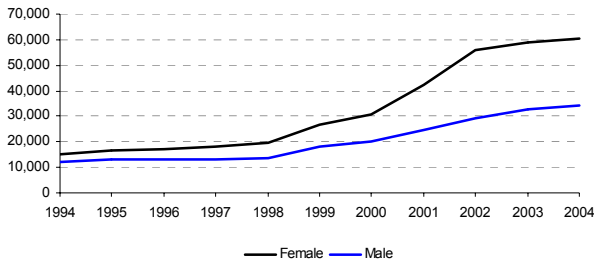
	Students		EFTS	
	Number	Percentage	Number	Percentage
Mixed Field Programmes	27,965	30%	8,611	16%
Society and Culture	23,165	25%	16,432	31%
Management and Commerce	18,514	20%	7,949	15%
Health	9,468	10%	2,513	5%
Information Technology	7,482	8%	2,850	5%
Education	7,019	7%	3,904	7%
Agriculture, Environmental and Related Studies	4,131	4%	1,718	3%
Creative Arts	4,108	4%	3,191	6%
Engineering and Related Technologies	4,033	4%	1,830	3%
Food, Hospitality and Personal Services	2,711	3%	1,597	3%
Architecture and Building	1,867	2%	1,072	2%
Natural and Physical Sciences	1,575	2%	1,004	2%
Total	94,474	100%	52,670	100%

Māori participation in tertiary education – 2004

Gender and age

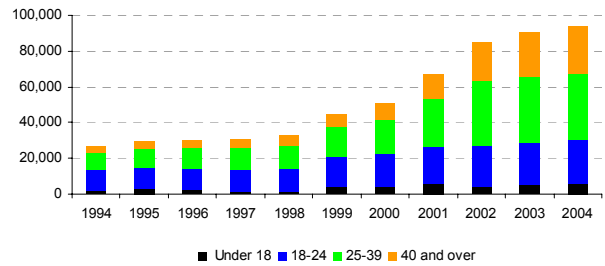
In 2004, 64% of Maori students were women. However, the number of Maori men increased by 5% from 2003 to 2004, compared with only 2% growth for Maori women.

Maori students in formal tertiary education by gender 1994-2004



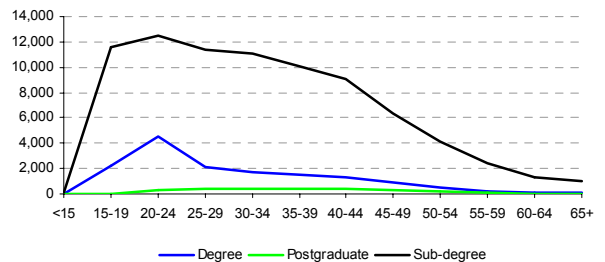
The growth in Maori enrolments over the last few years has been mostly in those aged 25 and over. From 2003 to 2004, the main growth was in those aged 40 and over.

Maori students in formal tertiary education by age group 1994-2004



Most of the participation by Maori aged 25 and over tends to be in sub-degree qualifications.

Maori students in formal tertiary education by qualification level and age 2004



Notes

1. Data before 1999 excludes private training establishments and other tertiary education providers.
2. Data relates to domestic students enrolled at any time during the year with a tertiary education provider in formal qualifications of greater than 0.03 EFTS.
3. Data excludes all non-formal learning and formal learning through on-job industry training and private training establishments which neither received tuition subsidies nor were approved for student loans and/or allowances.
4. Students who studied at more than one qualification level, or in more than one subsector or more than one field of study have been counted in each level, subsector or field of study.
5. Participation rate is the percentage of the population aged 15 and over who were enrolled at any time during the year. These rates have been adjusted to correct for the differing age distribution of each group over time.

Tertiary Sector Performance Analysis & Reporting,
Tertiary Curriculum, Teaching and Learning Group – Mātauranga Tuatoru, Akoranga Māautanga,
Ministry of Education – Te Tāhuhu o te Mātauranga.

Copyright © Ministry of Education, 2005 (All rights reserved)

This fact sheet is available from the Ministry of Education website: <http://www.minedu.govt.nz/goto/tertiaryanalysis>