

# Pasifika peoples in tertiary education in New Zealand

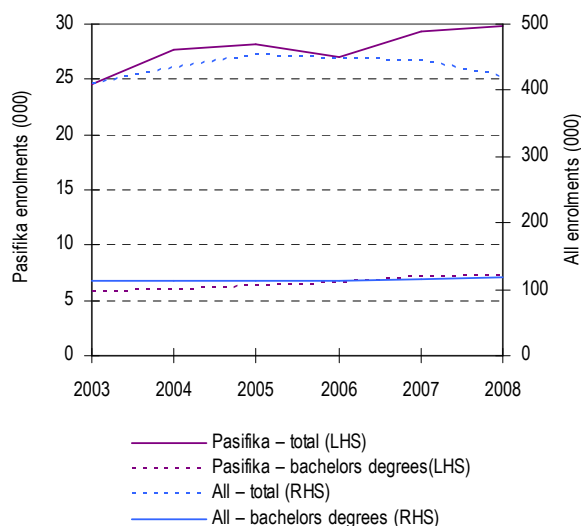
In 2008, there were 29,800 enrolments by domestic Pasifika students in formal tertiary qualifications, up 1.8 percent on 2007. The amount of study, as measured in equivalent full-time student units, also increased in 2008 (up by 2.2 percent).

At every qualification level except certificates 1 to 3, Pasifika enrolments were higher in 2008 than in 2007. Level 4 certificate enrolments rose by 8.5 percent, honours and postgraduate certificates and diplomas by 7.2 percent, masters degrees by 5.2 percent, bachelors-level enrolments were up 3.7 percent and doctoral enrolments were 3.4 percent higher in 2008 than in 2007. The smallest increase in enrolments in 2008 was for level 5 to 7 diplomas (up 2.0 percent). In comparison, the total number of domestic enrolments fell from 2007 to 2008, due mainly to a significant decrease in non-degree certificate enrolments. The falls in level 1 to 3 certificate enrolments in 2008 were 12 percent for all domestic students and 1.1 percent for domestic Pasifika students.

The amount of study undertaken by Pasifika students, in terms of equivalent full-time student units, increased in 2008 at every qualification level other than for level 5 to 7 diplomas.

In 2008, 45 percent of Pasifika students were Samoan, 20 percent Cook Island, 18 percent Tongan, 11 percent Fijian, 7 percent Niuean and 2 percent Tokelauan.

Figure 1: Domestic Pasifika students in provider-based formal tertiary education compared with all domestic students



## About the data used in this fact-sheet:

The information presented here refers to New Zealand's domestic Pasifika students enrolled in provider-based formal qualifications of more than one week's duration, unless otherwise stated.

Cook Islanders, Niueans and Tokelauans are grouped with domestic Pasifika students, whether or not they are resident in New Zealand or not. Fijian, Tongan and Samoan students who are not New Zealand residents are classed as international students.

The data in this factsheet is from the tertiary education enrolments collection provided to the Ministry of Education by tertiary education providers. In 2000, the data collection was extended to record multiple ethnicities. Before this, the number of Pasifika students was understated. Up to 3 ethnicities are now collected and students are counted in each group.

Students may be enrolled with a tertiary education provider at any time during the year.

From 1999 onwards, information for private training establishments has been included in the statistical collections. Private providers are included if they receive government enrolments-based funding or if their students were eligible to apply for loans or allowances.

The equivalent full-time student (EFTS) unit referred to in this factsheet is a measure or 'size' of each student's enrolment. One equivalent full-time student unit represents the load taken by a student enrolled full-time for one year. Part-time study years are expressed as proportions of an EFTS, for example, 0.75 EFTS. The equivalent full-time student count is the sum of the EFTS units for a year.

The equivalent full-time student count used in this fact-sheet does not equate to the count of student achievement component-funded learners.

For a fact-sheet on Pasifika tertiary education students by ethnicity go to Education Counts: [www.educationcounts.govt.nz/publications](http://www.educationcounts.govt.nz/publications)

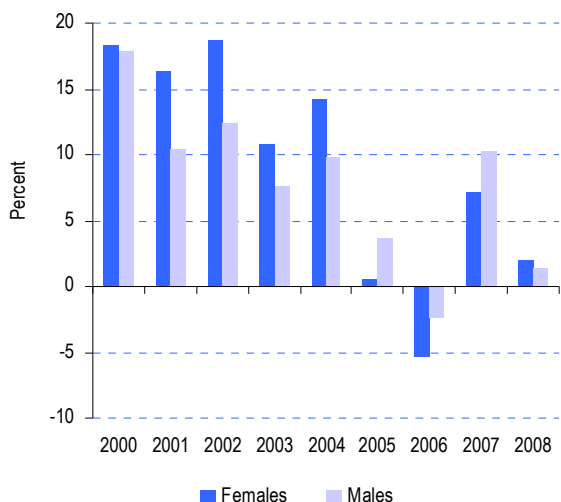
Of Pasifika peoples aged 15 years and over, 11.8 percent participated in formal tertiary education in 2008. This compared with a participation rate of 11.4 percent for European students, 16.9 percent for Māori and 12.4 percent for Asians.

### Enrolments by gender

In 2008, there were more female than male students – 17,500 compared to 12,300.

In 2008, the number of male Pasifika students increased by 1.5 percent, compared to an increase of 2.0 percent for females. In 2005 and 2007 enrolments by Pasifika males increased more strongly than for females. Also, when Pasifika student numbers decreased in 2007 as a result of changes in government policy relating to lower-level tertiary qualifications, the fall in the numbers was stronger for women than for men (down 5.5 percent compared to 2.4 percent).

Figure 2: Annual percentage change in the number of Pasifika enrolments by gender



### Younger Pasifika students (based on equivalent full-time student units)

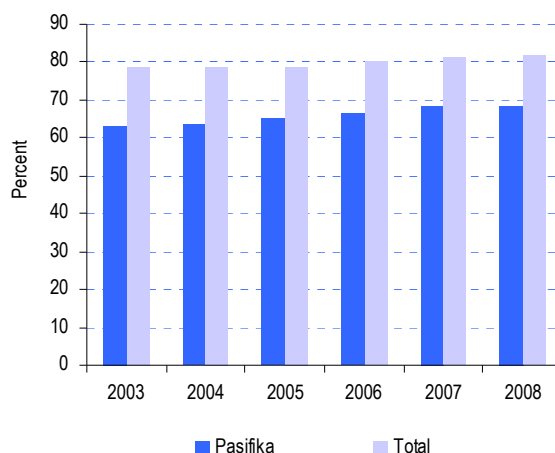
From 2007 to 2008, there was a slight decrease in the proportion of Pasifika students aged under 25 years studying qualifications at level 4 and above – 68 percent of Pasifika equivalent full-time student units in 2008, compared to 69 percent in 2007. Before this the proportion of Pasifika under-25-year-olds in qualifications at level 4 and above had been increasing.

The number of enrolments by Pasifika students aged under 25 years enrolled in qualifications at level 4 and above, has risen more strongly in recent years than for domestic students overall. Pasifika enrolments by under-25-year-olds increased by 5.0 percent, on average, over

the last five years while for all domestic students, the comparable increase was 1.9 percent.

These increases have led to the narrowing of the gap between the proportions of Pasifika and all domestic under-25-year-olds in level 4 qualifications. In 2008, the Pasifika proportion was 13 percentage points lower, compared to 20 percentage points lower in the late 1990s.

Figure 3: Proportion of under-25-year-olds enrolled in qualifications at level 4 and above



Note: Figure 3 is based on equivalent full-time student units.

Overall, the proportion of young domestic students in qualifications at level 4 and above remained relatively stable from 2000 to 2005 in terms of the number of equivalent full-time student units. This was at a time when New Zealand's unemployment rate tracked downwards resulting in some young people entering employment rather than study. Since 2006, the overall proportion of domestic students aged under 25 years in qualifications at level 4 and above has slowly increased. This trend may have been influenced by the increases in youth unemployment that became visible in 2007.

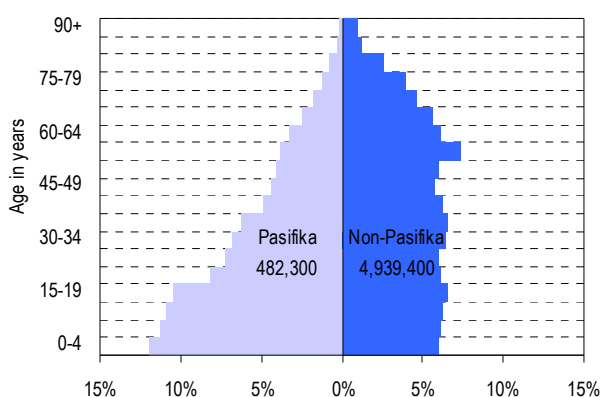
Participation in non-degree study by Pasifika under-25-year-olds shows that, although enrolments in lower-level certificates peaked in 2005, as a proportion of the total, lower-level certificate enrolments decreased over the last five years from 37 percent in 2003 to 32 percent in 2008.

## Pasifika population continues to become younger

Mirroring the Pasifika population as a whole, the Pasifika student population was younger in 2008 than New Zealand's total student population. Forty-six percent of Pasifika students were under 25 years, compared to 41 percent of all domestic students. The situation was reversed for those aged 40 years and over. Close to one in three in the total student population fell into this age group in 2008, while for Pasifika peoples this was only one in five.

In the 2026 projections of the population (Figure 4) the proportion of Pasifika under-25-year-olds is expected to be 53 percent while for the total New Zealand population the expected proportion is 31 percent. As younger students tend to study with the aim of getting a qualification, it is expected that more Pasifika students will gain qualifications.

Figure 4: Projection of the New Zealand Pasifika population in 2026



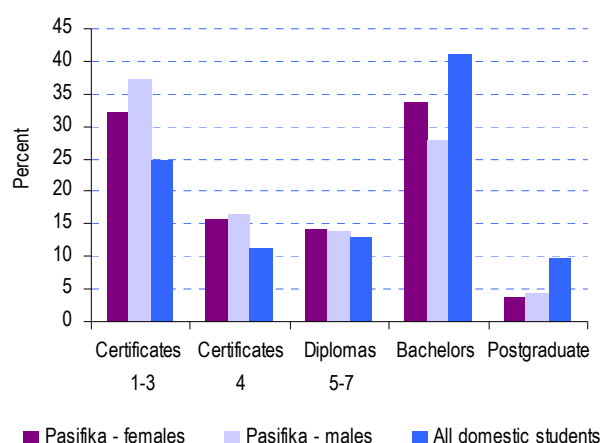
Source: Statistics New Zealand, 2006 Census of Population and Dwellings.

## Pasifika students and qualification levels

Thirty percent of Pasifika students were enrolled in bachelors or higher qualifications in 2008. This compared to 39 percent for all domestic students. Thirty-three percent of female Pasifika students studied bachelors or higher qualifications and 26 percent of male Pasifika students. The comparable figures in 2008 for all domestic students were 44 percent for women and 37 percent for men.

In 2008, 4.0 percent of Pasifika students were enrolled in postgraduate courses (levels 8 to 10). Of all domestic students, just over 9 percent were enrolled at postgraduate level. For Pasifika and all domestic students, there was no difference in 2008 among the genders in the proportions enrolled at postgraduate level.

Figure 5: Equivalent full-time student units in 2008 by qualification level and gender



Compared with total domestic students, there were, proportionately, slightly more Pasifika students studying level 5 to 7 diplomas in 2008. That is, 16 percent of Pasifika students studied at this level compared to 15 percent of all domestic students. There were proportionately, slightly more Pasifika females than males who studied at diploma level in 2008. However, there was a decrease from 2007 to 2008 in the amount of study towards level 5 to 7 diplomas, in terms of equivalent full-time student units, for both domestic Pasifika students and all domestic students.

Pasifika men participated at a higher rate in level 4 certificate study in 2008 than Pasifika women (20 percent compared to 17 percent). Proportionately, there were also more Pasifika men than women who studied towards lower-level certificates in 2008 (47 percent compared to 43 percent). The overall proportion of domestic students enrolled in lower-level certificates was 44 percent of males and 36 percent of females.

## Student allowances and loans

In 2008, 4,490 students in receipt of student allowances identified themselves with the Pasifika ethnic group – up 7.1 percent on the previous year. This compares to an increase of 5.2 percent in the total number of allowances recipients.

In 2008, there were 13,800 Pasifika students who borrowed through the Student Loan Scheme, up 9.3 percent on 2007. More students took up loans in 2008 following the introduction of interest-free student loans in 2006. The overall student loan uptake rate – the proportion of students eligible to borrow who actually do so – was 69 percent in 2008. In 2007, the uptake rate was lower at 66 percent.

Over the period from 2000 to 2007, 7.7 percent of borrowers identified themselves as Pasifika, 12 percent as Asian, 19 percent as Māori and 55 percent as European.

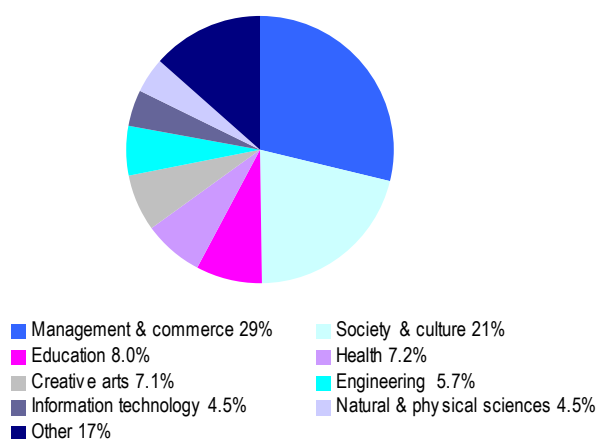
In comparison, the 2008 ethnic breakdown of tertiary education students comprised: 7.1 percent Pasifika, 12 percent Asians, 19 percent Māori and 66 percent of students identified themselves as Europeans.

#### Field of study (based on equivalent full-time student units)

In 2009, the Ministry of Education introduced new field of study information focused on the courses studied by tertiary education students. This new approach aims to strengthen the links between the demand for skills and knowledge from the labour market and their supply by the education sector. Seventy-one fields of study are now available by ethnic group from the Ministry's Education Counts website.

Looking at the broad fields of study, 29 percent of Pasifika students studied in the field of *management and commerce* in 2008, compared to 18 percent of all domestic students. *Society and culture* and *education* attracted 21 percent of Pasifika students and 26 percent of total domestic students in 2008. Slightly more Pasifika students than total domestic students were attracted to the field of *education* (8.0 percent compared to 7.1 percent). Fewer Pasifika students than total domestic students were attracted to the fields of *health* (7.4 percent compared to 9.0 percent) and to the *natural and physical sciences* (4.5 percent compared to 7.1 percent). Pasifika and domestic numbers in the creative arts in 2008 were 7.1 percent and 8.2 percent, respectively.

Figure 6: Pasifika full-time equivalent students in 2008 by broad field of study



#### Pasifika students and industry training

Thirteen percent of Pasifika employees participated in industry training in 2008, down 1.2 percentage points on 2007. Only Māori had a higher participation rate with 17 percent of Māori employees in industry training. Overall, 9.0 percent of employees participated in industry training in 2008.

In 2008, 3.1 percent of modern apprentices identified themselves as Pasifika. As Pasifika made up 9.8 percent of the population aged 15 to 24 years in 2008, this group was under-represented in the Modern Apprenticeship Scheme. Māori were also under-represented among modern apprentices in 2008 as 20 percent were aged 15 to 24 years and 15 percent of apprentices were Māori.

Industry training at the lower qualification levels has decreased in recent years and the proportion of trainees in level 4 and higher qualifications has increased. Ten percent of Pasifika employees trained at level 1 in 2008, compared to 13 percent in 2004. Twenty-seven percent were in level 2 qualifications in 2008, compared to 37 percent in 2004. Similarly, the proportion of trainees in level 3 was 21 percent in 2008, down by 6 percent on the number at that level in 2004. Trainees at level 4 and above accounted for 41 percent of total in 2008. In 2004, this group only comprised 23 percent of all trainees.

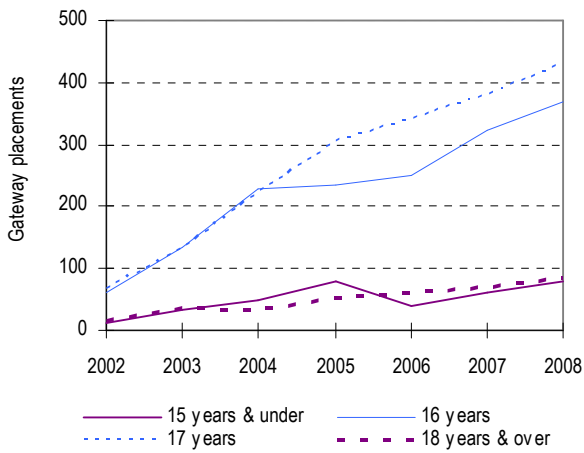
A simple measure of achievement in industry training is to average the number of credits passed across the total number of trainees. Pasifika trainees gained 14 credits, on average, towards national qualifications in 2008, compared to 19 credits per trainee overall. Looking at the achievement of national certificates in 2008, 16 percent of Pasifika trainees achieved a national certificate, compared to 18 percent for trainees overall.

#### Strong growth in Pasifika Gateway placements

Over the last five years, more Pasifika people participated in Gateway – a programme designed to help secondary school students experience tertiary education and achieve outcomes such as gaining employment or achieving credits on the National Qualifications Framework. In 2008, 965 Pasifika learners took part in a Gateway assignment, compared to 337 five years earlier. In 2008, 512 Pasifika women and 453 Pasifika men participated.

In 2008, 709 Pasifika Gateway learners achieved a positive outcome. Sixteen percent started full-time employment, 1.1 percent started part-time employment, 76 percent continued with further training and the remaining Gateway learners had 'other' outcomes.

Figure 7: Pasifika peoples in Gateway



Source: Tertiary Education Commission.

### International students from the Pacific

Enrolments by international Pasifika students increased by 9.3 percent from 2007 to 2008 to 1,690. From 2005 to 2007, international Pasifika enrolments increased by 19 percent, but before this they had declined for three consecutive years.

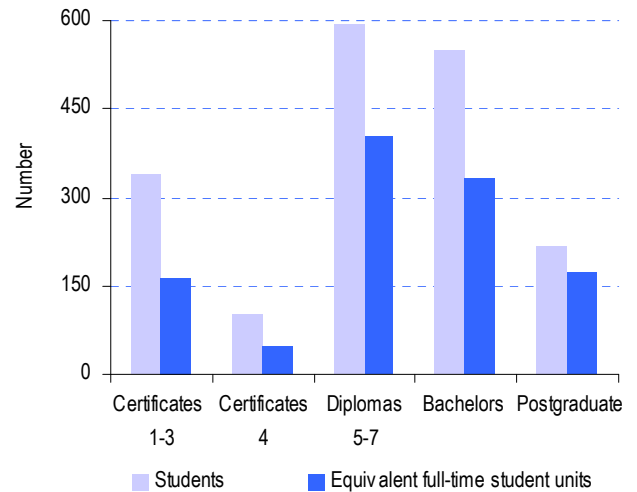
Sixty-six percent of Pasifika international students studied full-time for a full-year in 2008, in terms of equivalent full-time student units.

From 2007 to 2008, international Pasifika enrolments at bachelors-level fell by 3.2 percent to 550 enrolments. However, in terms of equivalent full-time student units, study at this level actually increased by 3.1 percent. In comparison, bachelors-level enrolments increased in 2008 for domestic Pasifika students by 3.7 percent, although the average study load fell in terms of equivalent full-time student units. For all domestic students bachelors-level enrolments increased by 1.7 percent from 2007 to 2008 with students taking on, on average, a higher study load. Before the latest increase, international Pasifika bachelors-level enrolments decreased significantly from 2006 to 2007 both in terms of student numbers and equivalent full-time student units

Over the last five years, international Pasifika students have had similar proportions of women and men. Over this period, women made up 60 percent of domestic Pasifika students and 55 percent of all domestic students.

Thirty percent of international Pasifika students studied in the field of *management and commerce* in 2008 (based on equivalent full-time student units). The comparable figures were – 29 percent for domestic Pasifika students and 26 percent for all domestic students. In 2008, *natural and physical sciences* attracted 6.9 percent of international Pasifika student, 4.5 percent of domestic Pasifika students and 3.1 percent of domestic students overall. Nineteen percent of international Pasifika students studied in the field of *society and culture* and 12 percent studied in the field of *engineering* in 2008.

Figure 8: International students from the Pacific by qualification level



<b>Domestic Pasifika tertiary education students by selected characteristics</b>												
<b>Type of qualification (domestic students)</b>	<b>Student enrolments</b>						<b>Equivalent full-time students</b>					
	1998	2003	2006	2007	2008	Change 07-08	1998	2003	2006	2007	2008	Change 07-08
Students in formal qualifications > 0.03 EFTS <sup>1</sup>	10,067	24,642	27,005	29,274	29,790	1.8%	6,686	15,925	16,726	17,908	18,303	2.2%
Students in formal qualifications < 0.03 EFTS <sup>2</sup>	na	2,637	4,902	4,909	1,613	-67.1%	na	132	217	256	137	-46.3%
Students in informal education programmes <sup>3</sup>	na	10,548	4,914	3,952	3,566	-9.8%	na	879	327	244	207	-15.1%
<b>Domestic Pasifika students enrolled in formal qualifications &gt; 0.03 EFTS<sup>1</sup></b>												
<b>Qualification level</b>												
Certificates 1-3	3,693	11,802	12,446	13,407	13,260	-1.1%	1,866	5,782	5,763	6,112	6,286	2.8%
Certificates 4	453	4,225	4,629	5,123	5,557	8.5%	159	2,482	2,588	2,813	2,947	4.8%
Diplomas 5-7	1,975	3,896	4,234	4,611	4,702	2.0%	1,256	2,452	2,518	2,653	2,581	-2.7%
Bachelors	3,877	6,197	6,874	7,442	7,716	3.7%	3,061	4,717	5,214	5,653	5,749	1.7%
Honours and postgraduate cert./dip.	214	381	617	669	717	7.2%	144	237	350	363	410	12.9%
Masters	216	338	335	343	361	5.2%	164	194	184	202	207	2.5%
Doctorates	38	77	109	118	122	3.4%	37	61	109	113	122	8.1%
<b>Age group</b>												
Under 18 years	280	1,332	1,543	1,595	1,562	-2.1%	192	909	1,045	986	966	-2.1%
18 to 19 years	1,632	3,541	4,205	4,682	4,973	6.2%	1,331	2,859	3,441	3,776	4,039	7.0%
20 to 24 years	3,227	6,298	6,572	6,889	7,146	3.7%	2,490	4,537	4,690	4,921	5,015	1.9%
25 to 39 years	3,685	9,341	9,459	10,025	9,917	-1.1%	2,059	5,310	4,991	5,274	5,239	-0.7%
40 years and over	1,238	4,130	5,226	6,083	6,192	1.8%	611	2,309	2,558	2,951	3,044	3.1%
<b>Common broad fields of study</b>												
Agriculture, environmental and related studies	132	493	669	707	684	-3.3%	73	170	181	178	187	4.8%
Architecture and building	292	1,112	1,203	1,112	1,303	17.2%	148	439	593	582	657	12.9%
Creative arts	315	3,371	3,340	3,594	3,694	2.8%	270	1,232	1,176	1,261	1,302	3.3%
Education	980	3,143	2,645	2,990	2,965	-0.8%	707	1,496	1,443	1,509	1,466	-2.8%
Engineering and related technologies	1,025	2,114	2,362	2,824	2,762	-2.2%	517	899	911	970	1,042	7.3%
Food, hospitality and personal services	255	1,059	1,322	1,427	1,401	-1.8%	137	516	671	753	753	0.0%
Health	411	3,007	3,601	3,682	3,683	0.0%	290	854	1,129	1,238	1,319	6.5%
Information technology	419	3,782	3,544	3,765	3,767	0.1%	237	869	833	864	817	-5.5%
Management and commerce	2,687	10,742	10,710	12,021	12,605	4.9%	1,569	3,588	4,458	5,008	5,284	5.5%
Mixed field programmes	972	7,262	4,372	4,163	4,366	4.9%	525	1,395	985	856	851	-0.6%
Natural and physical sciences	564	2,326	2,589	2,789	2,700	-3.2%	421	663	780	837	817	-2.4%
Society and culture	2,412	9,199	8,687	9,189	8,981	-2.3%	1,793	3,804	3,572	3,852	3,808	-1.1%
<b>Sub-sector</b>												
Universities	3,363	6,535	8,123	8,612	8,655	0.5%	2,740	4,910	6,099	6,460	6,498	0.6%
Institutes of technology and polytechnics	6,051	8,026	9,838	11,170	10,919	-2.2%	3,374	4,102	4,458	4,898	4,790	-2.2%
Colleges of education	699	1,102	135				486	737	77			
Wānanga	117	3,919	2,494	2,856	3,216	12.6%	85	2,356	1,280	1,513	1,760	16.3%
Public providers	10,067	18,881	20,152	22,128	22,292	0.7%	6,686	12,105	11,913	12,871	13,048	1.4%
Private training establishments	na	6,518	7,571	7,878	8,199	4.1%	na	3,820	4,813	5,038	5,254	4.3%
<b>Study type</b>												
Full-time full-year	4,560	9,615	9,956	10,596	10,641	0.4%	4,679	10,113	10,312	11,021	11,040	0.2%
Full-time part-year	1,516	4,635	5,143	5,391	5,142	-4.6%	823	2,532	2,649	2,750	2,703	-1.7%
Part-time full-year	2,416	4,516	5,092	5,140	5,426	5.6%	912	1,915	2,261	2,294	2,410	5.1%
Part-time part-year	1,575	5,876	6,814	8,147	8,581	5.3%	272	1,365	1,504	1,844	2,149	16.6%
<b>Female / Male</b>												
Female	5,426	14,744	16,014	17,157	17,497	2.0%	3,716	9,573	10,206	10,952	11,106	1.4%
Male	4,641	9,898	10,991	12,117	12,293	1.5%	2,969	6,352	6,520	6,956	7,196	3.5%
<b>Gaining qualifications and age-standardised participation rate</b>												
Number of students who completed a qualification	2,100	5,369	6,443	na	8,197							
Number of qualifications completed	2,016	5,015	5,935	na	7,579							
Pasifika students participation rate	na	11.2%	11.2%	11.9%	11.8%							
All students participation rate	8.4%	12.8%	13.5%	13.3%	12.5%							

<sup>1</sup> Students enrolled at any time during the year with a tertiary education provider in formal qualifications of greater than 0.03 EFTS (more than one week's duration).

<sup>2</sup> Students enrolled at any time during the year with a tertiary education provider in formal qualifications of less than 0.03 EFTS (less than one week's duration).

<sup>3</sup> Students enrolled at any time during the year with a tertiary education provider in informal programmes, i.e. programmes not registered on the New Zealand Register of Quality Assured Qualifications.

Notes:

(1) The equivalent full-time student count used in this report does not equate to the funded equivalent full-time student count. The data is also not adjusted to allow for students who do not complete their study programme.

(2) The colleges of education have merged with nearby universities over the last decade.

(3) From 2003, the field of study data is based on courses studied. The 1998 data is based on qualifications and is therefore not directly comparable.

<b>Domestic female Pasifika tertiary education students by selected characteristics</b>												
	<b>Student enrolments</b>						<b>Equivalent full-time students</b>					
	1998	2003	2006	2007	2008	Change 07-08	1998	2003	2006	2007	2008	Change 07-08
<b>Type of qualification (domestic students)</b>												
Students in formal qualifications > 0.03 EFTS <sup>1</sup>	5,426	14,744	16,014	17,157	17,497	2.0%	3,716	9,573	10,206	10,952	11,106	1.4%
Students in formal qualifications < 0.03 EFTS <sup>2</sup>	na	1,469	1,137	1,114	789	-29.2%	na	68	88	118	83	-29.6%
Students in informal education programmes <sup>3</sup>	na	4,931	3,003	2,370	2,093	-11.7%	na	534	197	154	126	-17.9%
Domestic female Pasifika students enrolled in formal qualifications > 0.03 EFTS <sup>1</sup>												
<b>Qualification level</b>												
Certificates 1-3	1,796	7,006	7,118	7,433	7,498	0.9%	918	3,353	3,347	3,532	3,600	1.9%
Certificates 4	182	2,658	2,753	2,992	3,091	3.3%	61	1,619	1,598	1,745	1,746	0.0%
Diplomas 5-7	1,115	2,257	2,591	2,810	2,865	2.0%	753	1,409	1,556	1,634	1,589	-2.7%
Bachelors	2,296	3,844	4,340	4,800	5,077	5.6%	1,793	2,905	3,320	3,640	3,756	3.2%
Honours and postgraduate cert./dip.	113	212	399	434	434	0.0%	76	126	206	217	220	1.6%
Masters	131	220	207	201	205	2.0%	99	126	113	117	123	4.5%
Doctorates	16	46	63	70	69	-1.4%	15	35	66	67	73	8.2%
<b>Age group</b>												
Under 18 years	99	679	840	845	791	-6.4%	69	450	575	540	529	-2.0%
18 to 19 years	907	2,087	2,438	2,776	2,931	5.6%	768	1,698	2,031	2,297	2,439	6.2%
20 to 24 years	1,703	3,711	3,883	4,006	4,117	2.8%	1,355	2,667	2,822	2,921	2,935	0.5%
25 to 39 years	1,967	5,632	5,620	5,896	5,866	-0.5%	1,145	3,227	3,078	3,276	3,231	-1.4%
40 years and over	747	2,635	3,233	3,634	3,792	4.3%	378	1,532	1,700	1,919	1,972	2.8%
<b>Common fields of study</b>												
Agriculture, environmental and related studies	40	132	190	184	184	0.0%	26	36	49	46	53	15.1%
Architecture and building	21	190	235	163	141	-13.5%	15	49	59	52	55	6.3%
Creative arts	146	1,746	1,938	2,148	2,124	-1.1%	126	629	624	713	717	0.5%
Education	802	2,141	2,101	2,308	2,257	-2.2%	584	1,207	1,222	1,257	1,195	-4.9%
Engineering and related technologies	80	373	436	544	530	-2.6%	54	142	151	178	177	-0.8%
Food, hospitality and personal services	137	701	967	1,033	1,011	-2.1%	71	361	487	535	551	2.9%
Health	333	1,560	2,112	2,123	2,087	-1.7%	230	596	792	855	919	7.5%
Information technology	199	1,945	2,070	2,115	2,152	1.7%	108	377	400	404	394	-2.5%
Management and commerce	1,615	6,295	7,167	8,065	8,430	4.5%	954	2,523	3,145	3,551	3,687	3.8%
Mixed field programmes	491	3,760	3,017	2,764	2,871	3.9%	256	947	611	522	519	-0.5%
Natural and physical sciences	268	1,218	1,450	1,562	1,490	-4.6%	200	371	462	501	482	-3.9%
Society and culture	1,505	5,241	5,457	5,655	5,586	-1.2%	1,093	2,336	2,208	2,339	2,358	0.8%
<b>Sub-sector</b>												
Universities	1,881	3,933	5,163	5,493	5,526	0.6%	1,524	2,948	3,910	4,108	4,154	1.1%
Institutes of technology and polytechnics	3,045	4,241	4,892	5,464	5,258	-3.8%	1,769	2,112	2,245	2,510	2,331	-7.1%
Colleges of education	567	864	104				397	581	61			
Wānanga	39	2,679	1,703	1,858	2,136	15.0%	26	1,592	878	1,026	1,170	14.0%
Public providers	5,426	11,226	11,584	12,473	12,600	1.0%	3,716	7,233	7,095	7,644	7,656	0.2%
Private training establishments	na	4,024	4,923	5,167	5,347	3.5%	na	2,340	3,112	3,308	3,451	4.3%
<b>Study type</b>												
Full-time full-year	2,623	5,685	6,109	6,564	6,518	-0.7%	2,702	6,032	6,353	6,861	6,793	-1.0%
Full-time part-year	675	2,599	2,858	2,894	2,824	-2.4%	370	1,446	1,554	1,559	1,570	0.7%
Part-time full-year	1,344	2,827	3,142	3,136	3,229	3.0%	512	1,231	1,410	1,440	1,471	2.1%
Part-time part-year	784	3,633	3,905	4,563	4,926	8.0%	132	864	889	1,092	1,272	16.5%
<b>Gaining qualifications and age-standardised participation rate</b>												
Number of students who completed a qualification	1,191	3,305	3,841	na	4,871							
Number of qualifications completed	1,250	3,563	4,203	na	5,276							
<sup>1</sup> Students enrolled at any time during the year with a tertiary education provider in formal qualifications of greater than 0.03 EFTS (more than one week's duration). <sup>2</sup> Students enrolled at any time during the year with a tertiary education provider in formal qualifications of less than 0.03 EFTS (less than one week's duration). <sup>3</sup> Students enrolled at any time during the year with a tertiary education provider in informal programmes, i.e. programmes not registered on the New Zealand Register of Quality Assured Qualifications.												
Notes:												
(1) The equivalent full-time student count used in this report does not equate to the funded equivalent full-time student count. The data is also not adjusted to allow for students who do not complete their study programme.												
(2) The colleges of education have merged with nearby universities over the last decade.												
(3) From 2003, the field of study data is based on courses studied. The 1998 data is based on qualifications and is therefore not directly comparable.												

## Domestic male Pasifika tertiary education students by selected characteristics

Type of qualification (domestic students)	Student enrolments						Equivalent full-time students					
	1998	2003	2006	2007	2008	Change 07-08	1998	2003	2006	2007	2008	Change 07-08
Students in formal qualifications > 0.03 EFTS <sup>1</sup>	4,641	9,898	10,991	12,117	12,293	1.5%	2,970	6,352	6,520	6,956	7,196	3.5%
Students in formal qualifications < 0.03 EFTS <sup>2</sup>	na	1,168	3,765	3,795	824	-78.3%	na	64	129	138	55	-60.5%
Students in informal education programmes <sup>3</sup>	na	5,617	1,911	1,582	1,473	-6.9%	na	345	129	90	81	-10.2%
Domestic male students enrolled in formal qualifications > 0.03 EFTS <sup>1</sup>												
<b>Qualification level</b>												
Certificates 1-3	1,897	4,796	5,328	5,974	5,762	-3.5%	947	2,429	2,417	2,579	2,686	4.1%
Certificates 4	271	1,567	1,876	2,131	2,466	15.7%	98	863	989	1,068	1,202	12.5%
Diplomas 5-7	860	1,639	1,643	1,801	1,837	2.0%	502	1,042	962	1,019	992	-2.7%
Bachelors	1,581	2,353	2,534	2,642	2,639	0.2%	1,268	1,812	1,894	2,013	1,993	-1.0%
Honours and postgraduate cert./dip.	101	169	218	235	283	20.4%	68	111	144	146	190	29.6%
Masters	85	118	128	142	156	9.9%	65	68	71	85	85	-0.4%
Doctorates	22	31	46	48	53	10.4%	22	27	43	46	49	7.9%
<b>Age group</b>												
Under 18 years	181	653	703	750	771	2.8%	123	459	470	446	436	-2.2%
18 to 19 years	725	1,454	1,767	1,906	2,042	7.1%	564	1,161	1,411	1,479	1,600	8.2%
20 to 24 years	1,524	2,587	2,689	2,883	3,029	5.1%	1,135	1,871	1,868	2,000	2,080	4.0%
25 to 39 years	1,718	3,709	3,839	4,129	4,051	-1.9%	914	2,083	1,913	1,998	2,008	0.5%
40 years and over	491	1,495	1,993	2,449	2,400	-2.0%	232	777	858	1,033	1,072	3.8%
<b>Common fields of study</b>												
Agriculture, environmental and related studies	92	361	479	523	500	-4.4%	47	134	133	132	134	1.2%
Architecture and building	271	922	968	949	1,162	22.4%	133	390	534	530	602	13.6%
Creative arts	169	1,625	1,402	1,446	1,570	8.6%	144	603	552	548	585	6.8%
Education	178	1,002	544	682	708	3.8%	123	289	221	252	271	7.6%
Engineering and related technologies	945	1,741	1,926	2,280	2,232	-2.1%	462	757	760	792	865	9.2%
Food, hospitality and personal services	118	358	355	394	390	-1.0%	66	154	185	218	202	-7.4%
Health	78	1,447	1,489	1,559	1,596	2.4%	60	259	338	383	400	4.4%
Information technology	220	1,837	1,474	1,650	1,615	-2.1%	129	492	433	460	423	-8.1%
Management and commerce	1,072	4,447	3,543	3,956	4,175	5.5%	615	1,066	1,313	1,457	1,597	9.6%
Mixed field programmes	481	3,502	1,355	1,399	1,495	6.9%	269	448	374	334	332	-0.7%
Natural and physical sciences	296	1,108	1,139	1,227	1,210	-1.4%	221	292	318	336	336	-0.1%
Society and culture	907	3,958	3,230	3,534	3,395	-3.9%	700	1,467	1,363	1,513	1,450	-4.2%
<b>Sub-sector</b>												
Universities	1,482	2,602	2,960	3,119	3,129	0.3%	1,216	1,962	2,188	2,352	2,344	-0.3%
Institutes of technology and polytechnics	3,006	3,785	4,946	5,706	5,661	-0.8%	1,605	1,990	2,212	2,388	2,459	3.0%
Colleges of education	132	238	31	0	0		90	156	16	0	0	
Wānanga	78	1,240	791	998	1,080	8.2%	59	765	402	487	590	21.1%
Public providers	4,641	7,655	8,568	9,655	9,692	0.4%	2,969	4,872	4,818	5,227	5,393	3.2%
Private training establishments	na	2,494	2,648	2,711	2,852	5.2%	na	1,480	1,702	1,729	1,803	4.3%
<b>Study type</b>												
Full-time full-year	1,937	3,930	3,847	4,032	4,123	2.3%	1,977	4,081	3,959	4,159	4,247	2.1%
Full-time part-year	841	2,036	2,285	2,497	2,318	-7.2%	453	1,085	1,094	1,191	1,133	-4.9%
Part-time full-year	1,072	1,689	1,950	2,004	2,197	9.6%	400	684	851	853	939	10.1%
Part-time part-year	791	2,243	2,909	3,584	3,655	2.0%	140	501	615	752	877	16.6%
<b>Gaining qualifications and age-standardised participation rate</b>												
Number of students who completed a qualification	909	2,064	2,602	na	3,326							
Number of qualifications completed	766	1,452	1,732	na	2,303							

<sup>1</sup> Students enrolled at any time during the year with a tertiary education provider in formal qualifications of greater than 0.03 EFTS (more than one week's duration).

<sup>2</sup> Students enrolled at any time during the year with a tertiary education provider in formal qualifications of less than 0.03 EFTS (less than one week's duration).

<sup>3</sup> Students enrolled at any time during the year with a tertiary education provider in informal programmes, i.e. programmes not registered on the New Zealand Register of Quality Assured Qualifications.

Notes:

(1) The equivalent full-time student count used in this report does not equate to the funded equivalent full-time student count. The data is also not adjusted to allow for students who do not complete their study programme.

(2) The colleges of education have merged with nearby universities over the last decade.

(3) From 2003, the field of study data is based on courses studied. The 1998 data is based on qualifications and is therefore not directly comparable.

<b>International Pasifika tertiary education students by selected characteristics</b>										
<b>Type of qualification</b>	<b>Student enrolments</b>					<b>Equivalent full-time students</b>				
	2003	2006	2007	2008	Change 07-08	2003	2006	2007	2008	Change 07-08
Students in formal qualifications > 0.03 EFTS <sup>1</sup>	1,436	1,600	1,544	1,687	9.3%	1,027	1,066	999	1,123	12.4%
Students in formal qualifications < 0.03 EFTS <sup>2</sup>	47	23	30	30	0.0%	1	1	1	1	-6.4%
Students in informal education programmes <sup>3</sup>	79	243	152	179	17.8%	5	41	12	10	-21.6%
<b>International Pasifika students enrolled in formal qualifications &gt; 0.03 EFTS<sup>1</sup></b>										
<b>Qualification level</b>										
Certificates 1-3	231	220	231	339	46.8%	102	98	103	163	58.6%
Certificates 4	69	116	96	103	7.3%	35	54	54	47	-12.6%
Diplomas 5-7	450	486	520	593	14.0%	299	326	351	405	15.2%
Bachelors	665	632	568	550	-3.2%	504	413	323	333	3.1%
Honours and postgraduate cert./dip.	55	96	73	84	15.1%	41	60	51	64	26.8%
Masters	41	93	104	103	-1.0%	26	76	91	75	-17.6%
Doctorates	20	52	27	36	33.3%	19	41	25	35	36.9%
<b>Age group</b>										
Under 18 years	21	27	22	30	36.4%	17	23	18	24	35.8%
18 to 19 years	206	233	216	269	24.5%	186	197	179	218	22.1%
20 to 24 years	583	591	556	615	10.6%	473	450	424	463	9.1%
25 to 39 years	472	534	519	563	8.5%	286	302	282	325	15.6%
40 years and over	154	215	231	210	-9.1%	65	95	96	92	-4.4%
<b>Common fields of study</b>										
Agriculture, environmental and related studies	38	113	56	63	12.5%	17	38	24	26	5.9%
Architecture and building	56	46	28	34	21.4%	26	20	13	16	23.2%
Creative arts	187	207	151	150	-0.7%	40	40	40	40	0.7%
Education	75	79	68	75	10.3%	49	58	57	60	4.8%
Engineering and related technologies	272	293	289	307	6.2%	121	112	127	129	2.1%
Food, hospitality and personal services	24	52	45	78	73.3%	10	21	25	35	39.7%
Health	100	120	135	146	8.1%	50	43	57	58	0.9%
Information technology	305	228	189	231	22.2%	118	92	95	116	22.1%
Management and commerce	593	715	644	676	5.0%	289	322	287	340	18.7%
Mixed field programmes	73	76	53	57	7.5%	9	15	7	8	19.5%
Natural and physical sciences	250	254	176	209	18.8%	103	94	70	77	9.5%
Society and culture	579	666	572	602	5.2%	196	213	197	218	10.9%
<b>Sub-sector</b>										
Universities	557	681	489	512	4.7%	481	533	399	411	2.9%
Institutes of technology and polytechnics	675	738	797	867	8.8%	413	403	418	488	16.8%
Colleges of education	26	13				15	10			
Wānanga	0	0	0	0		0	0	0	0	
Public providers	1,253	1,429	1,285	1,376	7.1%	909	947	817	899	10.0%
Private training establishments	188	172	260	314	20.8%	117	120	182	224	23.2%
<b>Study type</b>										
Full-time full-year	766	754	679	738	8.7%	793	777	694	748	7.8%
Full-time part-year	226	336	250	269	7.6%	95	133	118	130	10.0%
Part-time full-year	203	186	229	321	40.2%	86	86	108	150	38.9%
Part-time part-year	241	324	386	359	-7.0%	53	71	79	95	20.5%
<b>Female / Male</b>										
Female	705	773	734	841	14.6%	509	547	490	581	18.6%
Male	731	827	810	846	4.4%	517	520	508	542	6.5%
<b>Gaining qualifications and age-standardised participation rate</b>										
No. of students who completed a qualification	319	352	na	563						
Number of qualifications completed	333	366	na	588						

<sup>1</sup> Students enrolled at any time during the year with a tertiary education provider in formal qualifications of greater than 0.03 EFTS (more than one week's duration).

<sup>2</sup> Students enrolled at any time during the year with a tertiary education provider in formal qualifications of less than 0.03 EFTS (less than one week's duration).

<sup>3</sup> Students enrolled at any time during the year with a tertiary education provider in informal programmes, i.e. programmes not registered on the New Zealand Register of Quality Assured Qualifications.

Notes:

(1) The data is also not adjusted to allow for students who do not complete their study programme.

(2) The colleges of education have merged with nearby universities over the last decade.

(3) From 2003, the field of study data is based on courses studied. The 1998 data is based on qualifications and is therefore not directly comparable.