



Central Forecasting and Modelling Unit

Quarterly Migration Report

September 2007 Quarter

Michael Chang

November 2007

Data Source – Statistics New Zealand

Introduction

The focus on migration impacts has often centred on foreign fee-paying (FFP) students and New Zealand's export education sector. However, the education sector is affected not only by FFP students but also migrant children who arrive with their parents and receive education in New Zealand schools.

This document is one of a series of quarterly reports intended to give an update on actual external migration statistics for children, based on data provided by Statistics New Zealand (SNZ). This report comments on the emerging trends and the potential impact they have on schools.

External migration statistics refer to long-term movements of overseas migrants and New Zealand residents into and out of New Zealand¹. This information is captured by the New Zealand passenger arrival and departure cards, and is available from SNZ on a monthly basis.

This document is set out in three parts:

- Actual migration for the September 2007 quarter
- Arrivals, departures and net migration for the year-to-date
- Implications for school enrolments

See Appendix 1 for definitions of the terms used in this report.

The next Quarterly Migration Report will be available in February 2008.

¹ In this report all arrivals and departures discussed are Permanent and Long-Term (PLT).

Overall Summary of Recent Trends in Migration

- In the year to September 2007, there has been a net inflow of 3,100 pre-school-age and school-age migrants (0 to 17 year-olds) into NZ – approximately 1,400 fewer than the previous year. This decrease is predominantly due to a higher level of departures (1,700 more) which exceeds the increase in the number of arrivals (300 more).
- The level of net inflow in the year to September 2007 is considerably lower than the long-term average of 5,500.
- SNZ is expecting a higher level of net inflow of school-age migrants in 2008 compared to its projection for 2007². However, actual number of year-to-date school-age migrants was below SNZ's most recent migration projection.
- The latest National School Roll Projections assumed around 3,800 net PLT school-age migrants for the 2008 schooling year. This level of school-age migrants translates into around 3,000 enrolments in NZ schools in 2008, with an additional 1,200 new entrants expected to enrol resulting from the arrivals of 0 to 4 year-olds during previous years.

² Based on the most recent migration projection provided by SNZ in July 2006.

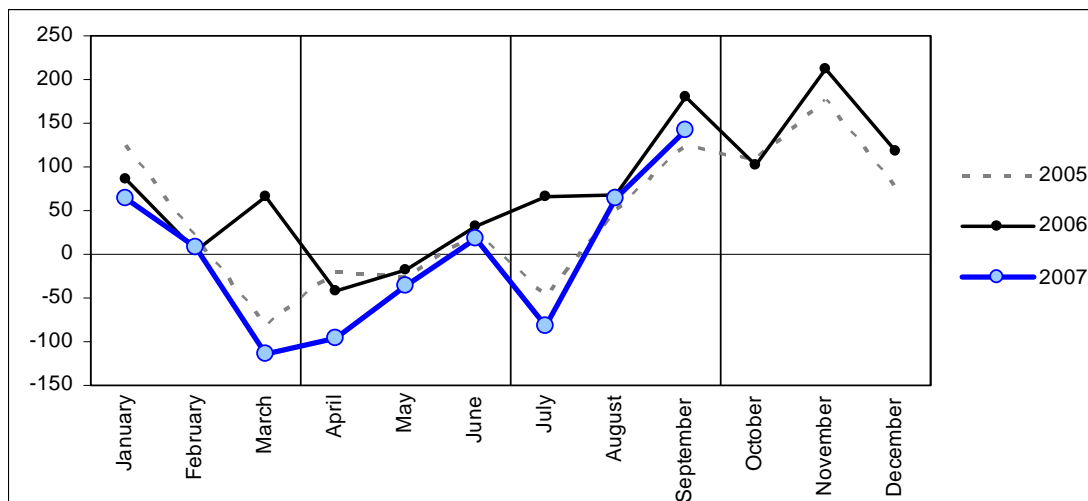
PART 1: School-Age Migration for the September Quarter

As shown in the graphs below, net PLT migration of secondary school-age children (Figure 3) in the September 2007 quarter has tracked September 2006 quarter very closely, while net PLT numbers of pre-school-age (Figure 1) and primary school-age children (Figure 2) have declined compared to the same quarter in the previous year.

Pre-School PLT Migration

For the quarter ended September 2007, net PLT migration of pre-school-age children (0 to 4 year-olds) was 126 overall, representing a net inflow (Figure 1). However, this level of migration is still lower than what had occurred in the September 2006 quarter (a net inflow of 315) and is considerably lower than the high levels of migrations seen in 2002 and 2003. The decrease is mostly due to higher number of departures in the September 2007 quarter.

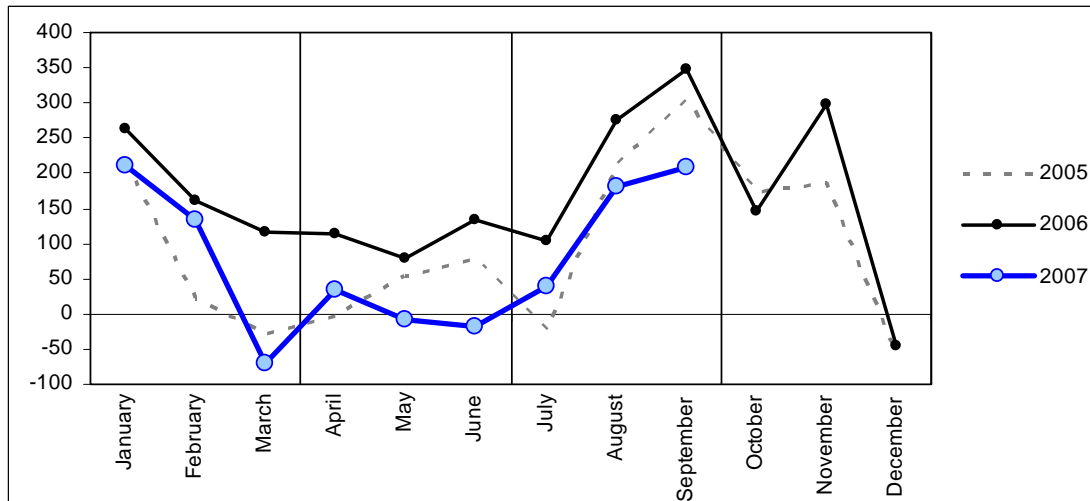
Figure 1. Monthly Net PLT Migration of Pre-School-Age Migrants (2005- 2007)



Primary PLT Migration

Net PLT migration of primary school-age children (5 to 12 year-olds) has tracked below the level seen in 2006 for all months this year. In the September 2007 quarter, net PLT migration of primary-age children totalled 428, representing a net migration inflow (Figure 2). This is lower than the level of inflow experienced during the September 2006 quarter (a net inflow of 728) and is considerably lower than the high levels of migration inflows seen in 2002 and 2003. The decrease is attributed to both higher number of departures and lower number of arrivals in the September 2007 quarter.

Figure 2. Monthly Net PLT Migration of Primary-Age Migrants (2005-2007)

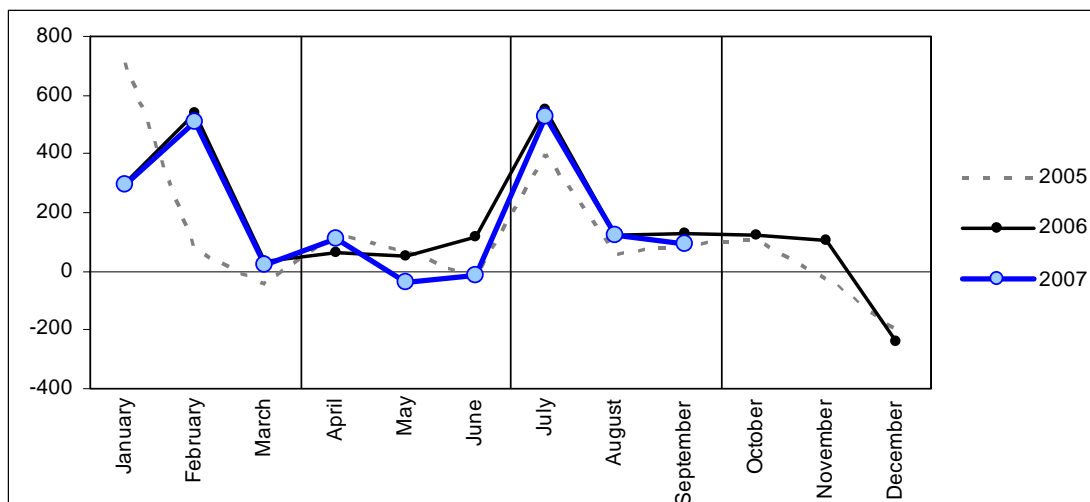


Secondary PLT Migration

For the quarter ended September 2007, net PLT migration of secondary school-age children (13 to 17 year-olds) totalled 738 (a net inflow). This is similar to the inflow of 800 secondary school-age migrants seen in the September 2006 quarter (Figure 3). The slight decline in migration inflow came from a relatively larger increase in the number of departures comparing to the increase in arrivals in the September 2007 quarter.

Secondary-age migrants show a distinctive seasonal pattern. For migrants in this age group, the number of arrivals tends to be higher at the beginning of the year as well as around July. The high level of migration inflows in January and February ties in with the start of the NZ schooling year while July, in which the start of term 3 normally occurs, coincides with the end of a schooling year for countries in the Northern Hemisphere.

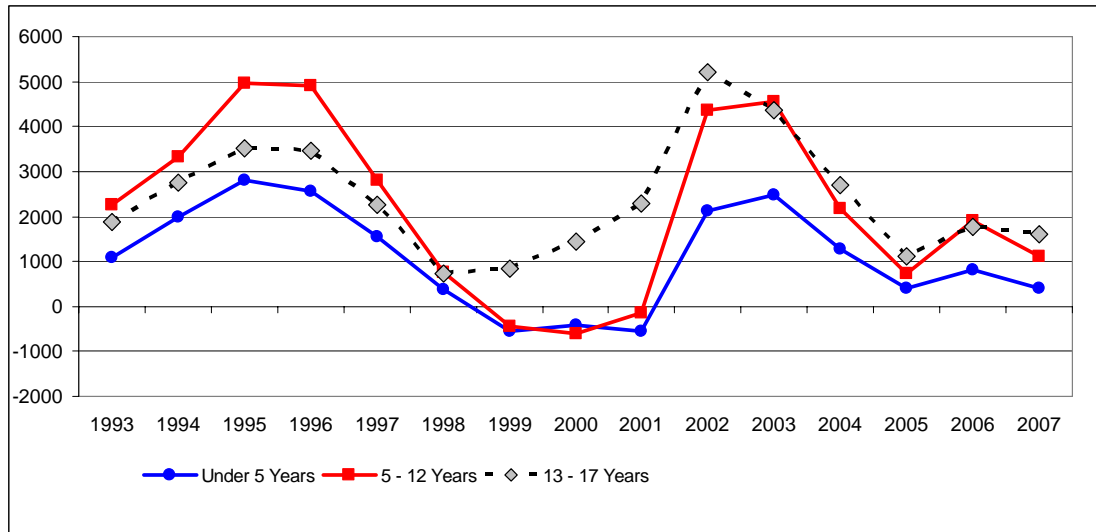
Figure 3. Monthly Net PLT Migration of Secondary-Age Migrants (2005-2007)



PART 2 — Year-to-Date³ Arrivals and Departures

Net PLT migration for all age groups has varied considerably over the past decade, with high levels of migration in 1995, 1996, 2002 and 2003. School-age migration shows similar patterns to migration for all ages with the exception of secondary-age group, which experienced consistent levels of migration inflows even in years where total migration was negative. Figure 4 illustrates the level of net migration for the three age groups within the 0 to 17 year-olds from 1993 to 2007.

Figure 4. Net PLT Migration by Age Group, Years Ended September 1993-2007

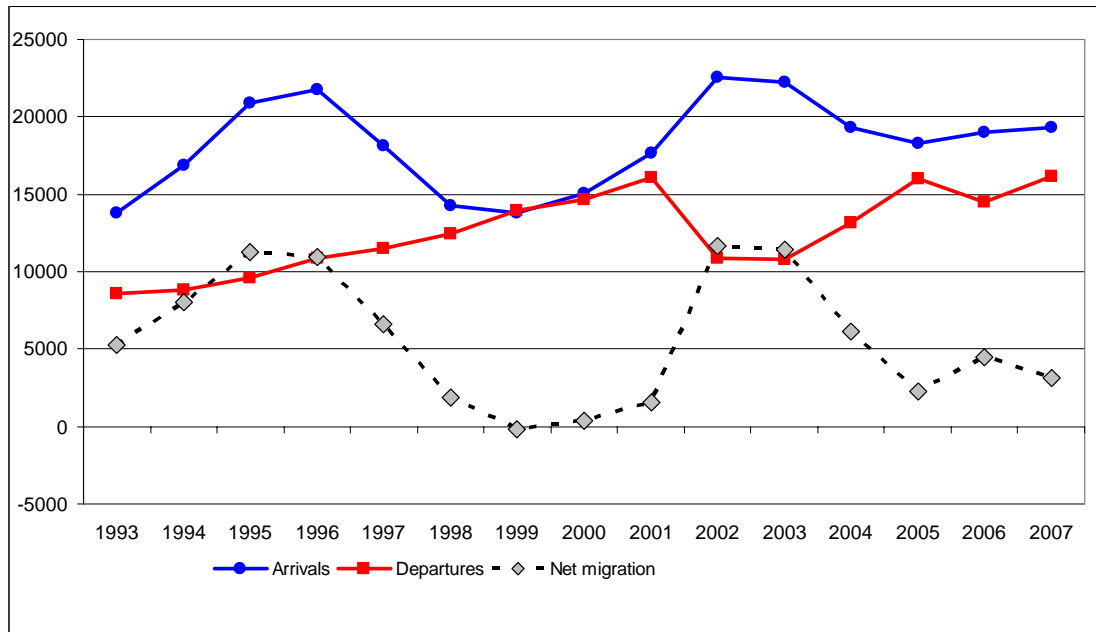


When analysing changes in migration it is important to also look at inflows and outflows separately. For example, a high level of arrivals coupled with a high level of departures will result in low net migration figures. However, high arrivals could have a large impact on classrooms due to the diverse needs of children with different languages and cultural backgrounds. Consequently, looking at the actual inflows and outflows will provide a more comprehensive picture than the net migration figures alone (see Figure 5).

In the year to September 2007, the level of PLT departures of 0 to 17 year-olds was the highest since 1993 (16,175); with PLT arrivals tracking slightly higher (19,306) but not at the highest level. The net PLT migration is relatively low (3,131) and has declined from the level seen in the previous year (4,483).

³ A year here refers to the September year (October 2006 through to September 2007).

Figure 5. Arrivals, Departures and Net PLT Migration of 0 to 17 year-olds, Years Ended September 1993-2007



PART 3 — Implication for School Rolls

Latest Migration Projections

Actual net PLT migrants and school-age migrants for the year ended June 2007 came to 10,100 and 3,100 respectively. This is below the level of migration projection produced by SNZ in July last year, which estimated 13,000 of all-age and 3,600 of school-age net PLT migrants in 2007.

Table 1: Actual and Projected Migration for the Year Ended June 2007

	Actual	Projected*	% Difference**
5 to 17 Year-Olds	3,100	3,600	-14%
All Ages	10,100	13,000	-22%

* Based on SNZ's medium level of migration projection assumptions (July 2006 update).

** The difference between actual and projected migration as a proportion of projected migration.

Net PLT migration statistics provide a starting point for estimating the number of migrants in schools, as it includes all children intending to enter or leave New Zealand for a period of 12 months or more⁴.

Projected PLT Migrants Entering NZ Schools

In the latest update of the National School Roll Projections (NSRP), estimates were made on the number of PLT migrants who will enrol in NZ schools by year-of-schooling. Table 2 summarises the number of PLT migrants expected to enter NZ schools in the coming years under the NSRP.

Table 2: Projected PLT Migrants Entering NZ Schools

Year	Primary*	Secondary**	Total
2007 (estimated actual)	2,800	1,500	4,400
2008	2,900	1,200	4,100
2009	3,000	1,400	4,400
2010	2,700	1,300	4,000
2011	2,400	1,200	3,600
2012 onwards	2,400	1,200	3,700

Source: October 2007 update of the National School Roll Projections. Figures may not add up due to rounding.

* Primary totals, representing Year 1 to Year 8 students, include 0 to 4 year-old migrants who arrived in NZ in the previous years and are expected to turn 5 in the projected years.

** Secondary totals represent projected full-time equivalent migrants expected to enrol in Year 9 to Year 15.

⁴ Note that the number of net PLT school-age migrants does not translate directly into the number of extra children in schools. Migrant children may enter schools as regular students, as foreign fee-paying students, or they may not enter the schooling system at all.

Appendix 1: Definitions

Permanent and Long-Term Arrivals consist of overseas migrants who arrive in NZ intending to stay for a period of 12 months or more, plus NZ residents returning after an absence of 12 months or more.

Permanent and Long-Term Departures include NZ residents departing for an intended period of 12 months or more plus overseas visitors departing from NZ after a stay of 12 months or more.

Net Permanent and Long-Term Migrants are calculated as the arrivals minus departures. Permanent and long-term migrants include students and those on working and holiday visas or permits, where the person does not intend (at least initially) to remain permanently in the country.

Note that the number of net PLT school-age migrants does not translate directly into the number of extra pupils in schools. Migrant children may enter schools as regular students (i.e. with their parents who become residents), foreign fee paying students, or they may not enter schools at all. A migrant may also indicate that they are here for a short-term visit but end up enrolling in a school over consecutive years or alternatively indicate that they are here on a permanent basis and end up only staying for a much shorter period. Hence the net PLT migration data is limited and should only be viewed as indicative of the number of migrant children here for an extended period.

Net inflow occurs when arrivals exceed departures.

Net outflow occurs when departures exceed arrivals.