

## Pasifika tertiary education students by ethnicity

Domestic enrolments by Pasifika peoples in formal tertiary education increased from 2007 to 2008 by 1.8 percent overall. This compared to an increase of 8.4 percent from 2006 to 2007. In 2008, enrolments increased for Tongans, up 7.8 percent, Other Pasifika, up 3.3 percent, Fijians, up 2.3 percent, and Samoans, up 1.5 percent. Enrolments made by Tokelauans decreased from 2007 to 2008 by 8.3 percent while enrolments by Cook Islanders and Niueans remained stable.

Students identifying themselves as Samoan made 13,400 enrolments in 2008 (out of a total of 29,800 domestic Pasifika enrolments). After Samoans, Cook Islanders were the second largest Pasifika student group followed by Tongan students who had the biggest increase in their number from 2007 to 2008.

Table 1 below lists the number of enrolments in formal qualifications of more than one week's duration in 2008 for each Pasifika ethnicity. Also included are the proportions each ethnicity represented of total Pasifika enrolments in 2008 and of the total New Zealand population aged 15 years and over in 2006.

Table 1: Number of formal enrolments by Pasifika ethnicity

	Pasifika enrolments			Proportion of the NZ population
	2008	Change 07-08	Proportion of Pasifika enrolments	
		%	%	%
Samoans	13,400	1.5	44.9	2.6
Cook Islanders	5,840	0.1	19.6	1.1
Tongans	5,230	7.8	17.5	0.9
Fijians	3,260	2.3	10.9	0.2
Niueans	2,100	-0.7	7.0	0.4
Other Pasifika	1,120	3.3	3.8	0.2
Tokelauans	693	-8.3	2.3	0.1
Total Pasifika	29,800	1.8	100	5.2

\*Statistics New Zealand, 2006 Census of Population and Dwellings.

For a factsheet on all domestic Pasifika tertiary education students go to:  
[www.educationcounts.govt.nz](http://www.educationcounts.govt.nz)

### About the data used in this fact-sheet:

The information presented here refers to New Zealand's domestic Pasifika students enrolled in provider-based formal qualifications of more than one week's duration, unless otherwise stated.

Cook Islanders, Niueans and Tokelauans are grouped with domestic Pasifika students, whether they are resident in New Zealand or not. Fijian, Tongan and Samoan students who are not New Zealand citizens or residents are classed as international students.

In 2000, the data collection was extended to record multiple ethnicities. Before this, the number of Pasifika students was under-stated. Only one ethnicity was collected before 2000, while now up to three ethnicities are collected and students are counted in each group.

Students may be enrolled with a tertiary education provider at any time during the year.

From 1999 onwards, information on students in private training establishments has been included in the main statistical collections. Private providers are included in those collections if they receive government enrolments-based funding or if their students were eligible to apply for loans or allowances.

The equivalent full-time student (EFTS) unit referred to in this factsheet is a measure or 'size' of each student's enrolment. One equivalent full-time student unit represents the load taken by a student enrolled full-time for one year. Part-time study years are expressed as proportions of an EFTS, for example, 0.75 EFTS. The equivalent full-time student count is the sum of the EFTS units for a year.

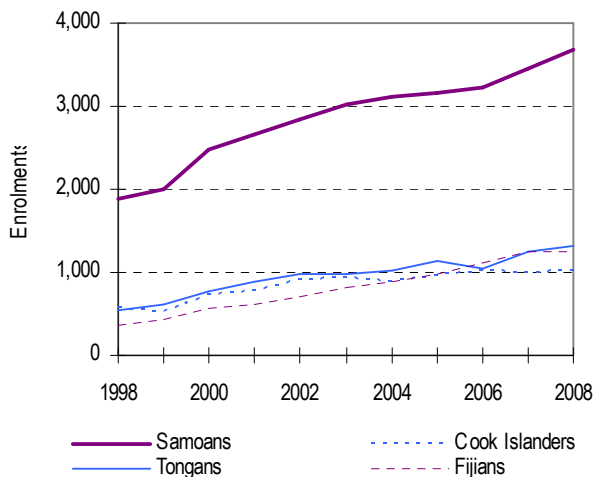
The equivalent full-time student count used in this fact-sheet does not equate to the count of student component-funded learners.

### Study in lower-level certificates remains stable<sup>1</sup>

Fifty percent of Pasifika students were enrolled in certificate-level qualifications in 2008 and in 2007.

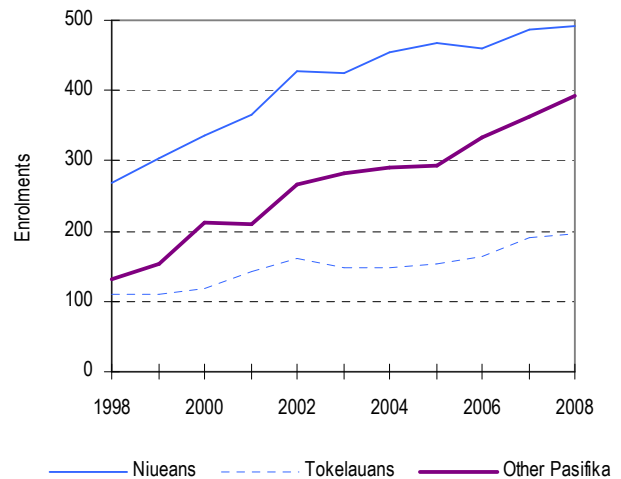
While lower-level certificate study by Pasifika women decreased for five out of the seven ethnicities, the decreases were small, and the proportions of Cook Islanders and Tongans studying level 1 to 3 certificates actually increased. Similarly, for Pasifika men, the proportions in level 1 to 3 certificates for the larger groups remained stable or increased slightly with the more significant decreases occurring in the smaller groups. Among male students, 36 percent of Samoans studied lower-level certificates, 49 percent of Cook Islanders and 39 percent of Tongans. The proportion of Fijian men in level 1 to 3 certificates increased from 20 percent in 2007 to 23 percent in 2008.

Figure 1: Samoans, Cook Islanders, Tongans and Fijians in bachelors-level study



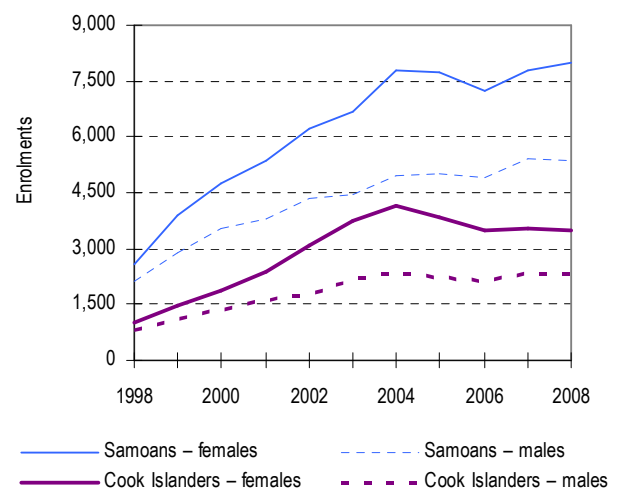
From 2007 to 2008, study by Pasifika women at bachelors level increased for Samoans (up 1.4 percentage points), Cook Islanders (up 0.7 percentage points), Tokelauans (up 1.8 percentage points) and Other Pasifika (up 2.4 percentage points). Bachelors-level study remained stable for Niuean women in 2008 and it decreased slightly for Tongan and Fijian women. Study by Pasifika men at bachelors level increased from 2007 to 2008 by 3.4 percentage points for Other Pasifika and by 2.7 percentage points for Niueans. Bachelors-level study by Pasifika men decreased for the other ethnicities with the decreases ranging from 0.7 percentage points to 3.8 percentage points.

Figure 2: Niueans, Tokelauans and Other Pasifika in bachelors-level study



The gender balance among Pasifika students has moved considerably in favour of women over the last 10 years. Comparing the 2008 year to 1998 shows that the proportion of female students increased for each of the ethnicities as follows: Samoans 60 percent (up from 54 percent), Cook Islanders 60 percent (up from 55 percent), Tongans 57 percent (up from 52 percent), Fijians 53 percent (up from 50 percent), Niueans 61 percent (up from 55 percent), Tokelauans 59 percent (up from 52 percent) and Other Pasifika 60 percent (up from 54 percent). In Figure 3 the enrolments for the two biggest Pasifika student groups are graphed by gender.

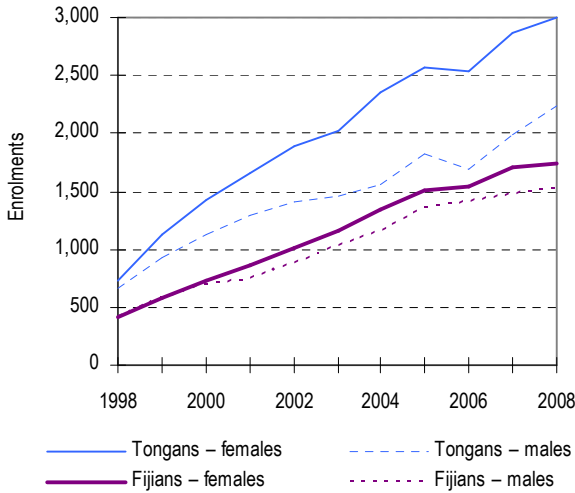
Figure 3: Samoans and Cook Islanders in formal tertiary education by gender



More recently, from 2007 to 2008, the proportion of female students decreased for Fijian and Tokelauan students by one percentage point and for Tongan students by two percentage points. In the case of Cook Islanders the gender balance was 60 percent in favour of women in 2008 compared to 63 percent in 2003.

<sup>1</sup> This section is based on equivalent full-time student units.

Figure 4: Tongans and Fijians in formal tertiary education by gender



### Trends in tertiary qualifications and Pasifika students

Over the years from 1998 to 2008, the proportion of Pasifika people aged 15 years and over with a bachelors or higher qualification more than doubled from 2.4 percent in 1998 to 5.9 percent in 2008. Figures 5 to 8 illustrate steady increases in the number of Pasifika students completing tertiary education qualifications.

Progress toward higher achievement for Pasifika people is likely in the foreseeable future as the number of Pasifika students aged under 25 years enrolled in qualifications at level 4 and above has risen significantly over the last five years – 5.0 percent, on average, per year. As younger students tend to study with the aim of getting a qualification it is expected that qualification completion rates for Pasifika students will increase.

Overall, the proportion of Pasifika people with a tertiary qualification has improved at a slower rate than the increase in the participation of Pasifika students. The proportion of Pasifika people with a tertiary qualification has varied over the last 10 years from 24 percent to 31 percent of the Pasifika population aged 15 years and over. Information from the *Household Labour Force Survey* for the 2008 year shows that 28 percent of Pasifika held a tertiary qualification, compared to 50 percent for all New Zealanders aged 15 years and over.

Note: Data for 2007 is missing from Figures 5 to 8 due to process changes made to the collection of qualification completions. Because of transitional problems, some providers were unable to return their qualification completions records for 2007.

Figure 5: Pasifika female students who completed a qualification by ethnicity

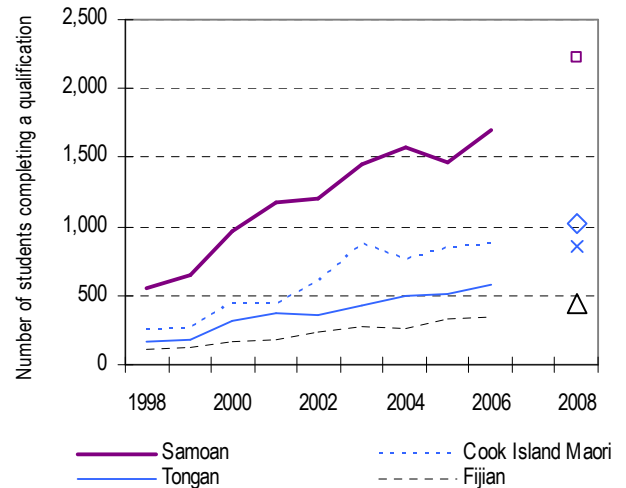


Figure 6: Pasifika female students who completed a qualification by ethnicity

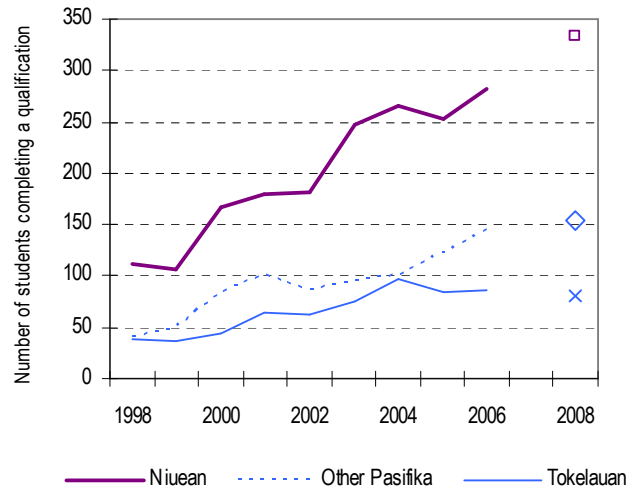


Figure 7: Pasifika male students who completed a qualification by ethnicity

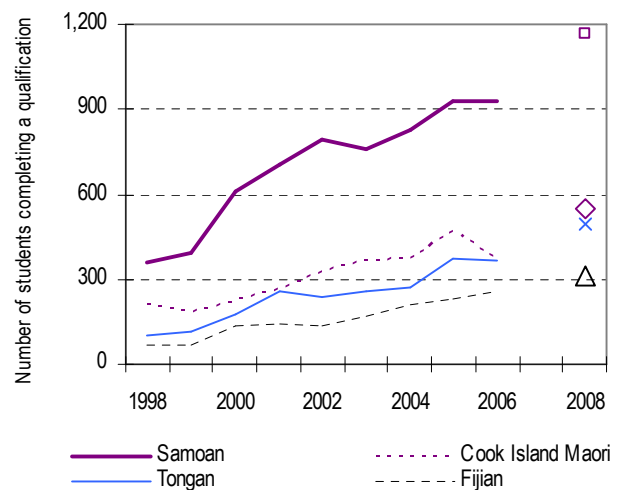
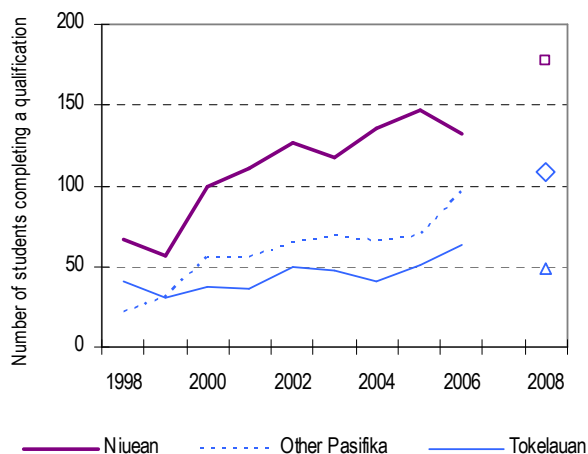


Figure 8: Pasifika male students who completed a qualification by ethnicity



### Broad fields of study

In 2009, the Ministry of Education introduced new field of study information focussing on the courses studied by tertiary education students. This new approach aims to strengthen the links between the demand for skills and knowledge from the labour market and their supply by the education sector. Seventy-one fields of study are now

available by ethnic group from the Ministry's Education Counts website. [www.educationcounts.govt.nz/\\_\\_data/assets/excel\\_doc/0015/41703/Fos\\_efts\\_tables31109.xls](http://www.educationcounts.govt.nz/__data/assets/excel_doc/0015/41703/Fos_efts_tables31109.xls)

Based on equivalent full-time student units, the proportion of Samoans studying *management and commerce* remained stable from 2007 to 2008 at 29 percent. *Society and culture* was the next largest field of study for Samoans at 22 percent, followed by *education* at 9.8 percent and *creative arts* at 8.0 percent. Similarly, the top four common broad fields of study of Cook Islanders in 2008 were *management and commerce* (30 percent) followed by *society and culture* (19 percent), *creative arts* (7.4 percent) and *education* (6.2 percent).

*Management and commerce* and *society and culture* were also the top two fields of study for each of the other Pasifika ethnicities. *Health* was the third most common field for Tokelauans and Other Pasifika (12 percent each) and also for Fijians (11 percent). Fijians were the only Pasifika ethnicity in 2008 to have almost 10 percent of students in the field of natural and physical sciences. The proportions of the other ethnicities studying natural and physical sciences in 2008 ranged from 3.0 percent of Cook Island students to 7.6 percent of Other Pasifika students.

Table 1: Distribution of equivalent full-time students by ethnicity and broad field of study

	Samoans		Cook Islanders		Tongans		Fijians		Niueans		Tokelauans		Other Pasifika	
	2007	2008	2007	2008	2007	2008	2007	2008	2007	2008	2007	2008	2007	2008
	Percentage													
Agriculture, environmental & related studies	0.7	0.7	1.7	1.9	0.7	0.8	1.0	1.0	1.0	1.2	0.8	1.1	1.4	0.9
Architecture & building	3.2	3.4	3.4	3.9	3.6	4.3	2.4	3.1	3.1	3.5	3.0	3.1	2.3	2.4
Creative arts	7.7	8.0	7.2	7.4	7.2	6.0	5.2	5.4	7.2	7.4	6.5	9.3	7.7	7.1
Education	9.7	9.8	7.6	6.2	6.6	5.6	5.9	7.1	9.3	8.9	9.3	8.3	7.5	8.2
Engineering & related technologies	4.5	4.4	5.5	6.2	5.4	5.7	8.5	9.7	5.2	4.3	6.9	8.0	5.8	5.0
Food, hospitality & personal services	3.5	3.5	7.1	6.9	3.4	3.7	2.9	2.3	6.5	6.3	5.1	4.6	2.4	2.1
Health	6.3	6.5	5.1	6.0	6.8	6.8	10.8	11.0	7.2	7.5	11.8	11.9	10.9	12.3
Information technology	4.4	4.1	4.4	4.4	5.3	4.6	6.4	5.5	4.4	4.3	3.4	4.4	5.2	4.0
Management & commerce	28.7	29.2	29.6	30.3	28.2	30.3	24.3	25.4	27.3	28.8	23.2	21.8	20.0	19.7
Mixed field programmes	4.8	4.7	5.2	5.0	5.6	5.6	2.8	2.5	5.3	4.9	4.2	3.2	3.3	3.1
Natural & physical sciences	3.9	3.8	3.3	3.0	5.0	5.1	10.4	8.9	3.3	3.2	4.1	4.4	6.6	7.6
Society & culture	22.7	21.9	19.9	18.9	22.2	21.5	19.6	18.1	20.3	19.8	21.6	19.9	26.9	27.5
Total students	100%	100%	100%	100%	100%	100%	100%	100%	100%	100%	100%	100%	100%	100%

<b>Domestic Samoan tertiary education students by selected characteristics</b>												
<b>Type of qualification (domestic students)</b>	<b>Student enrolments</b>						<b>Equivalent full-time students</b>					
	1998	2003	2006	2007	2008	Change 07-08	1998	2003	2006	2007	2008	Change 07-08
Students in formal qualifications > 0.03 EFTS <sup>1</sup>	4,690	11,140	12,121	13,189	13,388	1.5%	3,199	7,383	7,694	8,283	8,454	2.1%
Students in formal qualifications < 0.03 EFTS <sup>2</sup>	na	1,260	2,011	1,920	739	-61.5%	na	71	106	122	68	-44.2%
Students in informal education programmes <sup>3</sup>	na	4,220	2,176	1,802	1,618	-10.2%	na	322	138	104	93	-11.3%
<b>Domestic Samoan students enrolled in formal qualifications &gt; 0.03 EFTS<sup>1</sup></b>												
<b>Qualification level</b>												
Certificates 1-3	1,653	5,119	5,300	5,798	5,657	-2.4%	833	2,617	2,576	2,759	2,786	1.0%
Certificates 4	172	1,825	2,148	2,473	2,592	4.8%	63	1,074	1,229	1,379	1,409	2.2%
Diplomas 5-7	938	1,783	1,961	2,071	2,111	1.9%	604	1,151	1,166	1,187	1,167	-1.7%
Bachelors	1,890	3,017	3,229	3,450	3,682	6.7%	1,532	2,334	2,464	2,670	2,781	4.1%
Honours and postgraduate cert./dip.	104	154	250	291	307	5.5%	73	90	140	158	174	10.0%
Masters	108	180	160	155	160	3.2%	81	102	84	87	89	2.0%
Doctorates	13	23	35	42	46	9.5%	13	16	36	43	48	11.5%
<b>Age group</b>												
Under 18 years	120	584	700	722	662	-8.3%	80	393	476	430	428	-0.5%
18 to 19 years	773	1,715	2,020	2,297	2,466	7.4%	629	1,417	1,686	1,884	2,034	8.0%
20 to 24 years	1,585	2,874	2,965	3,118	3,265	4.7%	1,236	2,136	2,164	2,272	2,323	2.2%
25 to 39 years	1,668	4,148	4,164	4,471	4,366	-2.3%	966	2,393	2,216	2,407	2,374	-1.4%
40 years and over	541	1,819	2,272	2,581	2,629	1.9%	286	1,044	1,151	1,291	1,295	0.4%
<b>Common fields of study</b>												
Agriculture, environmental and related studies	42	161	219	256	237	-7.4%	26	77	69	61	59	-4.2%
Architecture and building	129	386	477	477	560	17.4%	64	205	255	266	288	8.4%
Creative arts	138	1,576	1,675	1,794	1,868	4.1%	120	617	607	638	676	6.0%
Education	478	1,425	1,415	1,628	1,635	0.4%	373	807	788	802	827	3.2%
Engineering and related technologies	401	816	933	1,087	980	-9.8%	207	371	367	369	373	1.1%
Food, hospitality and personal services	92	392	542	566	553	-2.3%	45	192	277	292	299	2.4%
Health	167	1,172	1,441	1,553	1,539	-0.9%	117	353	444	518	548	5.6%
Information technology	193	1,669	1,656	1,571	1,538	-2.1%	107	373	407	363	347	-4.3%
Management and commerce	1,261	4,469	4,762	5,443	5,641	3.6%	744	1,760	2,044	2,380	2,467	3.6%
Mixed field programmes	487	2,270	1,876	1,874	2,004	6.9%	255	546	443	394	398	1.2%
Natural and physical sciences	259	998	1,033	1,185	1,150	-3.0%	194	266	290	325	319	-1.9%
Society and culture	1,237	4,077	4,041	4,392	4,311	-1.8%	947	1,815	1,704	1,877	1,854	-1.2%
<b>Sub-sector</b>												
Universities	1,692	3,110	3,889	4,179	4,195	0.4%	1,402	2,377	2,933	3,157	3,174	0.5%
Institutes of technology and polytechnics	2,701	3,491	4,093	4,765	4,600	-3.5%	1,510	1,908	1,910	2,112	2,029	-3.9%
Colleges of education	349	642	70				257	442	40			
Wānanga	43	1,275	814	883	999	13.1%	30	787	415	486	559	15.1%
Public providers	4,690	8,269	8,699	9,632	9,598	-0.4%	3,199	5,514	5,298	5,755	5,763	0.1%
Private training establishments	na	3,192	3,735	3,920	4,115	5.0%	na	1,869	2,396	2,529	2,691	6.4%
<b>Study type</b>												
Full-time full-year	2,194	4,527	4,585	4,911	4,935	0.5%	2,259	4,747	4,761	5,121	5,144	0.4%
Full-time part-year	721	2,125	2,445	2,469	2,342	-5.1%	397	1,168	1,284	1,286	1,241	-3.5%
Part-time full-year	1,104	2,000	2,164	2,224	2,365	6.3%	428	852	984	1,016	1,101	8.3%
Part-time part-year	671	2,488	2,927	3,585	3,746	4.5%	115	615	664	861	969	12.6%
<b>Female / Male</b>												
Female	2,554	6,689	7,216	7,774	8,009	3.0%	1,796	4,425	4,687	5,076	5,232	3.1%
Male	2,136	4,451	4,905	5,415	5,379	-0.7%	1,403	2,958	3,007	3,207	3,222	0.5%
<b>Gaining qualifications and age-standardised participation rate</b>												
No. of students who completed a qualification	910	2,204	2,622	na	3,392							
Number of qualifications completed	950	2,341	2,833	na	3,631							
<sup>1</sup> Students enrolled at any time during the year with a tertiary education provider in formal qualifications of greater than 0.03 EFTS (more than one week's duration). <sup>2</sup> Students enrolled at any time during the year with a tertiary education provider in formal qualifications of less than 0.03 EFTS (less than one week's duration). <sup>3</sup> Students enrolled at any time during the year with a tertiary education provider in informal programmes, i.e. programmes not registered on the New Zealand Register of Quality Assured Qualifications.												
<b>Notes:</b> (1) The equivalent full-time student count used in this report does not equate to the funded equivalent full-time student count. The data is also not adjusted to allow for students who do not complete their study programme. (2) The colleges of education have merged with nearby universities over the last decade. (3) From 2003, the field of study data is based on courses studied. The 1998 data is based on qualifications and is therefore not directly comparable.												

## Domestic female Samoan tertiary education students by selected characteristics

Type of qualification (domestic students)	Student enrolments						Equivalent full-time students					
	1998	2003	2006	2007	2008	Change 07-08	1998	2003	2006	2007	2008	Change 07-08
Students in formal qualifications > 0.03 EFTS <sup>1</sup>	2,554	6,689	7,216	7,774	8,009	3.0%	1,796	4,425	4,687	5,076	5,232	3.1%
Students in formal qualifications < 0.03 EFTS <sup>2</sup>	na	701	509	495	378	-23.6%	na	35	51	66	45	-31.8%
Students in informal education programmes <sup>3</sup>	na	2,090	1,384	1,144	1,018	-11.0%	na	196	87	70	60	-14.3%
<b>Domestic female Samoan students enrolled in formal qualifications &gt; 0.03 EFTS<sup>1</sup></b>												
<b>Qualification level</b>												
Certificates 1-3	797	2,999	3,034	3,267	3,248	-0.6%	403	1,480	1,493	1,612	1,632	1.3%
Certificates 4	63	1,152	1,276	1,430	1,472	2.9%	21	681	760	833	853	2.4%
Diplomas 5-7	559	1,049	1,181	1,269	1,306	2.9%	375	676	720	742	731	-1.5%
Bachelors	1,110	1,894	2,023	2,205	2,435	10.4%	896	1,466	1,554	1,697	1,824	7.5%
Honours and postgraduate cert./dip.	58	84	158	207	196	-5.3%	40	46	80	108	101	-7.1%
Masters	70	119	101	97	98	1.0%	52	67	53	55	57	4.8%
Doctorates	9	16	26	30	31	3.3%	9	9	28	30	34	13.5%
<b>Age group</b>												
Under 18 years	37	296	376	383	342	-10.7%	26	189	262	233	241	3.6%
18 to 19 years	440	1,031	1,185	1,386	1,480	6.8%	371	861	997	1,159	1,246	7.5%
20 to 24 years	840	1,676	1,726	1,795	1,888	5.2%	679	1,256	1,292	1,347	1,375	2.1%
25 to 39 years	893	2,487	2,468	2,629	2,633	0.2%	537	1,420	1,344	1,493	1,492	-0.1%
40 years and over	342	1,199	1,461	1,581	1,666	5.4%	183	699	792	845	878	3.9%
<b>Common fields of study</b>												
Agriculture, environmental and related studies	13	36	46	71	61	-14.1%	10	10	18	16	18	11.5%
Architecture and building	13	82	80	56	60	7.1%	8	20	24	21	22	8.3%
Creative arts	63	836	895	1,034	1,054	1.9%	56	287	282	335	359	7.3%
Education	391	1,087	1,100	1,230	1,219	-0.9%	309	655	659	654	653	-0.2%
Engineering and related technologies	27	185	210	243	224	-7.8%	18	70	79	90	83	-7.3%
Food, hospitality and personal services	45	269	404	406	390	-3.9%	22	128	208	205	215	4.7%
Health	140	611	812	858	833	-2.9%	98	236	295	336	376	11.9%
Information technology	90	902	957	887	899	1.4%	46	165	194	170	172	1.2%
Management and commerce	755	2,986	3,194	3,707	3,828	3.3%	443	1,243	1,451	1,713	1,756	2.5%
Mixed field programmes	249	1,555	1,271	1,226	1,285	4.8%	128	360	265	234	236	0.6%
Natural and physical sciences	124	529	585	659	623	-5.5%	93	149	170	189	179	-5.0%
Society and culture	751	2,437	2,473	2,620	2,641	0.8%	564	1,100	1,043	1,114	1,163	4.4%
<b>Sub-sector</b>												
Universities	957	1,913	2,496	2,699	2,720	0.8%	791	1,473	1,915	2,040	2,060	1.0%
Institutes of technology and polytechnics	1,372	1,873	2,044	2,329	2,229	-4.3%	791	971	935	1,048	974	-7.1%
Colleges of education	280	496	48				209	346	28			
Wānanga	9	836	529	542	669	23.4%	5	497	264	304	375	23.2%
Public providers	2,554	4,942	7,216	7,774	8,009	3.0%	1,796	3,287	3,141	3,393	3,408	0.5%
Private training establishments	na	1,949	2,414	2,582	2,726	5.6%	na	1,138	1,546	1,684	1,824	8.3%
<b>Study type</b>												
Full-time full-year	1,280	2,659	2,808	3,052	3,077	0.8%	1,325	2,812	2,929	3,205	3,227	0.7%
Full-time part-year	320	1,222	1,383	1,353	1,317	-2.7%	173	680	754	738	735	-0.3%
Part-time full-year	626	1,280	1,338	1,342	1,432	6.7%	242	553	617	620	683	10.3%
Part-time part-year	328	1,528	1,687	2,027	2,183	7.7%	56	379	387	514	586	14.1%
<b>Gaining qualifications and age-standardised participation rate</b>												
No. of students who completed a qualification	551	1,448	1,695	na	2,226							
Number of qualifications completed	580	1,542	1,849	na	2,387							

<sup>1</sup> Students enrolled at any time during the year with a tertiary education provider in formal qualifications of greater than 0.03 EFTS (more than one week's duration).

<sup>2</sup> Students enrolled at any time during the year with a tertiary education provider in formal qualifications of less than 0.03 EFTS (less than one week's duration).

<sup>3</sup> Students enrolled at any time during the year with a tertiary education provider in informal programmes, i.e. programmes not registered on the New Zealand Register of Quality Assured Qualifications.

Notes: (1) The equivalent full-time student count used in this report does not equate to the funded equivalent full-time student count. The data is also not adjusted to allow for students who do not complete their study programme.

(2) The colleges of education have merged with nearby universities over the last decade.

(3) From 2003, the field of study data is based on courses studied. The 1998 data is based on qualifications and is therefore not directly comparable.

<b>Domestic male Samoan tertiary education students by selected characteristics</b>												
	<b>Student enrolments</b>						<b>Equivalent full-time students</b>					
	1998	2003	2006	2007	2008	Change 07-08	1998	2003	2006	2007	2008	Change 07-08
<b>Type of qualification (domestic students)</b>												
Students in formal qualifications > 0.03 EFTS <sup>1</sup>	2,136	4,451	4,905	5,415	5,379	-0.7%	1,403	2,958	3,007	3,207	3,222	0.5%
Students in formal qualifications < 0.03 EFTS <sup>2</sup>	na	559	1,502	1,425	361	-74.7%	na	36	55	56	23	-58.7%
Students in informal education programmes <sup>3</sup>	na	2,130	792	658	600	-8.8%	na	126	51	34	33	-5.1%
<b>Domestic male Samoan students enrolled in formal qualifications &gt; 0.03 EFTS<sup>1</sup></b>												
<b>Qualification level</b>												
Certificates 1-3	856	2,120	2,266	2,531	2,409	-4.8%	430	1,137	1,083	1,147	1,154	0.6%
Certificates 4	109	673	872	1,043	1,120	7.4%	42	393	470	546	556	1.9%
Diplomas 5-7	379	734	780	802	805	0.4%	229	475	446	445	436	-1.9%
Bachelors	780	1,123	1,206	1,245	1,247	0.2%	636	868	910	973	956	-1.8%
Honours and postgraduate cert./dip.	46	70	92	84	111	32.1%	33	44	60	50	74	46.8%
Masters	38	61	59	58	62	6.9%	29	35	31	33	32	-2.6%
Doctorates	4	7	9	12	15	25.0%	4	7	7	13	13	6.8%
<b>Age group</b>												
Under 18 years	83	288	324	339	320	-5.6%	55	204	214	197	187	-5.3%
18 to 19 years	333	684	835	911	986	8.2%	259	556	689	725	788	8.6%
20 to 24 years	745	1,198	1,239	1,323	1,377	4.1%	557	880	872	925	948	2.4%
25 to 39 years	775	1,661	1,696	1,842	1,733	-5.9%	429	973	872	914	882	-3.4%
40 years and over	199	620	811	1,000	963	-3.7%	103	345	360	446	418	-6.4%
<b>Common fields of study</b>												
Agriculture, environmental and related studies	29	125	173	185	176	-4.9%	17	67	52	45	41	-9.7%
Architecture and building	116	304	397	421	500	18.8%	56	185	232	245	265	8.4%
Creative arts	75	740	780	760	814	7.1%	64	329	325	303	317	4.7%
Education	87	338	315	398	416	4.5%	64	153	129	147	174	17.9%
Engineering and related technologies	374	631	723	844	756	-10.4%	188	301	287	280	290	3.7%
Food, hospitality and personal services	47	123	138	160	163	1.9%	23	64	69	87	84	-3.0%
Health	27	561	629	695	706	1.6%	19	117	149	182	171	-5.9%
Information technology	103	767	699	684	639	-6.6%	61	208	213	193	175	-9.1%
Management and commerce	506	1,483	1,568	1,736	1,813	4.4%	301	517	593	668	711	6.5%
Mixed field programmes	238	715	605	648	719	11.0%	126	186	178	159	163	2.1%
Natural and physical sciences	135	469	448	526	527	0.2%	101	117	120	136	139	2.2%
Society and culture	486	1,640	1,568	1,772	1,670	-5.8%	383	715	661	762	691	-9.3%
<b>Sub-sector</b>												
Universities	735	1,197	1,393	1,480	1,475	-0.3%	611	904	1,018	1,117	1,114	-0.3%
Institutes of technology and polytechnics	1,329	1,618	2,049	2,436	2,371	-2.7%	719	937	976	1,064	1,055	-0.8%
Colleges of education	69	146	22				48	96	12			
Wānanga	34	439	285	341	330	-3.2%	25	290	151	181	184	1.5%
Public providers	2,136	3,327	1,483	1,858	1,589	-14.5%	1,403	2,227	2,156	2,362	2,355	-0.3%
Private training establishments	na	1,243	1,321	1,338	1,389	3.8%	na	731	850	845	867	2.6%
<b>Study type</b>												
Full-time full-year	914	1,868	1,777	1,859	1,858	-0.1%	934	1,935	1,832	1,916	1,916	0.0%
Full-time part-year	401	903	1,062	1,116	1,025	-8.2%	224	488	530	548	505	-7.8%
Part-time full-year	478	720	826	882	933	5.8%	186	299	368	396	417	5.3%
Part-time part-year	343	960	1,240	1,558	1,563	0.3%	59	236	277	347	383	10.4%
<b>Gaining qualifications and age-standardised participation rate</b>												
No. of students who completed a qualification	359	756	927	na	1,166							
Number of qualifications completed	370	799	984	na	1,244							

<sup>1</sup> Students enrolled at any time during the year with a tertiary education provider in formal qualifications of greater than 0.03 EFTS (more than one week's duration).

<sup>2</sup> Students enrolled at any time during the year with a tertiary education provider in formal qualifications of less than 0.03 EFTS (less than one week's duration).

<sup>3</sup> Students enrolled at any time during the year with a tertiary education provider in informal programmes, i.e. programmes not registered on the New Zealand Register of Quality Assured Qualifications.

Notes: (1) The equivalent full-time student count used in this report does not equate to the funded equivalent full-time student count. The data is also not adjusted to allow for students who do not complete their study programme.  
(2) The colleges of education have merged with nearby universities over the last decade.  
(3) From 2003, the field of study data is based on courses studied. The 1998 data is based on qualifications and is therefore not directly comparable.

<b>Domestic Cook Island tertiary education students by selected characteristics</b>												
Type of qualification (domestic students)	Student enrolments						Equivalent full-time students					
	1998	2003	2006	2007	2008	Change 07-08	1998	2003	2006	2007	2008	Change 07-08
Students in formal qualifications > 0.03 EFTS <sup>1</sup>	1,814	5,884	5,637	5,837	5,843	0.1%	1,070	3,530	3,186	3,279	3,297	0.6%
Students in formal qualifications < 0.03 EFTS <sup>2</sup>	na	561	1,024	1,060	299	-71.8%	na	25	40	48	25	-48.4%
Students in informal education programmes <sup>3</sup>	na	2,402	931	602	580	-3.7%	na	307	67	48	38	-20.9%
<b>Domestic Cook Island students enrolled in formal qualifications &gt; 0.03 EFTS<sup>1</sup></b>												
<b>Qualification level</b>												
Certificates 1-3	821	3,426	3,180	3,320	3,197	-3.7%	411	1,561	1,378	1,435	1,474	2.7%
Certificates 4	108	1,292	1,005	1,067	1,180	10.6%	42	780	532	569	599	5.3%
Diplomas 5-7	322	727	746	760	766	0.8%	198	444	450	442	403	-8.9%
Bachelors	571	936	1,013	1,001	1,031	3.0%	385	674	731	745	735	-1.3%
Postgraduate	50	114	148	137	145	5.8%	34	71	96	88	86	-2.5%
<b>Age group</b>												
Under 18 years	67	407	417	388	375	-3.4%	50	283	286	237	216	-8.9%
18 to 19 years	254	672	748	789	864	9.5%	201	489	541	570	640	12.2%
20 to 24 years	485	1,264	1,222	1,221	1,227	0.5%	333	779	747	783	749	-4.4%
25 to 39 years	736	2,399	2,037	2,040	2,020	-1.0%	366	1,327	1,029	1,006	1,024	1.9%
40 years and over	272	1,142	1,213	1,399	1,357	-3.0%	120	653	583	683	668	-2.2%
<b>Common fields of study</b>												
Agriculture, environmental and related studies	37	183	233	220	211	-4.1%	18	57	53	56	61	8.7%
Architecture and building	64	193	226	217	268	23.5%	34	84	117	112	127	14.3%
Creative arts	66	632	595	619	640	3.4%	57	284	220	235	244	3.7%
Education	227	614	462	474	439	-7.4%	126	275	237	248	203	-18.2%
Engineering and related technologies	237	442	473	581	585	0.7%	106	181	157	182	204	12.2%
Food, hospitality and personal services	67	305	331	411	381	-7.3%	39	168	189	232	226	-2.4%
Health	50	635	721	693	696	0.4%	32	139	175	168	198	17.6%
Information technology	76	813	753	833	812	-2.5%	40	169	142	145	146	0.8%
Management and commerce	456	2,165	2,440	2,590	2,560	-1.2%	234	700	952	971	1,000	3.1%
Mixed field programmes	164	1,878	1,035	952	938	-1.5%	89	497	190	169	164	-3.4%
Natural and physical sciences	62	402	406	399	369	-7.5%	45	95	103	107	99	-7.4%
Society and culture	369	1,982	1,659	1,590	1,478	-7.0%	251	881	650	654	624	-4.6%
<b>Sub-sector</b>												
Universities	424	896	1,155	1,088	1,113	2.3%	316	625	816	789	777	-1.5%
Institutes of technology and polytechnics	1,212	2,022	2,209	2,396	2,184	-8.8%	641	847	892	994	892	-10.3%
Colleges of education	153	166	22				77	112	13			
Wānanga	46	1,828	901	1,051	1,178	12.1%	36	1,100	491	558	645	15.5%
Public providers	1,814	4,648	4,172	4,405	4,345	-1.4%	1,070	2,684	2,212	2,341	2,314	-1.2%
Private training establishments	na	1,472	1,642	1,572	1,641	4.4%	na	846	975	938	983	4.8%
<b>Study type</b>												
Full-time full-year	674	1,960	1,709	1,831	1,809	-1.2%	685	2,108	1,770	1,887	1,845	-2.3%
Full-time part-year	283	1,090	1,083	1,095	1,032	-5.8%	158	603	542	543	531	-2.3%
Part-time full-year	502	1,129	1,148	1,079	1,143	5.9%	166	460	492	458	465	1.4%
Part-time part-year	355	1,705	1,697	1,832	1,859	1.5%	61	359	382	390	457	17.2%
<b>Female / Male</b>												
Female	1,002	3,724	3,490	3,520	3,502	-0.5%	599	2,272	2,046	2,071	2,027	-2.1%
Male	812	2,160	2,147	2,317	2,341	1.0%	471	1,258	1,141	1,208	1,270	5.1%
<b>Gaining qualifications and age-standardised participation rate</b>												
No. of students who completed a qualification	451	1,242	1,247	na	1,576							
Number of qualifications completed	464	1,356	1,382	na	1,717							

<sup>1</sup> Students enrolled at any time during the year with a tertiary education provider in formal qualifications of greater than 0.03 EFTS (more than one week's duration).

<sup>2</sup> Students enrolled at any time during the year with a tertiary education provider in formal qualifications of less than 0.03 EFTS (less than one week's duration).

<sup>3</sup> Students enrolled at any time during the year with a tertiary education provider in informal programmes, i.e. programmes not registered on the New Zealand Register of Quality Assured Qualifications.

Notes:

(1) The equivalent full-time student count used in this report does not equate to the funded equivalent full-time student count. The data is also not adjusted to allow for students who do not complete their study programme.

(2) The colleges of education have merged with nearby universities over the last decade.

(3) From 2003, the field of study data is based on courses studied. The 1998 data is based on qualifications and is therefore not directly comparable.

## Domestic female Cook Island tertiary education students by selected characteristics

Type of qualification (domestic students)	Student enrolments						Equivalent full-time students					
	1998	2003	2006	2007	2008	Change 07-08	1998	2003	2006	2007	2008	Change 07-08
Students in formal qualifications > 0.03 EFTS <sup>1</sup>	1,002	3,724	3,490	3,520	3,502	-0.5%	599	2,272	2,046	2,071	2,027	-2.1%
Students in formal qualifications < 0.03 EFTS <sup>2</sup>	na	93	108	121	92	-24.0%	na	9	11	16	14	-12.5%
Students in informal education programmes <sup>3</sup>	na	1,202	588	375	341	-9.1%	na	197	42	32	24	-25.0%
<b>Domestic female Cook Island students enrolled in formal qualifications &gt; 0.03 EFTS<sup>1</sup></b>												
<b>Qualification level</b>												
Certificates 1-3	407	2,180	1,953	1,899	1,848	-2.7%	200	981	874	839	855	2.0%
Certificates 4	47	825	621	642	669	4.2%	17	529	340	376	358	-4.6%
Diplomas 5-7	199	471	501	517	514	-0.6%	134	282	303	306	267	-12.6%
Bachelors	358	627	658	684	716	4.7%	228	439	476	502	505	0.5%
Postgraduate	29	67	91	81	19	-76.5%	20	40	53	48	41	-14.8%
<b>Age group</b>												
Under 18 years	22	211	239	200	198	-1.0%	17	144	170	127	118	-7.2%
18 to 19 years	128	403	433	468	524	12.0%	101	292	319	349	396	13.6%
20 to 24 years	258	804	755	719	715	-0.6%	181	493	467	470	432	-8.1%
25 to 39 years	428	1,556	1,284	1,269	1,213	-4.4%	226	890	684	662	643	-3.0%
40 years and over	166	750	779	864	852	-1.4%	74	453	406	463	439	-5.2%
<b>Common fields of study</b>												
Agriculture, environmental and related studies	na	54	78	48	46	-4.2%	na	17	14	12	14	11.8%
Architecture and building	na	44	31	32	33	3.1%	na	11	9	6	12	118.5%
Creative arts	30	382	389	409	385	-5.9%	26	173	138	155	146	-6.2%
Education	193	453	373	369	336	-8.9%	107	214	202	209	170	-18.6%
Engineering and related technologies	19	86	84	100	105	5.0%	12	34	34	29	36	21.4%
Food, hospitality and personal services	38	227	244	314	292	-7.0%	20	126	141	175	175	-0.1%
Health	39	368	425	382	356	-6.8%	24	102	130	120	130	8.4%
Information technology	43	497	502	515	486	-5.6%	19	94	74	78	76	-1.7%
Management and commerce	310	1,489	1,743	1,797	1,775	-1.2%	167	503	704	703	706	0.5%
Mixed field programmes	83	1,304	753	640	651	1.7%	42	349	123	104	105	1.2%
Natural and physical sciences	37	243	234	243	224	-7.8%	24	61	61	69	62	-9.3%
Society and culture	232	1,307	1,102	1,034	980	-5.2%	149	587	416	411	395	-4.1%
<b>Sub-sector</b>												
Universities	247	579	743	726	738	1.7%	178	392	528	520	513	-1.2%
Institutes of technology and polytechnics	616	1,114	1,141	1,211	1,093	-9.7%	336	457	479	539	463	-14.1%
Colleges of education	130	138	20				67	92	11			
Wānanga	22	1,294	675	710	792	11.5%	17	784	368	395	429	8.6%
Public providers	1,002	2,939	2,499	2,557	2,538	-0.7%	599	1,725	1,386	1,453	1,405	-3.3%
Private training establishments	na	960	1,120	1,055	1,064	0.9%	na	547	660	617	622	0.8%
<b>Study type</b>												
Full-time full-year	381	1,253	1,103	1,160	1,121	-3.4%	389	1,363	1,145	1,204	1,141	-5.3%
Full-time part-year	132	634	604	577	566	-1.9%	76	357	330	303	313	3.2%
Part-time full-year	303	732	763	721	721	0.0%	102	312	330	320	301	-5.9%
Part-time part-year	186	1,105	1,020	1,062	1,094	3.0%	32	240	240	243	272	12.0%
<b>Gaining qualifications and age-standardised participation rate</b>												
No. of students who completed a qualification	243	874	874	na	1,028							
Number of qualifications completed	252	966	971	na	1,120							

<sup>1</sup> Students enrolled at any time during the year with a tertiary education provider in formal qualifications of greater than 0.03 EFTS (more than one week's duration).

<sup>2</sup> Students enrolled at any time during the year with a tertiary education provider in formal qualifications of less than 0.03 EFTS (less than one week's duration).

<sup>3</sup> Students enrolled at any time during the year with a tertiary education provider in informal programmes, i.e. programmes not registered on the New Zealand Register of Quality Assured Qualifications.

### Notes:

(1) The equivalent full-time student count used in this report does not equate to the funded equivalent full-time student count. The data is also not adjusted to allow for students who do not complete their study programme.

(2) The colleges of education have merged with nearby universities over the last decade.

(3) From 2003, the field of study data is based on courses studied. The 1998 data is based on qualifications and is therefore not directly comparable.

<b>Domestic male Cook Island tertiary education students by selected characteristics</b>												
<b>Type of qualification (domestic students)</b>	<b>Student enrolments</b>						<b>Equivalent full-time students</b>					
	1998	2003	2006	2007	2008	Change 07-08	1998	2003	2006	2007	2008	Change 07-08
Students in formal qualifications > 0.03 EFTS <sup>1</sup>	812	2,160	2,147	2,317	2,341	1.0%	471	1,258	1,140	1,208	1,270	5.1%
Students in formal qualifications < 0.03 EFTS <sup>2</sup>	na	468	916	939	207	-78.0%	na	16	29	32	11	-66.4%
Students in informal education programmes <sup>3</sup>	na	1,200	343	227	239	5.3%	na	110	25	16	14	-12.6%
<b>Domestic male Cook Island students enrolled in formal qualifications &gt; 0.03 EFTS<sup>1</sup></b>												
<b>Qualification level</b>												
Certificates 1-3	414	1,246	1,227	1,421	1,349	-5.1%	211	581	504	596	619	3.8%
Certificates 4	61	467	384	425	511	20.2%	26	250	192	193	241	24.6%
Diplomas 5-7	123	256	245	243	252	3.7%	63	162	147	137	136	-0.7%
Bachelors	213	309	355	317	315	-0.6%	157	235	255	243	231	-5.0%
Postgraduate	21	47	57	56	126	125.0%	14	31	42	40	44	12.4%
<b>Age group</b>												
Under 18 years	45	196	178	188	177	-5.9%	34	139	116	110	98	-10.8%
18 to 19 years	126	269	315	321	340	5.9%	100	197	222	222	244	10.2%
20 to 24 years	227	460	467	502	512	2.0%	152	286	280	314	317	1.1%
25 to 39 years	308	843	753	771	807	4.7%	141	437	345	344	382	11.1%
40 years and over	106	392	434	535	505	-5.6%	45	200	177	220	229	4.3%
<b>Common fields of study</b>												
Agriculture, environmental and related studies	na	129	155	172	165	-4.1%	na	41	39	44	47	7.9%
Architecture and building	na	149	195	185	235	27.0%	na	73	109	106	115	8.8%
Creative arts	36	250	206	210	255	21.4%	31	111	82	80	99	22.8%
Education	34	161	89	105	103	-1.9%	19	61	35	39	33	-15.8%
Engineering and related technologies	218	356	389	481	480	-0.2%	94	147	124	152	168	10.5%
Food, hospitality and personal services	29	78	87	97	89	-8.2%	18	42	48	57	52	-9.4%
Health	11	267	296	311	340	9.3%	8	36	45	49	68	40.2%
Information technology	33	316	251	318	326	2.5%	21	75	68	67	70	3.7%
Management and commerce	146	676	697	793	785	-1.0%	67	196	248	268	294	9.7%
Mixed field programmes	81	574	282	312	287	-8.0%	46	147	67	66	59	-10.7%
Natural and physical sciences	25	159	172	156	145	-7.1%	21	34	43	38	37	-4.1%
Society and culture	137	675	557	556	498	-10.4%	102	294	234	242	229	-5.4%
<b>Sub-sector</b>												
Universities	177	317	412	362	375	3.6%	138	234	288	270	264	-2.0%
Institutes of technology and polytechnics	596	908	1,068	1,185	1,091	-7.9%	305	390	413	456	429	-5.8%
Colleges of education	23	28	2				10	20	2			
Wānanga	24	534	226	341	386	13.2%	19	316	123	163	216	32.5%
Public providers	812	1,709	1,673	1,848	1,807	-2.2%	471	959	826	888	909	2.4%
Private training establishments	na	512	522	517	577	11.6%	na	299	315	320	361	12.7%
<b>Study type</b>												
Full-time full-year	293	707	606	671	688	2.5%	296	745	625	683	704	3.1%
Full-time part-year	151	456	479	518	466	-10.0%	82	246	212	241	218	-9.3%
Part-time full-year	199	397	385	358	422	17.9%	64	147	161	138	163	18.5%
Part-time part-year	169	600	677	770	765	-0.6%	29	120	142	147	185	25.6%
<b>Gaining qualifications and age-standardised participation rate</b>												
No. of students who completed a qualification	208	368	373	na	548							
Number of qualifications completed	212	390	411	na	597							
<sup>1</sup> Students enrolled at any time during the year with a tertiary education provider in formal qualifications of greater than 0.03 EFTS (more than one week's duration). <sup>2</sup> Students enrolled at any time during the year with a tertiary education provider in formal qualifications of less than 0.03 EFTS (less than one week's duration). <sup>3</sup> Students enrolled at any time during the year with a tertiary education provider in informal programmes, i.e. programmes not registered on the New Zealand Register of Quality Assured Qualifications.												
<b>Notes:</b> (1) The equivalent full-time student count used in this report does not equate to the funded equivalent full-time student count. The data is also not adjusted to allow for students who do not complete their study programme. (2) The colleges of education have merged with nearby universities over the last decade. (3) From 2003, the field of study data is based on courses studied. The 1998 data is based on qualifications and is therefore not directly comparable.												

<b>Domestic Tongan tertiary education students by selected characteristics</b>												
Type of qualification (domestic students)	Student enrolments						Equivalent full-time students					
	1998	2003	2006	2007	2008	Change 07-08	1998	2003	2006	2007	2008	Change 07-08
Students in formal qualifications > 0.03 EFTS <sup>1</sup>	1,376	3,483	4,227	4,849	5,227	7.8%	974	2,346	2,784	3,125	3,397	8.7%
Students in formal qualifications < 0.03 EFTS <sup>2</sup>	na	357	969	978	234	-76.1%	na	18	38	48	21	-56.3%
Students in informal education programmes <sup>3</sup>	na	1,521	786	618	538	-12.9%	na	96	55	35	29	-17.1%
<b>Domestic students enrolled in formal qualifications &gt; 0.03 EFTS<sup>1</sup></b>												
<b>Qualification level</b>												
Certificates 1-3	478	1,535	1,959	2,150	2,359	9.7%	257	775	985	1,017	1,194	17.4%
Certificates 4	72	562	761	862	1,005	16.6%	23	334	442	508	549	8.1%
Diplomas 5-7	261	592	688	846	880	4.0%	181	393	432	524	529	0.9%
Bachelors	549	971	1,056	1,242	1,313	5.7%	455	753	816	946	990	4.7%
Honours and postgraduate cert./dip.	35	72	102	104	105	1.0%	24	47	56	60	67	11.3%
Masters	28	42	46	65	65	0.0%	23	25	26	41	39	-5.3%
Doctorates	12	24	25	28	28	0.0%	11	19	25	28	29	3.6%
<b>Age group</b>												
Under 18 years	39	166	242	267	314	17.6%	25	104	166	170	194	14.4%
18 to 19 years	246	572	707	859	935	8.8%	204	468	598	710	765	7.7%
20 to 24 years	461	1,064	1,104	1,183	1,264	6.8%	371	785	821	859	923	7.4%
25 to 39 years	481	1,229	1,461	1,665	1,701	2.2%	294	738	829	944	973	3.0%
40 years and over	149	452	713	875	1,013	15.8%	81	251	370	441	543	23.1%
<b>Common fields of study</b>												
Agriculture, environmental and related studies	19	54	70	89	100	12.4%	12	15	17	23	27	15.7%
Architecture and building	37	142	231	211	272	28.9%	20	82	128	113	146	28.5%
Creative arts	29	428	562	686	664	-3.2%	24	156	179	224	203	-9.4%
Education	114	313	318	383	356	-7.0%	92	163	180	206	189	-8.2%
Engineering and related technologies	151	306	351	466	512	9.9%	77	139	154	168	195	16.5%
Food, hospitality and personal services	29	127	211	200	239	19.5%	15	69	100	106	125	17.4%
Health	67	425	631	624	610	-2.2%	47	151	199	212	232	9.2%
Information technology	41	501	513	656	749	14.2%	25	126	125	167	158	-5.3%
Management and commerce	371	1,346	1,678	1,987	2,337	17.6%	249	569	768	882	1,029	16.7%
Mixed field programmes	149	648	737	735	831	13.1%	83	173	189	174	190	9.1%
Natural and physical sciences	92	395	461	534	560	4.9%	73	126	134	156	173	10.4%
Society and culture	332	1,253	1,464	1,624	1,705	5.0%	258	577	614	693	730	5.5%
<b>Sub-sector</b>												
Universities	516	1,186	1,334	1,517	1,517	0.0%	431	911	1,029	1,160	1,185	2.2%
Institutes of technology and polytechnics	782	1,004	1,516	1,744	1,894	8.6%	461	561	745	831	925	11.4%
Colleges of education	90	119	14				76	71	10			
Wānanga	10	306	283	430	573	33.3%	6	180	140	205	289	40.9%
Public providers	1,376	2,549	3,083	3,609	3,895	7.9%	974	1,722	1,925	2,196	2,399	9.3%
Private training establishments	na	1,026	1,255	1,365	1,463	7.2%	na	624	859	929	998	7.4%
<b>Study type</b>												
Full-time full-year	708	1,452	1,724	1,884	2,001	6.2%	716	1,509	1,787	1,961	2,085	6.4%
Full-time part-year	214	746	873	970	994	2.5%	112	409	456	517	546	5.6%
Part-time full-year	263	550	724	748	786	5.1%	109	246	336	356	375	5.2%
Part-time part-year	191	735	906	1,247	1,446	16.0%	36	182	205	291	391	34.6%
<b>Female / Male</b>												
Female	721	2,029	2,533	2,864	2,993	4.5%	528	1,373	1,724	1,934	2,022	4.5%
Male	655	1,454	1,694	1,985	2,234	12.5%	446	973	1,060	1,190	1,375	15.5%
<b>Gaining qualifications and age-standardised participation rate</b>												
No. of students who completed a qualification	264	685	949	na	1,357							
Number of qualifications completed	276	735	1,027	na	1,504							

<sup>1</sup> Students enrolled at any time during the year with a tertiary education provider in formal qualifications of greater than 0.03 EFTS (more than one week's duration).

<sup>2</sup> Students enrolled at any time during the year with a tertiary education provider in formal qualifications of less than 0.03 EFTS (less than one week's duration).

<sup>3</sup> Students enrolled at any time during the year with a tertiary education provider in informal programmes, i.e. programmes not registered on the New Zealand Register of Quality Assured Qualifications.

Notes:

(1) The equivalent full-time student count used in this report does not equate to the funded equivalent full-time student count. The data is also not adjusted to allow for students who do not complete their study programme.

(2) The colleges of education have merged with nearby universities over the last decade.

(3) From 2003, the field of study data is based on courses studied. The 1998 data is based on qualifications and is therefore not directly comparable.

<b>Domestic female Tongan tertiary education students by selected characteristics</b>												
Type of qualification (domestic students)	Student enrolments						Equivalent full-time students					
	1998	2003	2006	2007	2008	Change 07-08	1998	2003	2006	2007	2008	Change 07-08
Students in formal qualifications > 0.03 EFTS <sup>1</sup>	721	2,029	2,533	2,864	2,993	4.5%	528	1,373	1,724	1,934	2,022	12.2%
Students in formal qualifications < 0.03 EFTS <sup>2</sup>	na	207	176	192	109	-43.2%	na	10	12	23	12	-47.8%
Students in informal education programmes <sup>3</sup>	na	603	464	346	290	-16.2%	na	52	32	21	17	-19.0%
<b>Domestic female Tongan students enrolled in formal qualifications &gt; 0.03 EFTS<sup>1</sup></b>												
<b>Qualification level</b>												
Certificates 1-3	235	874	1,114	1,175	1,304	11.0%	133	433	566	586	663	13.1%
Certificates 4	21	362	468	534	554	3.7%	5	219	281	330	326	-1.2%
Diplomas 5-7	130	313	421	502	506	0.8%	99	199	263	315	309	-1.8%
Bachelors	323	597	711	824	863	4.7%	264	463	549	632	647	2.3%
Honours and postgraduate cert./dip.	16	45	68	61	61	0.0%	11	31	35	32	36	11.0%
Masters	na	28	29	40	39	-2.5%	na	17	17	26	25	-6.3%
Doctorates	na	12	13	14	16	14.3%	na	10	14	13	18	32.5%
<b>Age group</b>												
Under 18 years	17	85	136	160	162	1.3%	11	53	89	104	111	7.2%
18 to 19 years	148	346	438	523	540	3.3%	129	288	385	444	456	2.9%
20 to 24 years	232	650	700	732	772	5.5%	190	474	533	543	577	6.2%
25 to 39 years	241	679	855	943	939	-0.4%	155	404	501	571	560	-2.0%
40 years and over	83	269	404	506	580	14.6%	43	154	216	273	319	16.6%
<b>Common fields of study</b>												
Agriculture, environmental and related studies	na	22	21	29	30	3.4%	na	5	4	9	8	-14.3%
Architecture and building	na	20	42	33	21	-36.4%	na	7	10	11	7	-39.7%
Creative arts	16	242	367	418	382	-8.6%	13	81	106	128	110	-13.9%
Education	91	235	260	311	284	-8.7%	74	133	152	176	160	-9.2%
Engineering and related technologies	13	46	67	103	111	7.8%	9	19	21	33	37	10.5%
Food, hospitality and personal services	14	85	158	147	171	16.3%	6	46	74	78	91	16.6%
Health	53	228	380	357	341	-4.5%	34	94	137	146	159	8.4%
Information technology	21	249	304	390	439	12.6%	15	50	68	88	77	-12.7%
Management and commerce	224	930	1,177	1,344	1,567	16.6%	151	422	575	640	729	14.0%
Mixed field programmes	62	414	518	509	566	11.2%	32	109	124	114	115	1.3%
Natural and physical sciences	41	190	267	310	310	0.0%	34	65	80	94	103	9.4%
Society and culture	200	759	931	999	1,018	1.9%	153	342	373	417	427	2.4%
<b>Sub-sector</b>												
Universities	278	719	888	973	973	0.0%	232	554	686	749	772	3.1%
Institutes of technology and polytechnics	379	505	749	846	848	0.2%	234	275	372	431	422	-2.1%
Colleges of education	na	92	12				na	56	9			
Wānanga	na	197	194	294	369	25.5%	na	111	98	147	187	27.2%
Public providers	721	1,469	1,798	2,056	2,132	3.7%	na	995	1,163	1,327	1,381	4.1%
Private training establishments	na	623	810	895	937	4.7%	na	378	561	607	641	5.6%
<b>Study type</b>												
Full-time full-year	407	833	1,087	1,184	1,201	1.4%	411	872	1,131	1,239	1,261	1.8%
Full-time part-year	84	410	504	551	543	-1.5%	43	231	276	301	312	3.5%
Part-time full-year	138	333	425	444	452	1.8%	59	151	198	227	223	-1.6%
Part-time part-year	92	453	517	685	797	16.4%	15	118	118	168	227	35.0%
<b>Gaining qualifications and age-standardised participation rate</b>												
No. of students who completed a qualification	161	429	586	na	859							
Number of qualifications completed	169	468	642	na	951							
<sup>1</sup> Students enrolled at any time during the year with a tertiary education provider in formal qualifications of greater than 0.03 EFTS (more than one week's duration). <sup>2</sup> Students enrolled at any time during the year with a tertiary education provider in formal qualifications of less than 0.03 EFTS (less than one week's duration). <sup>3</sup> Students enrolled at any time during the year with a tertiary education provider in informal programmes, i.e. programmes not registered on the New Zealand Register of Quality Assured Qualifications.												
Notes:												
(1) The equivalent full-time student count used in this report does not equate to the funded equivalent full-time student count. The data is also not adjusted to allow for students who do not complete their study programme.												
(2) The colleges of education have merged with nearby universities over the last decade.												
(3) From 2003, the field of study data is based on courses studied. The 1998 data is based on qualifications and is therefore not directly comparable.												

<b>Domestic male Tongan tertiary education students by selected characteristics</b>												
Type of qualification (domestic students)	Student enrolments						Equivalent full-time students					
	1998	2003	2006	2007	2008	Change 07-08	1998	2003	2006	2007	2008	Change 07-08
Students in formal qualifications > 0.03 EFTS <sup>1</sup>	655	1,454	1,694	1,985	2,234	12.5%	446	973	1,060	1,191	1,375	15.5%
Students in formal qualifications < 0.03 EFTS <sup>2</sup>	na	150	793	786	125	-84.1%	na	8	26	25	9	-64.0%
Students in informal education programmes <sup>3</sup>	na	918	322	272	248	-8.8%	na	44	23	14	12	-14.3%
<b>Domestic male Tongan students enrolled in formal qualifications &gt; 0.03 EFTS<sup>1</sup></b>												
<b>Qualification level</b>												
Certificates 1-3	243	661	845	975	1,055	8.2%	124	341	419	432	532	23.2%
Certificates 4	51	200	293	328	451	37.5%	18	116	162	178	223	25.4%
Diplomas 5-7	131	279	267	344	374	8.7%	82	194	170	209	220	5.0%
Bachelors	226	374	345	418	450	7.7%	190	289	267	314	343	9.4%
Honours and postgraduate cert./dip.	19	27	34	43	44	2.3%	13	16	21	28	31	11.7%
Masters	na	14	17	25	26	4.0%	na	7	9	15	15	-3.6%
Doctorates	na	12	12	14	12	-14.3%	na	9	12	15	12	-22.4%
<b>Age group</b>												
Under 18 years	22	81	106	107	152	42.1%	14	51	77	66	83	25.7%
18 to 19 years	98	226	269	336	395	17.6%	75	180	213	266	308	15.8%
20 to 24 years	229	414	404	451	492	9.1%	180	311	289	317	346	9.4%
25 to 39 years	240	550	606	722	762	5.5%	139	334	327	373	413	10.6%
40 years and over	66	183	309	369	433	17.3%	38	98	154	168	225	33.6%
<b>Common fields of study</b>												
Agriculture, environmental and related studies	na	32	49	60	70	16.7%	na	11	13	14	19	35.2%
Architecture and building	na	122	189	178	251	41.0%	na	75	118	102	139	35.9%
Creative arts	13	186	195	268	282	5.2%	11	75	74	96	93	-3.5%
Education	23	78	58	72	72	0.0%	17	30	28	30	29	-2.1%
Engineering and related technologies	138	260	284	363	401	10.5%	68	120	133	134	159	18.0%
Food, hospitality and personal services	15	42	53	53	68	28.3%	8	22	26	29	34	19.4%
Health	14	197	251	267	269	0.7%	13	57	62	66	73	11.1%
Information technology	20	252	209	266	310	16.5%	10	76	57	79	81	3.1%
Management and commerce	147	416	501	643	770	19.8%	97	147	193	243	300	23.7%
Mixed field programmes	87	234	219	226	265	17.3%	52	64	64	61	75	23.8%
Natural and physical sciences	51	205	194	224	250	11.6%	39	60	53	62	69	11.9%
Society and culture	132	494	533	625	687	9.9%	105	235	241	276	303	10.0%
<b>Sub-sector</b>												
Universities	238	467	446	544	544	0.0%	199	357	343	411	413	0.6%
Institutes of technology and polytechnics	403	499	767	898	1,046	16.5%	227	286	373	400	503	25.9%
Colleges of education	na	27	2				na	15	1			
Wānanga	na	109	89	136	204	50.0%	na	69	42	58	102	75.4%
Public providers	655	1,080	1,285	1,553	1,763	13.5%	446	727	762	869	1,018	17.3%
Private training establishments	na	403	445	470	526	2.5%	na	246	298	322	357	10.8%
<b>Study type</b>												
Full-time full-year	301	619	637	700	800	14.3%	306	637	655	722	825	14.2%
Full-time part-year	130	336	369	419	451	7.6%	69	178	179	216	234	8.5%
Part-time full-year	125	217	299	304	334	9.9%	50	95	139	130	152	17.1%
Part-time part-year	99	282	389	562	649	15.5%	22	64	87	123	165	34.0%
<b>Gaining qualifications and age-standardised participation rate</b>												
No. of students who completed a qualification	103	256	363	na	498							
Number of qualifications completed	107	267	385	na	553							
<sup>1</sup> Students enrolled at any time during the year with a tertiary education provider in formal qualifications of greater than 0.03 EFTS (more than one week's duration). <sup>2</sup> Students enrolled at any time during the year with a tertiary education provider in formal qualifications of less than 0.03 EFTS (less than one week's duration). <sup>3</sup> Students enrolled at any time during the year with a tertiary education provider in informal programmes, i.e. programmes not registered on the New Zealand Register of Quality Assured Qualifications.												
<b>Notes:</b> (1) The equivalent full-time student count used in this report does not equate to the funded equivalent full-time student count. The data is also not adjusted to allow for students who do not complete their study programme. (2) The colleges of education have merged with nearby universities over the last decade. (3) From 2003, the field of study data is based on courses studied. The 1998 data is based on qualifications and is therefore not directly comparable.												

<b>Domestic Fijian tertiary education students by selected characteristics</b>												
Type of qualification (domestic students)	Student enrolments						Equivalent full-time students					
	1998	2003	2006	2007	2008	Change 07-08	1998	2003	2006	2007	2008	Change 07-08
Students in formal qualifications > 0.03 EFTS <sup>1</sup>	825	2,200	2,940	3,189	3,261	2.3%	536	1,441	1,812	1,935	2,006	3.7%
Students in formal qualifications < 0.03 EFTS <sup>2</sup>	na	200	448	460	171	-62.8%	na	7	17	18	11	-38.9%
Students in informal education programmes <sup>3</sup>	na	784	509	429	446	4.0%	na	52	33	25	25	-0.6%
<b>Domestic students enrolled in formal qualifications &gt; 0.03 EFTS<sup>1</sup></b>												
<b>Qualification level</b>												
Certificates 1-3	237	751	997	991	1,010	1.9%	106	353	396	382	411	7.6%
Certificates 4	35	274	373	416	454	9.1%	9	142	193	198	212	7.1%
Diplomas 5-7	180	427	474	569	607	6.7%	103	245	251	300	307	2.3%
Bachelors	362	824	1,119	1,254	1,239	-1.2%	281	631	865	939	931	-0.9%
Postgraduate	48	116	178	213	244	14.6%	37	71	106	116	145	24.8%
<b>Age group</b>												
Under 18 years	23	74	77	105	107	1.9%	15	55	51	69	67	-1.9%
18 to 19 years	146	375	496	516	528	2.3%	122	323	436	437	447	2.3%
20 to 24 years	279	652	910	970	1,021	5.3%	222	501	680	739	768	4.0%
25 to 39 years	263	726	911	993	1,042	4.9%	132	388	426	457	489	7.0%
40 years and over	112	373	546	605	563	-6.9%	42	174	218	234	235	0.3%
<b>Common fields of study</b>												
Agriculture, environmental and related studies	10	36	67	76	70	-7.9%	6	9	18	19	20	5.1%
Architecture and building	29	94	183	129	127	-1.6%	12	28	46	47	62	31.1%
Creative arts	30	263	290	309	337	9.1%	25	74	90	100	109	8.7%
Education	47	256	227	255	302	18.4%	30	122	111	113	143	26.3%
Engineering and related technologies	92	255	389	418	452	8.1%	52	128	165	165	194	17.3%
Food, hospitality and personal services	29	72	102	108	105	-2.8%	16	35	39	56	47	-16.0%
Health	40	278	469	514	536	4.3%	30	118	190	208	221	6.1%
Information technology	47	417	376	428	423	-1.2%	30	128	94	123	111	-9.8%
Management and commerce	271	826	1,113	1,203	1,269	5.5%	151	312	425	471	510	8.4%
Mixed field programmes	44	293	376	289	300	3.8%	24	64	85	54	49	-8.1%
Natural and physical sciences	68	345	507	537	491	-8.6%	50	125	192	201	179	-10.9%
Society and culture	157	719	928	981	917	-6.5%	111	300	356	379	362	-4.2%
<b>Sub-sector</b>												
Universities	300	911	1,212	1,332	1,368	2.7%	243	684	936	1,009	1,036	2.7%
Institutes of technology and polytechnics	501	774	1,139	1,264	1,307	3.4%	272	388	511	519	556	7.1%
Colleges of education	24	67	10				16	48	5			
Wānanga	6	182	249	187	151	-19.3%	5	108	102	90	83	-7.8%
Public providers	825	1,885	2,572	2,729	2,787	2.1%	536	1,228	1,554	1,618	1,675	3.5%
Private training establishments	na	362	410	493	513	4.1%	na	212	257	317	331	4.3%
<b>Study type</b>												
Full-time full-year	371	987	1,210	1,268	1,296	2.2%	382	1,004	1,227	1,292	1,321	2.2%
Full-time part-year	97	327	405	469	472	0.6%	49	166	190	218	234	7.6%
Part-time full-year	212	433	628	639	685	7.2%	83	172	261	267	287	7.5%
Part-time part-year	145	453	697	813	808	-0.6%	23	98	134	159	164	3.7%
<b>Female / Male</b>												
Female	412	1,166	1,534	1,712	1,744	1.9%	283	775	996	1,078	1,124	4.3%
Male	413	1,034	1,406	1,477	1,517	2.7%	253	666	816	857	882	2.9%
<b>Gaining qualifications and age-standardised participation rate</b>												
No. of students who completed a qualification	171	449	605	na	747							
Number of qualifications completed	174	470	647	na	799							
<sup>1</sup> Students enrolled at any time during the year with a tertiary education provider in formal qualifications of greater than 0.03 EFTS (more than one week's duration). <sup>2</sup> Students enrolled at any time during the year with a tertiary education provider in formal qualifications of less than 0.03 EFTS (less than one week's duration). <sup>3</sup> Students enrolled at any time during the year with a tertiary education provider in informal programmes, i.e. programmes not registered on the New Zealand Register of Quality Assured Qualifications.												
<b>Notes:</b> (1) The equivalent full-time student count used in this report does not equate to the funded equivalent full-time student count. The data is also not adjusted to allow for students who do not complete their study programme. (2) The colleges of education have merged with nearby universities over the last decade. (3) From 2003, the field of study data is based on courses studied. The 1998 data is based on qualifications and is therefore not directly comparable.												

## Domestic female Fijian tertiary education students by selected characteristics

Type of qualification (domestic students)	Student enrolments						Equivalent full-time students					
	1998	2003	2006	2007	2008	Change 07-08	1998	2003	2006	2007	2008	Change 07-08
Students in formal qualifications > 0.03 EFTS <sup>1</sup>	412	1,166	1,534	1,712	1,744	1.9%	283	775	996	1,078	1,124	4.3%
Students in formal qualifications < 0.03 EFTS <sup>2</sup>	na	110	90	99	74	-25.3%	na	4	6	5	3	-40.0%
Students in informal education programmes <sup>3</sup>	na	311	238	189	204	7.9%	na	26	14	11	13	18.2%
Domestic students enrolled in formal qualifications > 0.03 EFTS <sup>1</sup>												
<b>Qualification level</b>												
Certificates 1-3	115	380	458	481	498	3.5%	53	173	175	207	213	2.9%
Certificates 4	15	157	189	219	217	-0.9%	5	96	113	114	106	-7.1%
Diplomas 5-7	75	198	252	286	310	8.4%	47	122	130	143	161	12.3%
Bachelors	203	456	650	752	767	2.0%	160	343	514	561	576	2.8%
Postgraduate	23	71	113	114	130	14.0%	18	41	63	53	68	29.3%
<b>Age group</b>												
Under 18 years	6	41	34	59	51	-13.6%	3	28	21	41	35	-14.9%
18 to 19 years	70	187	268	292	299	2.4%	62	161	247	251	257	2.7%
20 to 24 years	143	340	485	511	543	6.3%	118	255	370	395	418	5.9%
25 to 39 years	137	404	483	536	567	5.8%	78	231	236	253	283	11.7%
40 years and over	55	194	264	314	284	-9.6%	22	99	122	138	131	-5.2%
<b>Common fields of study</b>												
Agriculture, environmental and related studies	na	8	25	29	21	-27.6%	na	1	8	7	4	-38.9%
Architecture and building	na	30	59	37	20	-45.9%	na	6	8	9	11	16.1%
Creative arts	15	140	168	168	192	14.3%	13	41	58	60	64	6.2%
Education	37	176	182	195	220	12.8%	25	95	95	98	118	20.2%
Engineering and related technologies	9	24	40	52	46	-11.5%	8	9	9	13	15	13.2%
Food, hospitality and personal services	19	51	61	66	62	-6.1%	10	24	19	31	29	-6.4%
Health	34	193	294	333	359	7.8%	27	92	136	148	160	8.1%
Information technology	14	154	161	169	192	13.6%	11	39	35	36	41	15.1%
Management and commerce	141	454	587	682	727	6.6%	82	183	240	285	311	9.1%
Mixed field programmes	27	182	233	188	179	-4.8%	14	43	50	33	34	3.0%
Natural and physical sciences	26	157	265	278	269	-3.2%	18	66	113	117	110	-5.5%
Society and culture	108	411	567	603	562	-6.8%	73	176	224	242	228	-5.5%
<b>Sub-sector</b>												
Universities	154	486	709	777	818	5.3%	123	367	543	575	616	7.0%
Institutes of technology and polytechnics	237	351	483	572	588	2.8%	144	179	233	248	257	3.6%
Colleges of education	na	55	na				15	39	5			
Wānanga	na	120	136	113	85	-24.8%	1	69	58	58	50	-13.5%
Public providers	412	983	1,313	1,439	1,467	1.9%	283	654	839	882	923	4.7%
Private training establishments	na	209	246	296	299	1.0%	na	120	156	196	201	2.6%
<b>Study type</b>												
Full-time full-year	206	531	678	715	739	3.4%	211	541	692	728	756	3.9%
Full-time part-year	38	164	193	222	242	9.0%	22	85	97	114	132	15.3%
Part-time full-year	103	231	334	354	357	0.8%	40	95	142	152	152	0.0%
Part-time part-year	65	240	329	421	406	-3.6%	11	54	64	84	85	0.7%
<b>Gaining qualifications and age-standardised participation rate</b>												
No. of students who completed a qualification	106	279	346	na	437							
Number of qualifications completed	109	291	369	na	469							

<sup>1</sup> Students enrolled at any time during the year with a tertiary education provider in formal qualifications of greater than 0.03 EFTS (more than one week's duration).

<sup>2</sup> Students enrolled at any time during the year with a tertiary education provider in formal qualifications of less than 0.03 EFTS (less than one week's duration).

<sup>3</sup> Students enrolled at any time during the year with a tertiary education provider in informal programmes, i.e. programmes not registered on the New Zealand Register of Quality Assured Qualifications.

### Notes:

(1) The equivalent full-time student count used in this report does not equate to the funded equivalent full-time student count. The data is also not adjusted to allow for students who do not complete their study programme.

(2) The colleges of education have merged with nearby universities over the last decade.

(3) From 2003, the field of study data is based on courses studied. The 1998 data is based on qualifications and is therefore not directly comparable.

<b>Domestic male Fijian tertiary education students by selected characteristics</b>												
<b>Type of qualification (domestic students)</b>	<b>Student enrolments</b>						<b>Equivalent full-time students</b>					
	1998	2003	2006	2007	2008	Change 07-08	1998	2003	2006	2007	2008	Change 07-08
Students in formal qualifications > 0.03 EFTS <sup>1</sup>	413	1,034	1,406	1,477	1,517	2.7%	253	666	816	857	882	2.9%
Students in formal qualifications < 0.03 EFTS <sup>2</sup>	na	90	358	361	97	-73.1%	na	3	11	13	8	-38.5%
Students in informal education programmes <sup>3</sup>	na	473	271	240	242	0.8%	na	26	19	14	12	-15.4%
<b>Domestic students enrolled in formal qualifications &gt; 0.03 EFTS<sup>1</sup></b>												
<b>Qualification level</b>												
Certificates 1-3	122	371	539	510	512	0.4%	52	180	221	175	198	13.3%
Certificates 4	20	117	184	197	237	20.3%	4	46	80	84	106	26.5%
Diplomas 5-7	105	229	222	283	297	4.9%	56	123	121	157	146	-6.8%
Bachelors	159	368	469	502	472	-6.0%	121	288	351	378	355	-6.3%
Postgraduate	25	45	65	99	114	15.2%	19	29	44	63	77	21.0%
<b>Age group</b>												
Under 18 years	17	33	43	46	56	21.7%	12	26	31	28	33	17.2%
18 to 19 years	76	188	228	224	229	2.2%	61	162	189	186	189	1.8%
20 to 24 years	136	312	425	459	478	4.1%	105	246	310	344	350	1.8%
25 to 39 years	126	322	428	457	475	3.9%	54	157	191	204	206	1.1%
40 years and over	57	179	282	291	279	-4.1%	20	75	96	96	104	8.2%
<b>Common fields of study</b>												
Agriculture, environmental and related studies	na	28	42	47	49	4.3%	na	8	10	12	15	31.4%
Architecture and building	na	64	124	92	107	16.3%	na	22	38	38	52	34.7%
Creative arts	15	123	122	141	145	2.8%	13	33	32	40	45	12.5%
Education	10	80	45	60	82	36.7%	5	27	16	15	25	64.7%
Engineering and related technologies	83	231	349	366	406	10.9%	45	119	156	152	179	17.7%
Food, hospitality and personal services	10	21	41	42	43	2.4%	5	10	20	25	18	-27.8%
Health	6	85	175	181	177	-2.2%	3	26	54	60	61	1.4%
Information technology	33	263	215	259	231	-10.8%	18	88	58	88	70	-19.9%
Management and commerce	130	372	526	521	542	4.0%	69	128	185	186	199	7.4%
Mixed field programmes	17	111	143	101	121	19.8%	10	21	36	20	15	-26.5%
Natural and physical sciences	42	188	242	259	222	-14.3%	32	59	79	84	69	-18.3%
Society and culture	49	308	361	378	355	-6.1%	38	123	132	137	134	-2.0%
<b>Sub-sector</b>												
Universities	146	425	503	555	550	-0.9%	120	317	393	433	421	-2.9%
Institutes of technology and polytechnics	264	423	656	692	719	3.9%	128	209	278	270	298	10.2%
Colleges of education	na	12	na				na	9	na	na		
Wānanga	na	62	113	74	66	-10.8%	na	39	44	32	33	2.5%
Public providers	413	902	1,259	1,290	1,320	2.3%	253	574	715	736	752	2.1%
Private training establishments	na	153	164	197	214	8.6%	na	92	101	121	130	7.1%
<b>Study type</b>												
Full-time full-year	165	456	532	553	557	0.7%	171	463	535	565	565	0.0%
Full-time part-year	59	163	212	247	230	-6.9%	27	81	92	103	102	-1.0%
Part-time full-year	109	202	294	285	328	15.1%	43	77	119	115	135	17.4%
Part-time part-year	80	213	368	392	402	2.6%	12	45	70	74	79	7.1%
<b>Gaining qualifications and age-standardised participation rate</b>												
No. of students who completed a qualification	65	170	259	na	310							
Number of qualifications completed	65	179	278	na	330							

<sup>1</sup> Students enrolled at any time during the year with a tertiary education provider in formal qualifications of greater than 0.03 EFTS (more than one week's duration).

<sup>2</sup> Students enrolled at any time during the year with a tertiary education provider in formal qualifications of less than 0.03 EFTS (less than one week's duration).

<sup>3</sup> Students enrolled at any time during the year with a tertiary education provider in informal programmes, i.e. programmes not registered on the New Zealand Register of Quality Assured Qualifications.

Notes:

(1) The equivalent full-time student count used in this report does not equate to the funded equivalent full-time student count. The data is also not adjusted to allow for students who do not complete their study programme.

(2) The colleges of education have merged with nearby universities over the last decade.

(3) From 2003, the field of study data is based on courses studied. The 1998 data is based on qualifications and is therefore not directly comparable.

<b>Domestic Niuean tertiary education students by selected characteristics</b>												
Type of qualification (domestic students)	Student enrolments						Equivalent full-time students					
	1998	2003	2006	2007	2008	Change 07-08	1998	2003	2006	2007	2008	Change 07-08
Students in formal qualifications > 0.03 EFTS <sup>1</sup>	733	1,847	1,953	2,110	2,096	-0.7%	468	1,143	1,203	1,268	1,218	-3.9%
Students in formal qualifications < 0.03 EFTS <sup>2</sup>	na	186	365	369	107	-71.0%	na	9	14	17	9	-47.1%
Students in informal education programmes <sup>3</sup>	na	655	262	252	221	-12.3%	na	40	16	17	14	-17.6%
Domestic Niuean students enrolled in formal qualifications > 0.03 EFTS <sup>1</sup>												
<b>Qualification level</b>												
Certificates 1-3	276	910	966	1,033	981	-5.0%	132	427	438	486	434	-10.7%
Certificates 4	36	316	331	343	387	12.8%	9	190	189	196	209	6.5%
Diplomas 5-7	148	310	316	342	343	0.3%	89	181	198	193	188	-2.5%
Bachelors	268	426	459	486	491	1.0%	212	314	337	357	355	-0.5%
Postgraduate	37	47	66	66	63	-4.5%	26	31	41	36	32	-11.0%
<b>Age group</b>												
Under 18 years	21	111	155	142	162	14.1%	15	79	106	90	98	8.7%
18 to 19 years	115	281	327	360	366	1.7%	91	215	254	268	275	2.6%
20 to 24 years	228	481	451	488	481	-1.4%	176	339	312	330	317	-3.7%
25 to 39 years	276	702	681	679	643	-5.3%	140	366	357	369	323	-12.5%
40 years and over	93	272	339	441	444	0.7%	46	145	174	211	205	-2.7%
<b>Common fields of study</b>												
Agriculture, environmental and related studies	9	35	52	49	46	-6.1%	4	9	17	13	14	10.3%
Architecture and building	24	68	82	74	84	13.5%	14	38	48	39	42	8.5%
Creative arts	24	232	245	249	232	-6.8%	18	103	93	91	90	-0.8%
Education	67	229	214	220	214	-2.7%	44	125	119	118	108	-8.0%
Engineering and related technologies	82	135	142	200	181	-9.5%	37	63	50	65	52	-20.8%
Food, hospitality and personal services	18	104	143	161	147	-8.7%	9	57	80	82	77	-6.5%
Health	49	216	292	268	247	-7.8%	35	71	92	91	92	0.6%
Information technology	20	236	232	260	255	-1.9%	11	52	48	55	52	-5.6%
Management and commerce	165	643	733	817	898	9.9%	96	239	302	346	351	1.5%
Mixed field programmes	68	453	347	338	330	-2.4%	39	115	68	67	59	-11.8%
Natural and physical sciences	49	154	164	151	145	-4.0%	35	38	48	42	39	-7.3%
Society and culture	182	569	587	610	578	-5.2%	126	234	238	257	241	-6.4%
<b>Sub-sector</b>												
Universities	217	432	539	561	542	-3.4%	176	315	403	405	399	-1.4%
Institutes of technology and polytechnics	457	564	677	757	756	-0.1%	246	289	300	331	298	-9.9%
Colleges of education	55	119	12				39	72	6			
Wānanga	10	307	227	260	260	0.0%	6	171	116	148	155	4.7%
Public providers	733	1,372	1,419	1,548	1,537	-0.7%	468	846	824	883	852	-3.6%
Private training establishments	na	517	591	611	605	-1.0%	na	297	378	384	366	-4.6%
<b>Study type</b>												
Full-time full-year	317	676	711	750	684	-8.8%	321	698	724	765	707	-7.5%
Full-time part-year	109	326	354	380	333	-12.4%	56	176	195	186	174	-6.2%
Part-time full-year	191	361	401	393	407	3.6%	69	159	175	173	174	0.8%
Part-time part-year	116	484	487	587	672	14.5%	21	111	108	144	163	12.8%
<b>Female / Male</b>												
Female	406	1,154	1,203	1,256	1,281	2.0%	270	713	743	787	758	-3.7%
Male	327	693	750	854	815	-4.6%	197	430	459	481	460	-4.4%
<b>Gaining qualifications and age-standardised participation rate</b>												
No. of students who completed a qualification	179	364	415	na	510							
Number of qualifications completed	189	388	448	na	542							
Notes:												
(1) The equivalent full-time student count used in this report does not equate to the funded equivalent full-time student count. The data is also not adjusted to allow for students who do not complete their study programme.												
(2) The colleges of education have merged with nearby universities over the last decade.												
(3) From 2003, the field of study data is based on courses studied. The 1998 data is based on qualifications and is therefore not directly comparable.												

<b>Domestic female Niuean tertiary education students by selected characteristics</b>												
Type of qualification (domestic students)	Student enrolments						Equivalent full-time students					
	1998	2003	2006	2007	2008	Change 07-08	1998	2003	2006	2007	2008	Change 07-08
Students in formal qualifications > 0.03 EFTS <sup>1</sup>	406	1,154	1,203	1,256	1,281	2.0%	270	713	743	787	758	-3.7%
Students in formal qualifications < 0.03 EFTS <sup>2</sup>	na	94	95	74	51	-31.1%	na	3	4	8	4	-50.0%
Students in informal education programmes <sup>3</sup>	na	292	177	151	131	-13.2%	na	25	11	10	7	-30.0%
<b>Domestic female Niuean students enrolled in formal qualifications &gt; 0.03 EFTS<sup>1</sup></b>												
<b>Qualification level</b>												
Certificates 1-3	129	570	584	573	586	2.3%	66	258	266	283	259	-8.5%
Certificates 4	22	201	211	211	220	4.3%	7	121	115	124	123	-0.8%
Diplomas 5-7	87	199	194	217	229	5.5%	56	111	120	124	129	4.0%
Bachelors	161	274	292	316	319	0.9%	124	204	221	233	225	-3.7%
Postgraduate	24	28	38	47	43	-8.5%	17	19	22	23	23	0.0%
<b>Age group</b>												
Under 18 years	11	57	88	78	77	-1.3%	8	40	65	53	53	1.0%
18 to 19 years	68	163	188	208	222	6.7%	58	127	143	165	170	2.6%
20 to 24 years	125	291	269	302	287	-5.0%	98	205	185	203	191	-5.9%
25 to 39 years	142	453	420	397	399	0.5%	74	237	226	223	202	-9.6%
40 years and over	60	190	238	271	296	9.2%	32	105	125	142	142	-0.2%
<b>Common fields of study</b>												
Agriculture, environmental and related studies	na	15	12	10	19	90.0%	na	4	3	3	6	155.0%
Architecture and building	na	10	17	7	10	42.9%	na	4	7	5	5	0.7%
Creative arts	9	134	131	142	132	-7.0%	6	51	42	43	47	8.8%
Education	55	181	172	175	169	-3.4%	35	100	101	98	89	-8.7%
Engineering and related technologies	9	25	24	39	42	7.7%	5	11	8	12	9	-22.9%
Food, hospitality and personal services	11	73	99	117	105	-10.3%	6	39	55	62	54	-12.5%
Health	35	139	175	157	148	-5.7%	23	56	65	68	64	-5.6%
Information technology	9	134	155	150	154	2.7%	6	25	28	30	29	-3.3%
Management and commerce	101	441	507	551	612	11.1%	59	171	212	244	245	0.2%
Mixed field programmes	36	330	244	228	220	-3.5%	21	82	43	42	37	-12.7%
Natural and physical sciences	25	76	98	87	81	-6.9%	19	22	30	27	24	-12.3%
Society and culture	121	352	377	378	360	-4.8%	86	148	149	154	149	-3.1%
<b>Sub-sector</b>												
Universities	127	262	343	357	345	-3.4%	103	195	263	258	257	-0.2%
Institutes of technology and polytechnics	237	319	348	361	392	8.6%	135	161	153	167	151	-9.5%
Colleges of education	44	89	10				30	53	5			
Wānanga	3	212	164	173	181	4.6%	2	117	81	102	107	4.3%
Public providers	406	842	843	871	904	3.8%	270	526	502	527	515	-2.3%
Private training establishments	na	339	397	415	411	-1.0%	na	187	242	260	243	-6.5%
<b>Study type</b>												
Full-time full-year	187	420	438	467	438	-6.2%	190	434	444	479	452	-5.6%
Full-time part-year	55	175	197	200	183	-8.5%	30	97	114	106	99	-7.2%
Part-time full-year	99	233	256	249	256	2.8%	39	104	111	112	110	-1.2%
Part-time part-year	65	326	312	340	404	18.8%	11	79	75	89	97	8.1%
<b>Gaining qualifications and age-standardised participation rate</b>												
No. of students who completed a qualification	112	247	283	na	333							
Number of qualifications completed	120	263	308	na	356							
<sup>1</sup> Students enrolled at any time during the year with a tertiary education provider in formal qualifications of greater than 0.03 EFTS (more than one week's duration). <sup>2</sup> Students enrolled at any time during the year with a tertiary education provider in formal qualifications of less than 0.03 EFTS (less than one week's duration). <sup>3</sup> Students enrolled at any time during the year with a tertiary education provider in informal programmes, i.e. programmes not registered on the New Zealand Register of Quality Assured Qualifications.												
Notes:												
(1) The equivalent full-time student count used in this report does not equate to the funded equivalent full-time student count. The data is also not adjusted to allow for students who do not complete their study programme.												
(2) The colleges of education have merged with nearby universities over the last decade.												
(3) From 2003, the field of study data is based on courses studied. The 1998 data is based on qualifications and is therefore not directly comparable.												

<b>Domestic male Niuean tertiary education students by selected characteristics</b>												
Type of qualification (domestic students)	Student enrolments						Equivalent full-time students					
	1998	2003	2006	2007	2008	Change 07-08	1998	2003	2006	2007	2008	Change 07-08
Students in formal qualifications > 0.03 EFTS <sup>1</sup>	327	693	750	854	815	-4.6%	198	430	460	481	460	-4.3%
Students in formal qualifications < 0.03 EFTS <sup>2</sup>	na	92	270	295	56	-81.0%	na	6	10	9	5	-44.4%
Students in informal education programmes <sup>3</sup>	na	363	85	101	90	-10.9%	na	15	5	7	7	0.0%
<b>Domestic male Niuean students enrolled in formal qualifications &gt; 0.03 EFTS<sup>1</sup></b>												
<b>Qualification level</b>												
Certificates 1-3	147	340	382	460	395	-14.1%	66	168	173	203	175	-13.8%
Certificates 4	14	115	120	132	167	26.5%	2	69	74	72	86	19.1%
Diplomas 5-7	61	111	122	125	114	-8.8%	33	70	77	70	60	-14.1%
Bachelors	107	152	167	170	172	1.2%	88	110	116	124	131	5.7%
Postgraduate	13	19	28	19	20	5.3%	9	13	20	13	9	-30.4%
<b>Age group</b>												
Under 18 years	10	54	67	64	85	32.8%	6	39	41	37	45	19.5%
18 to 19 years	47	118	139	152	144	-5.3%	33	88	112	102	105	2.5%
20 to 24 years	103	190	182	186	194	4.3%	79	135	126	126	126	-0.2%
25 to 39 years	134	249	261	282	244	-13.5%	66	129	131	146	122	-16.9%
40 years and over	33	82	101	170	148	-12.9%	13	40	50	68	63	-7.8%
<b>Common fields of study</b>												
Agriculture, environmental and related studies	na	20	40	39	27	-30.8%	na	5	13	11	8	-24.2%
Architecture and building	na	58	65	67	74	10.4%	na	34	41	33	37	9.8%
Creative arts	15	98	114	107	100	-6.5%	12	53	50	48	43	-9.4%
Education	12	48	42	45	45	0.0%	9	26	18	20	19	-4.8%
Engineering and related technologies	73	110	118	161	139	-13.7%	32	52	42	54	43	-20.3%
Food, hospitality and personal services	7	31	44	44	42	-4.5%	3	18	25	20	23	11.8%
Health	14	77	117	111	99	-10.8%	11	15	27	23	28	18.7%
Information technology	11	102	77	110	101	-8.2%	6	27	20	26	24	-8.3%
Management and commerce	64	202	226	266	286	7.5%	37	68	90	102	106	4.4%
Mixed field programmes	32	123	103	110	110	0.0%	17	33	25	25	22	-10.3%
Natural and physical sciences	24	78	66	64	64	0.0%	16	16	18	15	15	1.6%
Society and culture	61	217	210	232	218	-6.0%	40	86	90	104	92	-11.2%
<b>Sub-sector</b>												
Universities	90	170	196	204	197	-3.4%	73	120	139	147	142	-3.5%
Institutes of technology and polytechnics	220	245	329	396	364	-8.1%	111	128	146	164	147	-10.3%
Colleges of education	11	30	2				9	20	1			
Wānanga	7	95	63	87	79	-9.2%	4	54	36	45	48	5.5%
Public providers	327	530	576	677	633	-6.5%	197	320	323	357	337	-5.5%
Private training establishments	na	178	194	196	194	-1.0%	na	110	136	124	123	-0.8%
<b>Study type</b>												
Full-time full-year	130	256	273	283	246	-13.1%	132	264	280	285	255	-10.7%
Full-time part-year	54	151	157	180	150	-16.7%	27	80	81	80	76	-4.9%
Part-time full-year	92	128	145	144	151	4.9%	30	55	64	61	64	4.4%
Part-time part-year	51	158	175	247	268	8.5%	9	32	34	55	66	20.5%
<b>Gaining qualifications and age-standardised participation rate</b>												
No. of students who completed a qualification	67	117	132	na	177							
Number of qualifications completed	69	125	140	na	186							
<sup>1</sup> Students enrolled at any time during the year with a tertiary education provider in formal qualifications of greater than 0.03 EFTS (more than one week's duration). <sup>2</sup> Students enrolled at any time during the year with a tertiary education provider in formal qualifications of less than 0.03 EFTS (less than one week's duration). <sup>3</sup> Students enrolled at any time during the year with a tertiary education provider in informal programmes, i.e. programmes not registered on the New Zealand Register of Quality Assured Qualifications.												
<b>Notes:</b> (1) The equivalent full-time student count used in this report does not equate to the funded equivalent full-time student count. The data is also not adjusted to allow for students who do not complete their study programme. (2) The colleges of education have merged with nearby universities over the last decade. (3) From 2003, the field of study data is based on courses studied. The 1998 data is based on qualifications and is therefore not directly comparable.												

<b>Domestic Tokelauan tertiary education students by selected characteristics</b>												
Type of qualification (domestic students)	Student enrolments						Equivalent full-time students					
	1998	2003	2006	2007	2008	Change 07-08	1998	2003	2006	2007	2008	Change 07-08
Students in formal qualifications > 0.03 EFTS <sup>1</sup>	320	665	703	756	693	-8.3%	230	436	433	465	415	-10.8%
Students in formal qualifications < 0.03 EFTS <sup>2</sup>	na	96	140	172	58	-66.3%	na	6	10	13	10	-23.1%
Students in informal education programmes <sup>3</sup>	na	241	121	114	89	-21.9%	na	19	8	8	5	-37.5%
<b>Domestic Tokelauan students enrolled in formal qualifications &gt; 0.03 EFTS<sup>1</sup></b>												
<b>Qualification level</b>												
Certificates 1-3	138	370	352	392	328	-16.3%	87	198	169	186	159	-14.5%
Certificates 4	18	81	110	113	110	-2.7%	7	48	62	61	57	-6.0%
Diplomas 5-7	58	96	94	93	89	-4.3%	40	64	58	53	50	-6.0%
Bachelors	109	147	164	190	195	2.6%	91	116	131	153	136	-11.3%
Postgraduate	5	16	26	20	22	10.0%	4	10	13	12	13	8.3%
<b>Age group</b>												
Under 18 years	na	28	46	50	36	-28.0%	na	18	24	31	22	-29.3%
18 to 19 years	57	93	114	126	103	-18.3%	47	77	85	101	83	-17.3%
20 to 24 years	85	174	166	185	159	-14.1%	68	128	121	124	110	-10.8%
25 to 39 years	143	288	264	260	263	1.2%	98	167	151	139	130	-6.1%
40 years and over	na	82	113	135	132	-2.2%	na	46	50	71	69	-2.5%
<b>Common fields of study</b>												
Agriculture, environmental and related studies	na	10	23	22	14	-36.4%	na	2	4	4	5	18.3%
Architecture and building	na	20	29	28	28	0.0%	na	11	16	14	13	-8.9%
Creative arts	15	107	98	93	93	0.0%	13	35	34	30	39	27.4%
Education	32	74	74	76	67	-11.8%	27	47	41	43	34	-21.0%
Engineering and related technologies	33	72	77	80	78	-2.5%	18	29	29	32	33	4.2%
Food, hospitality and personal services	13	34	47	46	39	-15.2%	9	16	20	24	19	-19.3%
Health	23	126	138	127	103	-18.9%	19	38	48	55	50	-9.6%
Information technology	29	94	84	82	79	-3.7%	18	21	19	16	18	13.9%
Management and commerce	51	254	248	299	261	-12.7%	30	81	98	108	90	-16.4%
Mixed field programmes	36	145	104	93	91	-2.2%	24	36	25	19	13	-32.1%
Natural and physical sciences	9	88	57	55	62	12.7%	7	22	19	19	18	-4.6%
Society and culture	81	239	206	263	235	-10.6%	61	97	79	100	83	-17.6%
<b>Sub-sector</b>												
Universities	84	141	171	176	169	-4.0%	69	110	122	135	115	-14.9%
Institutes of technology and polytechnics	222	273	323	370	333	-10.0%	147	170	163	195	178	-8.5%
Colleges of education	15	21	4				13	16	3			
Wānanga	na	99	57	73	74	1.4%	na	57	35	40	41	3.7%
Public providers	320	519	544	611	567	-7.2%	230	353	323	369	334	-9.5%
Private training establishments	na	156	175	158	137	-13.3%	na	83	110	96	81	-15.5%
<b>Study type</b>												
Full-time full-year	159	271	264	283	244	-13.8%	164	279	272	291	247	-15.2%
Full-time part-year	51	128	136	146	109	-25.3%	31	70	66	73	58	-20.7%
Part-time full-year	73	116	121	121	131	8.3%	28	48	54	51	53	4.5%
Part-time part-year	37	150	182	206	209	1.5%	7	39	40	50	57	13.9%
<b>Female / Male</b>												
Female	167	396	425	451	412	-8.6%	123	270	271	290	261	-9.9%
Male	153	269	278	305	281	-7.9%	106	166	162	175	154	-12.2%
<b>Gaining qualifications and age-standardised participation rate</b>												
No. of students who completed a qualification	79	123	150	na	129							
Number of qualifications completed	83	132	158	na	136							
<sup>1</sup> Students enrolled at any time during the year with a tertiary education provider in formal qualifications of greater than 0.03 EFTS (more than one week's duration). <sup>2</sup> Students enrolled at any time during the year with a tertiary education provider in formal qualifications of less than 0.03 EFTS (less than one week's duration). <sup>3</sup> Students enrolled at any time during the year with a tertiary education provider in informal programmes, i.e. programmes not registered on the New Zealand Register of Quality Assured Qualifications.												
Notes:												
(1) The equivalent full-time student count used in this report does not equate to the funded equivalent full-time student count. The data is also not adjusted to allow for students who do not complete their study programme.												
(2) The colleges of education have merged with nearby universities over the last decade.												
(3) From 2003, the field of study data is based on courses studied. The 1998 data is based on qualifications and is therefore not directly comparable.												

<b>Domestic female Tokelauan tertiary education students by selected characteristics</b>												
Type of qualification (domestic students)	Student enrolments						Equivalent full-time students					
	1998	2003	2006	2007	2008	Change 07-08	1998	2003	2006	2007	2008	Change 07-08
Students in formal qualifications > 0.03 EFTS <sup>1</sup>	167	396	425	451	412	-8.6%	123	270	271	290	261	-10.0%
Students in formal qualifications < 0.03 EFTS <sup>2</sup>	na	49	40	51	35	-31.4%	na	3	6	8	9	12.5%
Students in informal education programmes <sup>3</sup>	na	112	87	77	62	-19.5%	na	13	6	6	3	-50.0%
<b>Domestic female Tokelauan students enrolled in formal qualifications &gt; 0.03 EFTS<sup>1</sup></b>												
<b>Qualification level</b>												
Certificates 1-3	69	215	196	216	184	-14.8%	44	119	99	107	92	-13.4%
Certificates 4	na	48	54	65	52	-20.0%	na	29	31	38	29	-23.3%
Diplomas 5-7	28	56	65	61	59	-3.3%	21	41	39	32	34	7.9%
Bachelors	65	97	116	131	138	5.3%	55	75	94	105	99	-5.5%
Postgraduate	na	9	17	14	13	-7.1%	na	6	8	8	6	-27.7%
<b>Age group</b>												
Under 18 years	na	14	27	25	13	-48.0%	na	9	14	15	9	-41.0%
18 to 19 years	31	65	66	69	59	-14.5%	26	54	49	57	50	-12.2%
20 to 24 years	46	97	104	122	99	-18.9%	40	79	77	82	74	-10.7%
25 to 39 years	73	172	153	155	166	7.1%	48	101	93	87	85	-2.6%
40 years and over	na	48	75	80	75	-6.3%	na	27	38	48	44	-9.1%
<b>Common fields of study</b>												
Agriculture, environmental and related studies	na	na	na	na	na		na	na	na	na	na	
Architecture and building	na	na	na	na	na		na	na	na	na	na	
Creative arts	7	67	55	61	61	0.0%	5	19	16	17	21	22.3%
Education	24	58	62	68	58	-14.7%	21	38	36	39	30	-22.6%
Engineering and related technologies	na	17	15	13	14	7.7%	na	4	3	4	6	42.2%
Food, hospitality and personal services	6	24	36	29	28	-3.4%	3	13	14	14	13	-7.9%
Health	18	76	81	75	64	-14.7%	15	28	38	40	39	-2.3%
Information technology	14	59	50	51	50	-2.0%	7	12	9	7	10	37.1%
Management and commerce	28	178	162	206	183	-11.2%	17	60	69	81	68	-16.6%
Mixed field programmes	21	96	72	57	48	-15.8%	14	24	16	11	5	-55.0%
Natural and physical sciences	5	56	34	33	36	9.1%	5	13	13	14	12	-14.6%
Society and culture	50	153	141	172	157	-8.7%	36	58	54	59	55	-7.0%
<b>Sub-sector</b>												
Universities	47	90	116	114	110	-3.5%	39	69	82	88	75	-14.1%
Institutes of technology and polytechnics	111	168	166	190	170	-10.5%	77	111	90	107	103	-3.9%
Colleges of education	10	16	4				8	12	3			
Wānanga	na	58	39	57	54	-5.3%	na	34	24	32	31	-5.3%
Public providers	167	319	317	355	330	-7.0%	123	227	199	227	209	-8.1%
Private training establishments	na	83	116	105	90	-14.3%	na	43	72	63	52	-16.5%
<b>Study type</b>												
Full-time full-year	87	177	164	176	159	-9.7%	89	184	170	182	163	-10.2%
Full-time part-year	26	61	76	84	61	-27.4%	17	35	41	44	33	-25.2%
Part-time full-year	34	63	78	82	77	-6.1%	14	27	35	36	34	-6.3%
Part-time part-year	20	95	107	109	115	5.5%	3	24	26	28	31	11.3%
<b>Gaining qualifications and age-standardised participation rate</b>												
No. of students who completed a qualification	38	76	87	na	80							
Number of qualifications completed	41	84	91	na	85							

<sup>1</sup> Students enrolled at any time during the year with a tertiary education provider in formal qualifications of greater than 0.03 EFTS (more than one week's duration).

<sup>2</sup> Students enrolled at any time during the year with a tertiary education provider in formal qualifications of less than 0.03 EFTS (less than one week's duration).

<sup>3</sup> Students enrolled at any time during the year with a tertiary education provider in informal programmes, i.e. programmes not registered on the New Zealand Register of Quality Assured Qualifications.

Notes:

(1) The equivalent full-time student count used in this report does not equate to the funded equivalent full-time student count. The data is also not adjusted to allow for students who do not complete their study programme.

(2) The colleges of education have merged with nearby universities over the last decade.

(3) From 2003, the field of study data is based on courses studied. The 1998 data is based on qualifications and is therefore not directly comparable.

<b>Domestic male Tokelauan tertiary education students by selected characteristics</b>												
Type of qualification (domestic students)	Student enrolments						Equivalent full-time students					
	1998	2003	2006	2007	2008	Change 07-08	1998	2003	2006	2007	2008	Change 07-08
Students in formal qualifications > 0.03 EFTS <sup>1</sup>	153	269	278	305	281	-7.9%	107	166	162	175	154	-12.0%
Students in formal qualifications < 0.03 EFTS <sup>2</sup>	na	47	100	121	23	-81.0%	na	3	4	5	1	-80.0%
Students in informal education programmes <sup>3</sup>	na	129	34	37	27	-27.0%	na	6	2	2	2	0.0%
<b>Domestic male Tokelauan students enrolled in formal qualifications &gt; 0.03 EFTS<sup>1</sup></b>												
<b>Qualification level</b>												
Certificates 1-3	69	155	156	176	144	-18.2%	43	78	71	80	67	-15.9%
Certificates 4	na	33	56	48	58	20.8%	na	19	30	23	28	22.7%
Diplomas 5-7	30	40	29	32	30	-6.3%	20	24	18	21	15	-27.0%
Bachelors	44	50	48	59	57	-3.4%	36	41	37	48	36	-24.1%
Postgraduate	na	7	9	6	9	50.0%	na	4	5	4	7	86.6%
<b>Age group</b>												
Under 18 years	na	14	19	25	23	-8.0%	na	9	10	16	13	-18.0%
18 to 19 years	26	28	48	57	44	-22.8%	21	22	36	44	33	-23.9%
20 to 24 years	39	77	62	63	60	-4.8%	28	49	44	41	37	-11.0%
25 to 39 years	70	116	111	105	97	-7.6%	49	66	59	52	45	-12.0%
40 years and over	na	34	38	55	57	3.6%	na	20	12	23	25	11.6%
<b>Common fields of study</b>												
Agriculture, environmental and related studies	na	na	na	na	na		na	na	na	na	na	
Architecture and building	na	na	na	na	na		na	na	na	na	na	
Creative arts	8	40	43	32	32	0.0%	na	17	18	13	18	34.0%
Education	8	16	12	8	9	12.5%	7	9	4	4	4	-6.1%
Engineering and related technologies	na	55	62	67	64	-4.5%	na	25	25	28	28	-1.3%
Food, hospitality and personal services	7	10	11	17	11	-35.3%	6	3	6	10	7	-34.6%
Health	5	50	57	52	39	-25.0%	4	10	10	15	11	-28.6%
Information technology	15	35	34	31	29	-6.5%	11	9	11	9	8	-5.0%
Management and commerce	23	76	86	93	78	-16.1%	13	21	29	27	23	-15.7%
Mixed field programmes	15	49	32	36	43	19.4%	10	12	9	8	8	1.0%
Natural and physical sciences	na	32	23	22	26	18.2%	na	9	6	5	6	25.3%
Society and culture	31	86	65	91	78	-14.3%	25	39	25	41	27	-33.1%
<b>Sub-sector</b>												
Universities	37	51	55	62	59	-4.8%	30	40	40	47	39	-16.3%
Institutes of technology and polytechnics	111	105	157	180	163	-9.4%	71	59	73	88	75	-14.0%
Colleges of education	5	5					5	4				
Wānanga	na	41	18	16	20	25.0%	na	23	11	7	10	44.5%
Public providers	153	200	227	256	237	-7.4%	107	126	124	142	125	-11.9%
Private training establishments	na	73	59	53	47	-11.3%	na	40	38	33	29	-13.7%
<b>Study type</b>												
Full-time full-year	72	94	100	107	85	-20.6%	75	95	103	109	84	-23.5%
Full-time part-year	25	67	60	62	48	-22.6%	14	35	26	29	25	-13.9%
Part-time full-year	39	53	43	39	54	38.5%	14	22	19	15	19	30.7%
Part-time part-year	17	55	75	97	94	-3.1%	4	15	14	22	26	17.4%
<b>Gaining qualifications and age-standardised participation rate</b>												
No. of students who completed a qualification	41	47	63	na	49							
Number of qualifications completed	42	48	67	na	51							
<p><sup>1</sup> Students enrolled at any time during the year with a tertiary education provider in formal qualifications of greater than 0.03 EFTS (more than one week's duration).</p> <p><sup>2</sup> Students enrolled at any time during the year with a tertiary education provider in formal qualifications of less than 0.03 EFTS (less than one week's duration).</p> <p><sup>3</sup> Students enrolled at any time during the year with a tertiary education provider in informal programmes, i.e. programmes not registered on the New Zealand Register of Quality Assured Qualifications.</p> <p>Notes:</p> <p>(1) The equivalent full-time student count used in this report does not equate to the funded equivalent full-time student count. The data is also not adjusted to allow for students who do not complete their study programme.</p> <p>(2) The colleges of education have merged with nearby universities over the last decade.</p> <p>(3) From 2003, the field of study data is based on courses studied. The 1998 data is based on qualifications and is therefore not directly comparable.</p>												

<b>Domestic Other Pasifika tertiary education students by selected characteristics</b>												
Type of qualification (domestic students)	Student enrolments						Equivalent full-time students					
	1998	2003	2006	2007	2008	Change 07-08	1998	2003	2006	2007	2008	Change 07-08
Students in formal qualifications > 0.03 EFTS <sup>1</sup>	324	796	1,012	1,082	1,118	3.3%	210	511	605	650	682	4.9%
Students in formal qualifications < 0.03 EFTS <sup>2</sup>	na	117	167	187	81	-56.7%	na	6	6	7	5	-28.6%
Students in informal education programmes <sup>3</sup>	na	995	269	266	199	-25.2%	na	57	16	15	11	-26.7%
<b>Domestic Other Pasifika students enrolled in formal qualifications &gt; 0.03 EFTS<sup>1</sup></b>												
<b>Qualification level</b>												
Certificates 1-3	94	289	348	409	357	-12.7%	41	132	138	170	147	-13.8%
Certificates 4	12	95	159	153	158	3.3%	6	54	86	74	88	18.7%
Diplomas 5-7	69	124	148	161	174	8.1%	40	76	79	88	82	-6.1%
Bachelors	132	282	333	362	393	8.6%	105	210	243	268	299	11.8%
Postgraduate	28	53	94	76	100	31.6%	19	40	59	50	66	30.3%
<b>Age group</b>												
Under 18 years	6	33	31	35	25	-28.6%	4	23	21	23	13	-45.4%
18 to 19 years	42	86	142	157	159	1.3%	37	69	112	130	134	3.0%
20 to 24 years	115	203	223	241	259	7.5%	84	157	161	174	197	13.1%
25 to 39 years	121	340	415	404	414	2.5%	63	198	219	206	205	-0.5%
40 years and over	40	134	201	245	261	6.5%	22	63	92	116	133	14.4%
<b>Common fields of study</b>												
Agriculture, environmental and related studies	11	21	37	32	31	-3.1%	6	6	9	9	6	-29.7%
Architecture and building	na	35	32	27	36	33.3%	na	15	16	15	16	7.5%
Creative arts	14	99	113	125	129	3.2%	12	34	46	50	48	-4.0%
Education	21	88	86	102	130	27.5%	16	46	43	49	56	14.6%
Engineering and related technologies	33	70	82	103	101	-1.9%	19	28	27	38	34	-8.6%
Food, hospitality and personal services	na	28	37	31	34	9.7%	na	15	17	16	14	-8.3%
Health	15	87	148	157	191	21.7%	9	32	59	71	84	18.8%
Information technology	13	121	110	139	115	-17.3%	6	37	31	34	28	-18.6%
Management and commerce	113	267	350	365	355	-2.7%	65	97	126	130	134	3.2%
Mixed field programmes	24	120	134	109	119	9.2%	13	35	31	21	21	0.0%
Natural and physical sciences	25	103	140	122	135	10.7%	18	35	48	43	52	21.2%
Society and culture	55	299	363	373	417	11.8%	39	129	152	175	188	7.2%
<b>Sub-sector</b>												
Universities	130	317	423	402	452	12.4%	103	237	304	301	341	13.5%
Institutes of technology and polytechnics	181	261	366	407	380	-6.6%	96	134	158	176	168	-4.5%
Colleges of education	13	20	7				9	14	3			
Wānanga	na	92	72	105	131	24.8%	na	55	34	60	72	19.3%
Public providers	324	681	861	907	952	-7.6%	210	441	500	537	581	-10.8%
Private training establishments	na	120	167	185	171	-7.6%	na	70	105	113	101	-10.8%
<b>Study type</b>												
Full-time full-year	147	354	420	436	459	5.3%	151	349	404	429	455	6.0%
Full-time part-year	42	124	147	165	155	-6.1%	20	63	72	79	78	-1.4%
Part-time full-year	75	166	196	209	216	3.3%	29	69	79	86	87	0.3%
Part-time part-year	60	152	248	272	288	5.9%	10	30	48	55	62	12.8%
<b>Female / Male</b>												
Female	174	468	601	626	672	7.3%	118	297	369	395	406	2.8%
Male	150	328	411	456	446	-2.2%	92	214	236	255	276	8.1%
<b>Gaining qualifications</b>												
No. of students who completed a qualification	63	164	240	na	263							
Number of qualifications completed	66	172	253	na	277							

<sup>1</sup> Students enrolled at any time during the year with a tertiary education provider in formal qualifications of greater than 0.03 EFTS (more than one week's duration).

<sup>2</sup> Students enrolled at any time during the year with a tertiary education provider in formal qualifications of less than 0.03 EFTS (less than one week's duration).

<sup>3</sup> Students enrolled at any time during the year with a tertiary education provider in informal programmes, i.e. programmes not registered on the New Zealand Register of Quality Assured Qualifications.

Notes:

(1) The equivalent full-time student count used in this report does not equate to the funded equivalent full-time student count. The data is also not adjusted to allow for students who do not complete their study programme.

(2) The colleges of education have merged with nearby universities over the last decade.

(3) From 2003, the field of study data is based on courses studied. The 1998 data is based on qualifications and is therefore not directly comparable.

<b>Domestic female Other Pasifika tertiary education students by selected characteristics</b>												
Type of qualification (domestic students)	Student enrolments						Equivalent full-time students					
	1998	2003	2006	2007	2008	Change 07-08	1998	2003	2006	2007	2008	Change 07-08
Students in formal qualifications > 0.03 EFTS <sup>1</sup>	174	468	601	626	672	7.3%	118	297	369	395	406	2.8%
Students in formal qualifications < 0.03 EFTS <sup>2</sup>	na	57	45	46	43	-6.5%	na	2	2	2	3	50.0%
Students in informal education programmes <sup>3</sup>	na	447	158	157	116	-26.1%	na	35	10	8	6	-25.0%
<b>Domestic female Other Pasifika students enrolled in formal qualifications &gt; 0.03 EFTS<sup>1</sup></b>												
<b>Qualification level</b>												
Certificates 1-3	44	168	184	202	198	-2.0%	20	75	76	91	78	-13.8%
Certificates 4	8	57	96	88	89	1.1%	4	34	54	45	48	6.0%
Diplomas 5-7	37	70	87	95	106	11.6%	21	41	45	51	47	-7.5%
Bachelors	80	172	214	241	260	7.9%	65	128	156	178	193	8.3%
Postgraduate	11	27	62	44	62	40.9%	8	19	38	29	39	34.5%
<b>Age group</b>												
Under 18 years	na	18	15	11	9	-18.2%	na	13	9	10	4	-59.7%
18 to 19 years	22	54	79	85	89	4.7%	21	44	66	75	78	4.1%
20 to 24 years	66	101	122	142	145	2.1%	49	77	90	102	109	7.5%
25 to 39 years	56	205	259	243	259	6.6%	28	119	146	135	127	-5.5%
40 years and over	na	90	126	145	170	17.2%	na	44	58	74	88	18.3%
<b>Common fields of study</b>												
Agriculture, environmental and related studies	na	na	13	6	na		na	na	3	1	na	
Architecture and building	na	na	10	5	na		na	na	3	3	na	
Creative arts	7	55	72	75	76	1.3%	6	18	31	33	29	-12.2%
Education	17	71	66	73	109	49.3%	13	40	34	39	50	27.7%
Engineering and related technologies	na	7	12	16	18	12.5%	na	2	2	6	3	-43.2%
Food, hospitality and personal services	na	18	27	21	23	9.5%	na	10	13	9	9	5.3%
Health	13	47	94	102	120	17.6%	8	21	45	55	59	6.7%
Information technology	8	50	54	74	63	-14.9%	4	12	11	17	13	-20.0%
Management and commerce	57	168	205	227	226	-0.4%	34	63	75	87	87	0.1%
Mixed field programmes	14	82	97	71	79	11.3%	7	26	22	12	11	-9.8%
Natural and physical sciences	10	59	77	61	72	18.0%	7	23	30	25	27	10.2%
Society and culture	44	189	235	231	271	17.3%	32	80	99	108	114	5.0%
<b>Sub-sector</b>												
Universities	71	189	269	253	287	13.4%	58	138	192	187	212	13.4%
Institutes of technology and polytechnics	93	134	193	211	197	-6.6%	52	68	87	97	87	-10.2%
Colleges of education	10	18	5				7	13	3			
Wānanga	na	64	48	67	91	35.8%	na	39	24	43	49	11.8%
Public providers	174	401	511	528	567	7.4%	118	258	307	328	348	6.2%
Private training establishments	na	71	99	104	108	3.8%	na	39	61	67	58	-13.6%
<b>Study type</b>												
Full-time full-year	84	206	254	278	277	-0.4%	87	201	245	272	271	-0.5%
Full-time part-year	20	65	84	72	93	29.2%	9	34	43	37	49	29.9%
Part-time full-year	42	104	132	126	121	-4.0%	16	45	53	55	48	-13.1%
Part-time part-year	28	93	130	150	181	20.7%	5	17	27	31	39	27.3%
<b>Gaining qualifications and age-standardised participation rate</b>												
No. of students who completed a qualification	41	95	144	na	154							
Number of qualifications completed	42	99	153	na	163							
<sup>1</sup> Students enrolled at any time during the year with a tertiary education provider in formal qualifications of greater than 0.03 EFTS (more than one week's duration). <sup>2</sup> Students enrolled at any time during the year with a tertiary education provider in formal qualifications of less than 0.03 EFTS (less than one week's duration). <sup>3</sup> Students enrolled at any time during the year with a tertiary education provider in informal programmes, i.e. programmes not registered on the New Zealand Register of Quality Assured Qualifications.												
<b>Notes:</b> (1) The equivalent full-time student count used in this report does not equate to the funded equivalent full-time student count. The data is also not adjusted to allow for students who do not complete their study programme. (2) The colleges of education have merged with nearby universities over the last decade. (3) From 2003, the field of study data is based on courses studied. The 1998 data is based on qualifications and is therefore not directly comparable.												

<b>Domestic male Other Pasifika tertiary education students by selected characteristics</b>												
Type of qualification (domestic students)	Student enrolments						Equivalent full-time students					
	1998	2003	2006	2007	2008	Change 07-08	1998	2003	2006	2007	2008	Change 07-08
Students in formal qualifications > 0.03 EFTS <sup>1</sup>	150	328	411	456	446	-2.2%	92	214	236	255	276	8.2%
Students in formal qualifications < 0.03 EFTS <sup>2</sup>	na	60	122	141	38	-73.0%	na	4	4	5	2	-60.0%
Students in informal education programmes <sup>3</sup>	na	548	111	109	83	-23.9%	na	22	6	7	5	-28.6%
<b>Domestic male Other Pasifika students enrolled in formal qualifications &gt; 0.03 EFTS<sup>1</sup></b>												
<b>Qualification level</b>												
Certificates 1-3	50	121	164	207	159	-23.2%	21	56	62	79	68	-13.8%
Certificates 4	na	38	63	65	69	6.2%	na	20	32	29	40	38.8%
Diplomas 5-7	32	54	61	66	68	3.0%	19	35	35	37	35	-4.2%
Bachelors	52	110	119	121	133	9.9%	40	81	87	89	106	18.8%
Postgraduate	na	26	32	32	38	18.8%	na	21	21	21	27	24.6%
<b>Age group</b>												
Under 18 years	na	15	16	24	16	-33.3%	na	10	12	13	9	-35.1%
18 to 19 years	20	32	63	72	70	-2.8%	16	25	46	56	57	1.6%
20 to 24 years	49	102	101	99	114	15.2%	34	80	71	73	88	20.9%
25 to 39 years	65	135	156	161	155	-3.7%	35	79	73	72	78	8.8%
40 years and over	na	44	75	100	91	-9.0%	na	19	34	42	45	7.4%
<b>Common fields of study</b>												
Agriculture, environmental and related studies	na	na	24	26	na		na	na	6	8	na	
Architecture and building	na	na	22	22	na		na	na	13	12	na	
Creative arts	7	44	41	50	53	6.0%	6	16	15	17	19	12.0%
Education	na	17	20	29	21	-27.6%	na	6	9	10	7	-35.5%
Engineering and related technologies	na	63	70	87	83	-4.6%	na	26	25	32	31	-2.6%
Food, hospitality and personal services	na	10	10	10	11	10.0%	na	5	4	7	5	-26.4%
Health	na	40	54	55	71	29.1%	na	11	14	16	25	61.5%
Information technology	5	71	56	65	52	-20.0%	2	25	21	17	14	-17.3%
Management and commerce	56	99	145	138	129	-6.5%	31	34	51	43	47	9.6%
Mixed field programmes	10	38	37	38	40	5.3%	6	9	9	9	10	12.8%
Natural and physical sciences	15	44	63	61	63	3.3%	11	12	18	18	24	36.4%
Society and culture	11	110	128	142	146	2.8%	7	49	53	67	74	10.9%
<b>Sub-sector</b>												
Universities	59	128	154	149	165	10.7%	46	99	112	114	129	13.6%
Institutes of technology and polytechnics	88	127	173	196	183	-6.6%	44	65	71	79	81	2.4%
Colleges of education	3	2	2				2	1				
Wānanga	na	28	24	38	40	5.3%	na	17	9	17	23	38.9%
Public providers	150	280	350	379	385	1.6%	92	183	192	209	233	11.4%
Private training establishments	na	49	68	81	63	-22.2%	na	31	44	46	43	-6.6%
<b>Study type</b>												
Full-time full-year	63	148	166	158	182	15.2%	64	148	159	157	184	17.1%
Full-time part-year	22	59	63	93	62	-33.3%	10	28	30	42	30	-29.4%
Part-time full-year	33	62	64	83	95	14.5%	12	24	26	32	39	23.7%
Part-time part-year	32	59	118	122	107	-12.3%	5	13	21	24	23	-5.5%
<b>Gaining qualifications and age-standardised participation rate</b>												
No. of students who completed a qualification	22	69	96	na	109							
Number of qualifications completed	24	73	100	na	114							
<sup>1</sup> Students enrolled at any time during the year with a tertiary education provider in formal qualifications of greater than 0.03 EFTS (more than one week's duration). <sup>2</sup> Students enrolled at any time during the year with a tertiary education provider in formal qualifications of less than 0.03 EFTS (less than one week's duration). <sup>3</sup> Students enrolled at any time during the year with a tertiary education provider in informal programmes, i.e. programmes not registered on the New Zealand Register of Quality Assured Qualifications.												
<b>Notes:</b> (1) The equivalent full-time student count used in this report does not equate to the funded equivalent full-time student count. The data is also not adjusted to allow for students who do not complete their study programme. (2) The colleges of education have merged with nearby universities over the last decade. (3) From 2003, the field of study data is based on courses studied. The 1998 data is based on qualifications and is therefore not directly comparable.												