

## Pasifika tertiary education students by ethnicity

Samoan students formed the biggest Pasifika ethnicity in 2006. Forty-five percent of domestic Pasifika tertiary education enrolments were made by students who identified themselves as Samoan – 12,200 enrolments. Of the population aged 15 years and over, 81,100 people (2.6 percent) identified themselves as Samoan in 2006.

Cook Island students were the second largest Pasifika ethnicity, accounting for 21 percent of total Pasifika enrolments in 2006, or 5,650 enrolments. There were 34,300 Cook Islanders aged 15 years and over in New Zealand in 2006.

Tongans represented 16 percent of total domestic Pasifika students in 2006 – 4,250 enrolments. Fijian students were the next biggest Pasifika group at 11 percent – 2,950 enrolments. In 2006, Niuean enrolments totalled 1,960 (7 percent) and there were 705 enrolments made by Tokelauans (3 percent). Another thousand enrolments were made in 2006 by students who identified themselves with Other Pasifika ethnicities. Of the population aged 15 years and over, 29,200 identified themselves as Tongan in 2006, 13,600 as Niuean, 6,700 as Fijian, 3,950 as Tokelauan and 6,680 identified themselves with Other Pasifika ethnicities.

Overall, tertiary education enrolments made by Pacific peoples fell in 2006. Samoans made 4.9 percent fewer enrolments. Cook Islanders, Tongans and Niueans also had fewer enrolments in 2006 – down by 7.1 percent, 3.9 percent and 0.9 percent, respectively. Partially offsetting the 2006 decline, were increased enrolments by Fijian students, up 2.6 percent, Tokelauans, up 2.2 percent, and the Other Pasifika group, up 3.9 percent.

Bachelors-level study increased in 2006 for the various Pasifika ethnicities except Tongans and Niueans. Study at bachelors-level for all domestic students remained comparatively stable between 2004 and 2006.

Twenty-six percent of Pasifika students studied at bachelors-level in 2006, compared with 28 percent for all domestic students. However, the average study load of Pasifika students was lighter in 2006. In terms of the amount of study, 40 percent of domestic students studied at bachelors-level in 2006, compared with only 32 percent of Pasifika students.

### About the data used in this fact-sheet:

The information presented here refers to New Zealand's domestic Pasifika students enrolled in provider-based formal qualifications of more than one week's duration, unless otherwise stated.

Cook Islanders, Niueans and Tokelauans are grouped with domestic Pasifika students, whether they are resident in New Zealand or not. Fijian, Tongan and Samoan students who do not reside permanently in New Zealand are classed as international students.

In 2000, the data collection was extended to record multiple ethnicities. Before this, the number of Pasifika students was understated. Only one ethnicity was collected before 2000, while now up to 3 ethnicities are collected and students are counted in each group.

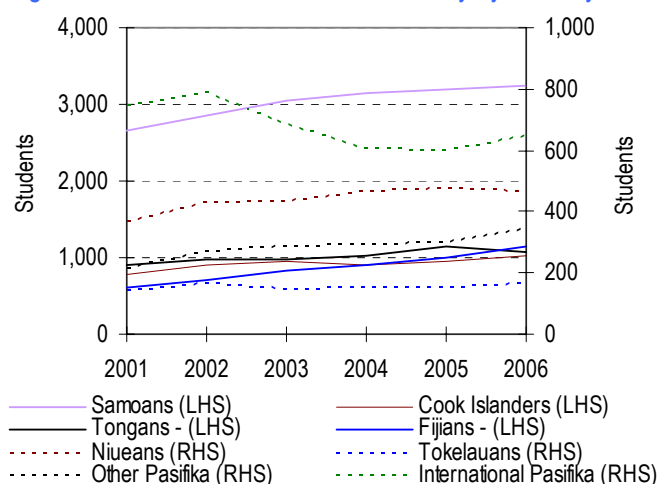
Students may be enrolled with a tertiary education provider at any time during the year.

From 1999 onwards, information for private training establishments has been included in the statistical collections. Private providers are included if they receive government enrolments-based funding or if their students were eligible to apply for loans or allowances.

The equivalent full-time student (EFTS) unit referred to in this factsheet is a measure or 'size' of each student's enrolment. One equivalent full-time student unit represents the load taken by a student enrolled full-time for one year. Part-time study years are expressed as proportions of an EFTS, for example, 0.75 EFTS. The equivalent full-time student count is the sum of the EFTS units for a year.

The equivalent full-time student count used in this fact-sheet does not equate to the count of student component-funded learners.

Figure 1: Students in bachelors-level study by ethnicity



Study of postgraduate certificates and diplomas, masters degrees and doctorates increased overall in 2006 for all Pasifika ethnicities although, at masters-level, enrolments by Tongans and Fijians decreased, down by 15 percent and 16 percent, respectively. Overall, for all domestic students there were fewer enrolments at masters-level in 2006.

Level 1 to 3 certificate enrolments fell for all Pasifika ethnicities in response to government priorities to get more people into higher level (and consequently higher value) qualifications. At this level in 2006, Samoan and Other Pasifika enrolments declined by 16 percent each, Fijian enrolments declined by 13 percent and Cook Island and Tongan enrolments fell by 11 percent each. There were smaller decreases for Niueans and Tokelauans, down by 3.6 percent and 1.1 percent, respectively.

In 2006, there was no discernible enrolment trend in level 4 certificates for the various Pasifika ethnicities. Increases were recorded for Tongans, Other Pasifika, Niueans and Samoans – up by 25 percent, 18 percent, 12 percent and 7.9 percent, respectively. Level 4 certificate enrolments made by Cook Islanders fell by 19 percent. Level 4 enrolments made by Fijians and Tokelauans also fell by 5.6 percent and 1.9 percent, respectively. For the Pasifika group as a whole, level 4 certificate enrolments increased from 2005 to 2006 by 1.5 percent.

Similarly, the enrolment pattern in level 5 to 7 diplomas varied considerably across the Pasifika ethnicities in 2006. Increases in diploma enrolments were recorded for Fijians, Samoans and Tongans – up by 8.3 percent, 4.4 percent and 0.9 percent, respectively. For Niueans the enrolments in level 5 to 7 diplomas remained unchanged in 2006, while for Tokelauans, Cook Islanders and the Other Pasifika group they declined – down by 4.1 percent, 2.1 percent and 2.0 percent, respectively. For the Pasifika group as a whole, level 5 to 7 diploma enrolments increased from 2005 to 2006 by 2.4 percent.

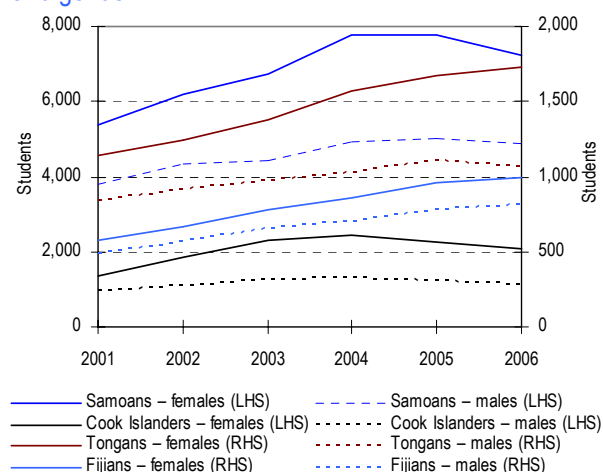
### More women studying higher-level qualifications

Six out of 10 Pasifika students were women in 2006. Fijians were the only ethnicity with a lower proportion of women – 55 percent – while Cook Islanders had the highest proportion of women – 65 percent. In comparison, 58 percent of all domestic students were women in 2006.

On average, over the last five years, 30 percent of Pasifika women and 27 percent of Pasifika males studied at bachelors-level or higher. In comparison, 40 percent of all domestic female students, and 35 percent of males, studied at bachelors-level or higher over the last five years.

Information from the 2006 Census of Population and Dwellings shows that significant progress has been made by New Zealand's Pasifika population with those holding a tertiary qualifications almost doubling over the last 10 years. Ten percent of the Pasifika population held a tertiary qualification in 1996 and by 2006 this had increased to 19 percent. The challenge ahead is to bring this proportion closer to that for the population as a whole – nearer to 40 percent.

Figure 2: Students in formal tertiary education by ethnicity and gender



### More Pasifika students aged 25 years and under

The proportion of students aged under 25 years ranged from 46 percent to 50 percent in 2006 for all but two of the Pasifika ethnicities. The exceptions were the Cook Islanders, who had 42 percent of their number aged under 25 years, and the Other Pasifika group for whom the percentage was 39. In the case of the entire domestic student population, 38 percent were aged under 25 years in 2006.

The Statistics New Zealand population projections suggests that the Pasifika population is likely to become younger in the foreseeable future. This is expected to lead to an increasing proportion of Pasifika people in the total student population. Also, as younger students tend

to study with the aim of getting a qualification, it is expected that the qualification completion rate for Pasifika students will increase.

### More Pasifika students in management and commerce

More than 30 percent of Samoan, Cook Island, Tongan and Fijian students studied management and commerce in 2006, while only one in four of all domestic students studied in this field. The share of Niueans, Tokelauans and Other Pasifika students who studied management and commerce in 2006 was similar to that for all domestic students and ranged from 25 to 27 percent. Information technology also attracted a greater percentage of Pasifika students. As many as 8.3 percent of Cook Islanders studied in this field. Around 5 percent of Tongans and Fijians studied information technology – similar to the 5.4 percent for all domestic students. Few Pasifika students enrolled in agricultural, environmental and related studies in 2006 – an exception were the Cook Islanders who had 2.9 percent studying agriculture but this was considerably lower than the 9.1 percent of all domestic students.

Eleven percent of Fijians studied in the field of engineering in 2006, compared to 9.6 percent of all domestic students. However, for most Pasifika ethnicities, the 2006 engineering enrolments were proportionately lower than for all domestic students – between 1 and 2 percentage points. One in five of all domestic students and one in five of Samoan, Tongan and Other Pasifika students, were enrolled in the field of society and culture in 2006. Study in the natural and physical sciences was undertaken by 7.2 percent of Fijian students and 4.9 percent of Other Pasifika students in 2006 which was higher than the proportion for all domestic students (4.3 percent).

### International students from the Pacific

Samoan, Tongan and Fijian students who do not reside permanently in New Zealand are classed as international students. In 2006, there were 1,610 international Pasifika enrolments, up 19 percent on the previous year. Before

the latest increase, international Pasifika enrolments had declined for three consecutive years.

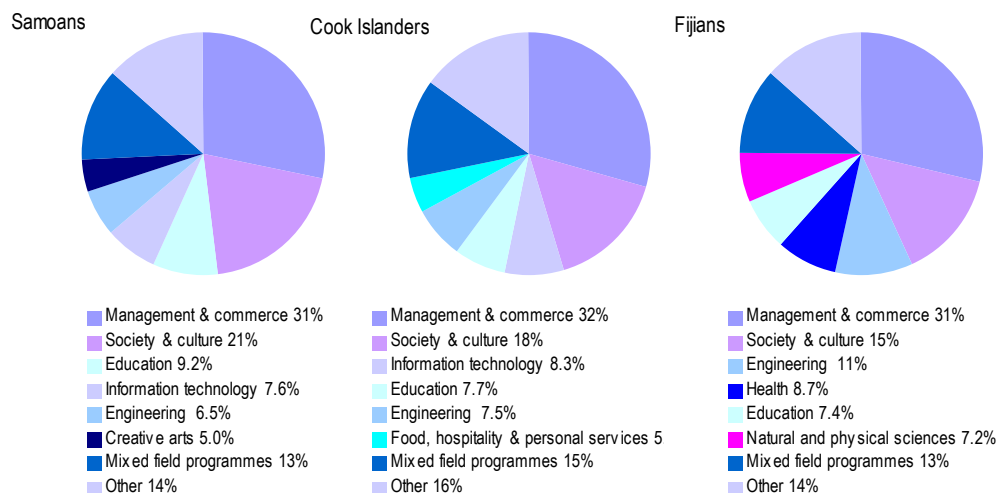
Forty-seven percent of Pasifika international students and 51 percent of all international students studied full-time for a full-year. That is, they followed a programme of study of 32 weeks or more and at least 0.8 of an equivalent full-time student unit. In comparison, 37 percent of domestic Pasifika students studied full-time for a full-year in 2006 and 31 percent of all domestic students. The amount of study undertaken by Pasifika students, across all levels of study, averaged 66 percent of an equivalent full-time student unit in 2006. This was higher than for all domestic students who averaged 53 percent of an equivalent full-time student unit.

In 2006, international Pasifika enrolments at bachelors-level or higher increased by 19 percent to 877 enrolments, while for all international students study at this level declined by 7.1 percent. In comparison, the 2006 enrolments at bachelors-level or higher increased by 4.1 percent for all domestic Pasifika students while these remained stable for all domestic students.

Over the last five years, an equal number of international Pasifika students were women and men. In contrast, 6 out of every 10 domestic Pasifika students over this period were women and 58 percent of all domestic students.

Four out of 10 international Pasifika students studied in the field of management and commerce in 2006. This compared with approximately one in three domestic Pasifika students and one in four of all domestic students. Natural and physical sciences attracted 6.7 percent of international Pasifika students in 2006, compared to 4.3 percent of all domestic students. Just over 9 percent of Pasifika international students studied in the field of society and culture.

Figure 3: Tertiary education students by selected Pasifika ethnicities and by field of study



## Samoan tertiary education students by selected characteristics

	Student enrolments					Equivalent full-time students				
	1996	2001	2005	2006	% change 05-06	1996	2001	2005	2006	% change 05-06
<b>Type of qualification (domestic students)</b>										
Students in formal qualifications > 0.03 EFTS <sup>1</sup>	4,416	9,194	12,781	12,154	-4.9%	2,901	6,030	7,808	7,710	-1.3%
Students in formal qualifications < 0.03 EFTS <sup>2</sup>	na	na	3,950	2,004	-49.3%	na	32	160	105	-34.4%
Students in informal education programmes <sup>3</sup>	na	na	3,230	2,174	-32.7%	na	264	220	139	-36.8%
<b>Domestic students enrolled in formal qualifications &gt; 0.03 EFTS<sup>1</sup></b>										
<b>Qualification level</b>										
Certificates 1-3	1,590	4,303	6,579	5,522	-16.1%	737	2,272	2,904	2,688	-7.5%
Certificates 4	200	997	1,816	1,959	7.9%	70	591	1,061	1,150	8.4%
Diplomas 5-7	971	1,413	1,854	1,936	4.4%	632	900	1,153	1,151	-0.2%
Bachelors	1,706	2,654	3,190	3,253	2.0%	1,352	2,061	2,453	2,490	1.5%
Honours and postgraduate cert./dip.	69	157	211	225	6.6%	42	92	117	115	-1.7%
Masters	77	149	155	156	0.6%	56	94	85	81	-4.2%
Doctorates	14	24	32	35	9.4%	13	21	36	36	0.3%
<b>Age group</b>										
Under 18 years	180	575	791	700	-11.5%	88	351	474	478	0.7%
18 to 19 years	870	1,538	1,862	2,025	8.8%	653	1,273	1,539	1,693	10.1%
20 to 24 years	1,478	2,563	2,946	2,973	0.9%	1,162	1,884	2,121	2,168	2.2%
25 to 39 years	1,398	3,250	4,545	4,178	-8.1%	756	1,844	2,414	2,215	-8.2%
40 years and over	479	1,268	2,637	2,278	-13.6%	240	679	1,261	1,155	-8.4%
<b>Female / Male</b>										
Female	2,369	5,377	7,769	7,252	-6.7%	1,589	3,528	4,850	4,708	-2.9%
Male	2,047	3,817	5,012	4,902	-2.2%	1,312	2,502	2,959	3,001	1.4%
<b>Common fields of study</b>										
Agriculture, environmental and related studies	36	47	136	166	22.1%	16	26	49	61	25.9%
Architecture and building	119	272	329	354	7.6%	71	182	176	203	15.5%
Creative arts	123	443	582	610	4.8%	105	341	460	462	0.3%
Education	481	849	1,124	1,124	0.0%	349	596	745	709	-4.8%
Engineering and related technologies	332	506	726	784	8.0%	173	297	353	374	5.9%
Food, hospitality and personal services	99	276	350	423	20.9%	42	163	227	269	18.1%
Health	193	345	513	526	2.5%	116	227	310	333	7.4%
Information technology	167	785	898	926	3.1%	88	368	408	407	-0.1%
Management and commerce	1,173	2,652	3,851	3,734	-3.0%	667	1,481	2,137	2,113	-1.2%
Mixed field programmes	531	1,553	2,575	1,626	-36.9%	207	809	1,000	855	-14.5%
Natural and physical sciences	217	228	279	281	0.7%	171	154	201	208	3.1%
Society and culture	1,149	1,983	2,567	2,580	0.5%	897	1,385	1,742	1,716	-1.5%
<b>Sub-sector</b>										
Universities	1,578	2,762	3,823	3,892	1.8%	1,300	2,141	2,870	2,934	2.2%
Institutes of technology and polytechnics	2,517	2,775	4,249	4,098	-3.6%	1,310	1,632	2,050	1,911	-6.8%
Colleges of education	401	489	62	69	11.3%	278	348	39	39	0.1%
Wānanga	20	243	1,760	814	-53.8%	14	111	712	415	-41.8%
Public providers	4,416	6,176	9,642	8,713	-9.6%	2,901	4,232	5,671	5,299	-6.6%
Private training establishments	na	3,175	3,445	3,738	8.5%	na	1,799	2,137	2,411	12.8%
<b>Study type</b>										
Full-time full-year	1,977	3,649	4,663	4,585	-1.7%	2,035	3,869	4,865	4,770	-2.0%
Full-time part-year	656	2,257	2,384	2,467	3.5%	384	1,138	1,240	1,292	4.2%
Part-time full-year	1,030	1,408	2,108	2,163	2.6%	374	591	940	983	4.5%
Part-time part-year	753	1,880	3,626	2,939	-18.9%	108	432	764	665	-12.9%
<b>Gaining qualifications</b>										
Number of students who completed a qualification	737	1,929	2,605	2,730	4.8%					
Number of qualifications completed	765	2,050	2,791	2,950	5.7%					

<sup>1</sup> Students enrolled at any time during the year with a tertiary education provider in formal qualifications of greater than 0.03 EFTS (more than one week's duration).

<sup>2</sup> Students enrolled at any time during the year with a tertiary education provider in formal qualifications of less than 0.03 EFTS (less than one week's duration).

<sup>3</sup> Students enrolled at any time during the year with a tertiary education provider in informal programmes, i.e. programmes not registered on the New Zealand Register of Quality Assured Qualifications.

Note: The equivalent full-time student count used in this report does not equate to the funded equivalent full-time student count. The data is also not adjusted to allow for students who do not complete their study programme.

Cook Island tertiary education students by selected characteristics										
	Student enrolments					Equivalent full-time students				
	1996	2001	2005	2006	% change 05-06	1996	2001	2005	2006	% change 05-06
<b>Type of qualification (domestic students)</b>										
Students in formal qualifications > 0.03 EFTS <sup>1</sup>	1,542	3,977	6,079	5,649	-7.1%	861	2,318	3,467	3,196	-7.8%
Students in formal qualifications < 0.03 EFTS <sup>2</sup>	na	na	2,006	1,020	-49.2%	na	15	68	40	-41.2%
Students in informal education programmes <sup>3</sup>	na	na	1,503	930	-38.1%	na	109	102	68	-33.3%
<b>Domestic students enrolled in formal qualifications &gt; 0.03 EFTS<sup>1</sup></b>										
<b>Qualification level</b>										
Certificates 1-3	623	2,362	3,653	3,260	-10.8%	278	1,125	1,590	1,413	-11.1%
Certificates 4	97	442	1,147	928	-19.1%	24	236	678	506	-25.4%
Diplomas 5-7	372	523	759	743	-2.1%	218	323	457	450	-1.6%
Bachelors	472	779	954	1,023	7.2%	313	582	668	742	11.1%
Postgraduate	41	87	119	137	15.1%	28	52	74	85	14.8%
<b>Age group</b>										
Under 18 years	91	358	474	418	-11.8%	44	207	303	288	-5.2%
18 to 19 years	221	547	670	750	11.9%	168	389	489	544	11.3%
20 to 24 years	436	943	1,218	1,225	0.6%	285	618	769	749	-2.7%
25 to 39 years	586	1,561	2,348	2,040	-13.1%	283	828	1,232	1,030	-16.4%
40 years and over	202	568	1,369	1,216	-11.2%	80	276	674	585	-13.2%
<b>Female / Male</b>										
Female	848	2,374	3,865	3,513	-9.1%	485	1,367	2,250	2,063	-8.3%
Male	694	1,603	2,214	2,136	-3.5%	376	951	1,218	1,132	-7.0%
<b>Common fields of study</b>										
Agriculture, environmental and related studies	22	53	170	164	-3.5%	11	27	62	54	-12.9%
Architecture and building	47	131	169	186	10.1%	23	75	87	96	10.7%
Creative arts	57	155	249	237	-4.8%	52	115	199	186	-6.4%
Education	195	265	469	434	-7.5%	106	175	257	252	-1.7%
Engineering and related technologies	188	325	410	421	2.7%	77	172	171	155	-9.6%
Food, hospitality and personal services	61	183	309	293	-5.2%	28	107	204	186	-8.8%
Health	43	117	214	227	6.1%	28	79	118	134	13.1%
Information technology	59	308	496	471	-5.0%	32	138	205	199	-3.3%
Management and commerce	391	1,058	1,775	1,807	1.8%	194	480	832	861	3.6%
Mixed field programmes	164	950	1,216	828	-31.9%	60	448	507	400	-21.1%
Natural and physical sciences	72	108	100	107	7.0%	45	69	65	71	9.0%
Society and culture	300	683	1,208	987	-18.3%	206	434	760	601	-20.9%
<b>Sub-sector</b>										
Universities	398	782	1,067	1,156	8.3%	289	564	737	816	10.8%
Institutes of technology and polytechnics	991	1,256	2,334	2,213	-5.2%	464	670	960	893	-7.0%
Colleges of education	141	119	23	22	-4.3%	82	80	16	13	-15.4%
Wānanga	31	434	1,386	901	-35.0%	26	204	802	491	-38.8%
Public providers	1,542	2,542	4,628	4,177	-9.7%	861	1,518	2,514	2,213	-12.0%
Private training establishments	na	1,513	1,633	1,643	0.6%	na	800	953	983	3.1%
<b>Study type</b>										
Full-time full-year	531	1,228	1,933	1,711	-11.5%	539	1,302	2,014	1,777	-11.8%
Full-time part-year	223	1,048	1,027	1,092	6.3%	137	531	516	546	5.8%
Part-time full-year	467	672	1,214	1,147	-5.5%	148	257	515	491	-4.8%
Part-time part-year	321	1,029	1,905	1,699	-10.8%	36	228	422	382	-9.5%
<b>Gaining qualifications</b>										
Number of students who completed a qualification	253	740	1,409	1,305	-7.4%					
Number of qualifications completed	259	785	1,497	1,446	-3.4%					
<sup>1</sup> Students enrolled at any time during the year with a tertiary education provider in formal qualifications of greater than 0.03 EFTS (more than one week's duration). <sup>2</sup> Students enrolled at any time during the year with a tertiary education provider in formal qualifications of less than 0.03 EFTS (less than one week's duration). <sup>3</sup> Students enrolled at any time during the year with a tertiary education provider in informal programmes, i.e. programmes not registered on the New Zealand Register of Quality Assured Qualifications. Note: The equivalent full-time student count used in this report does not equate to the funded equivalent full-time student count. The data is also not adjusted to allow for students who do not complete their study programme.										

<b>Tongan tertiary education students by selected characteristics</b>										
	Student enrolments					Equivalent full-time students				
	1996	2001	2005	2006	% change 05-06	1996	2001	2005	2006	% change 05-06
<b>Type of qualification (domestic students)</b>										
Students in formal qualifications > 0.03 EFTS <sup>1</sup>	1,228	2,946	4,417	4,245	-3.9%	805	1,977	2,779	2,790	0.4%
Students in formal qualifications < 0.03 EFTS <sup>2</sup>	na	na	1,619	968	-40.2%	na	11	56	39	-30.4%
Students in informal education programmes <sup>3</sup>	na	na	1,335	785	-41.2%	na	79	92	56	-39.1%
<b>Domestic students enrolled in formal qualifications &gt; 0.03 EFTS<sup>1</sup></b>										
<b>Qualification level</b>										
Certificates 1-3	426	1,390	2,304	2,046	-11.2%	184	719	1,108	1,037	-6.4%
Certificates 4	46	334	542	679	25.3%	11	171	309	402	30.2%
Diplomas 5-7	287	421	670	676	0.9%	173	285	420	428	1.9%
Bachelors	479	891	1,136	1,072	-5.6%	396	717	849	828	-2.5%
Honours and postgraduate cert./dip.	17	58	71	90	26.8%	11	36	41	45	11.0%
Masters	25	49	52	44	-15.4%	24	33	29	25	-13.8%
Doctorates	6	19	25	25	0.0%	6	16	24	25	6.3%
<b>Age group</b>										
Under 18 years	61	202	332	242	-27.1%	31	124	183	169	-7.7%
18 to 19 years	207	517	605	709	17.2%	149	420	502	601	19.8%
20 to 24 years	401	914	1,159	1,108	-4.4%	328	700	860	822	-4.4%
25 to 39 years	434	959	1,559	1,470	-5.7%	234	552	860	829	-3.6%
40 years and over	123	354	762	716	-6.0%	64	181	375	369	-1.5%
<b>Female / Male</b>										
Female	632	1,653	2,578	2,541	-1.4%	416	1,141	1,667	1,724	3.4%
Male	596	1,293	1,839	1,704	-7.3%	389	836	1,113	1,066	-4.2%
<b>Common fields of study</b>										
Agriculture, environmental and related studies	10	23	48	48	0.0%	5	13	15	18	21.4%
Architecture and building	38	86	142	155	9.2%	26	56	80	95	18.2%
Creative arts	26	91	152	159	4.6%	23	70	108	121	12.2%
Education	113	187	261	250	-4.2%	77	124	175	160	-8.7%
Engineering and related technologies	129	219	305	319	4.6%	67	127	171	166	-3.2%
Food, hospitality and personal services	22	87	137	147	7.3%	10	50	86	95	10.3%
Health	72	146	219	252	15.1%	36	105	146	165	12.7%
Information technology	33	201	207	228	10.1%	17	84	103	106	2.8%
Management and commerce	327	861	1,481	1,339	-9.6%	199	519	760	797	5.0%
Mixed field programmes	150	559	799	669	-16.3%	58	279	386	352	-8.7%
Natural and physical sciences	80	134	148	142	-4.1%	63	114	107	108	0.5%
Society and culture	279	612	953	894	-6.2%	224	438	641	607	-5.3%
<b>Sub-sector</b>										
Universities	463	1,040	1,405	1,336	-4.9%	397	851	1,037	1,029	-0.8%
Institutes of technology and polytechnics	699	832	1,668	1,522	-8.8%	350	490	772	746	-3.3%
Colleges of education	75	114	8	14	75.0%	53	74	6	10	63.0%
Wānanga	9	91	392	283	-27.8%	5	35	198	140	-29.1%
Public providers	1,228	2,043	3,385	3,096	-8.5%	805	1,450	2,012	1,925	-4.3%
Private training establishments	na	948	1,158	1,257	8.5%	na	527	767	865	12.8%
<b>Study type</b>										
Full-time full-year	548	1,256	1,686	1,721	2.1%	566	1,323	1,759	1,788	1.6%
Full-time part-year	165	703	942	881	-6.5%	94	352	488	461	-5.7%
Part-time full-year	278	393	683	725	6.1%	111	171	310	336	8.1%
Part-time part-year	237	594	1,106	918	-17.0%	35	132	222	207	-6.8%
<b>Gaining qualifications</b>										
Number of students who completed a qualification	176	659	952	987	3.7%					
Number of qualifications completed	184	694	1,024	1,072	4.7%					

<sup>1</sup> Students enrolled at any time during the year with a tertiary education provider in formal qualifications of greater than 0.03 EFTS (more than one week's duration).

<sup>2</sup> Students enrolled at any time during the year with a tertiary education provider in formal qualifications of less than 0.03 EFTS (less than one week's duration).

<sup>3</sup> Students enrolled at any time during the year with a tertiary education provider in informal programmes, i.e. programmes not registered on the New Zealand Register of Quality Assured Qualifications.

Note: The equivalent full-time student count used in this report does not equate to the funded equivalent full-time student count. The data is also not adjusted to allow for students who do not complete their study programme.

<b>Fijian tertiary education students by selected characteristics</b>										
	Student enrolments					Equivalent full-time students				
	1996	2001	2005	2006	% change 05-06	1996	2001	2005	2006	% change 05-06
<b>Type of qualification (domestic students)</b>										
Students in formal qualifications > 0.03 EFTS <sup>1</sup>	778	1,608	2,874	2,950	2.6%	454	1,061	1,739	1,813	4.3%
Students in formal qualifications < 0.03 EFTS <sup>2</sup>	na	na	889	448	-49.6%	na	4	29	17	-41.4%
Students in informal education programmes <sup>3</sup>	na	na	710	503	-29.2%	na	17	48	32	-33.3%
<b>Domestic students enrolled in formal qualifications &gt; 0.03 EFTS<sup>1</sup></b>										
<b>Qualification level</b>										
Certificates 1-3	229	552	1,213	1,061	-12.5%	84	278	482	415	-14.0%
Certificates 4	43	145	339	320	-5.6%	9	73	162	179	10.0%
Diplomas 5-7	203	318	434	470	8.3%	110	190	249	250	0.3%
Bachelors	290	610	990	1,136	14.7%	223	474	763	881	15.5%
Honours and postgraduate cert./dip.	14	42	75	99	32.0%	9	26	38	50	33.4%
Masters	30	28	50	42	-16.0%	20	16	27	22	-19.1%
Doctorates	0	6	20	19	-5.0%	0	5	18	17	-3.4%
<b>Age group</b>										
Under 18 years	20	65	106	77	-27.4%	12	46	63	53	-16.4%
18 to 19 years	140	287	474	496	4.6%	110	246	404	436	8.1%
20 to 24 years	247	515	836	912	9.1%	176	398	603	679	12.6%
25 to 39 years	291	518	919	914	-0.5%	126	262	451	426	-5.5%
40 years and over	78	223	539	551	2.2%	28	108	218	218	0.4%
<b>Female / Male</b>										
Female	365	855	1,521	1,538	1.1%	221	580	964	998	3.5%
Male	413	753	1,353	1,412	4.4%	234	480	775	815	5.2%
<b>Common fields of study</b>										
Agriculture, environmental and related studies	9	14	33	39	18.2%	4	9	12	14	15.7%
Architecture and building	27	40	60	77	28.3%	11	22	28	41	44.7%
Creative arts	24	55	64	84	31.3%	20	42	45	67	46.6%
Education	36	135	194	217	11.9%	20	91	113	114	1.2%
Engineering and related technologies	105	175	314	321	2.2%	51	104	170	173	2.0%
Food, hospitality and personal services	28	47	80	67	-16.3%	7	31	50	38	-23.7%
Health	42	104	225	258	14.7%	33	65	153	184	20.3%
Information technology	34	126	153	155	1.3%	15	73	84	79	-6.4%
Management and commerce	277	511	890	908	2.0%	147	300	465	469	0.9%
Mixed field programmes	47	146	477	369	-22.6%	13	78	186	152	-18.5%
Natural and physical sciences	57	99	190	211	11.1%	45	75	153	175	14.5%
Society and culture	124	241	426	450	5.6%	87	172	280	308	9.9%
<b>Sub-sector</b>										
Universities	278	674	1,100	1,216	10.5%	218	527	847	937	10.6%
Institutes of technology and polytechnics	484	551	1,152	1,142	-0.9%	222	295	532	512	-3.9%
Colleges of education	20	49	12	10	-16.7%	15	38	7	5	-30.9%
Wānanga	0	18	245	249	1.6%	0	9	84	102	22.2%
Public providers	778	1,273	2,462	2,581	4.8%	454	869	1,470	1,555	5.8%
Private training establishments	na	347	458	408	-10.9%	na	192	270	258	-4.3%
<b>Study type</b>										
Full-time full-year	296	718	1,145	1,205	5.2%	301	729	1,156	1,224	5.8%
Full-time part-year	90	289	463	409	-11.7%	46	151	225	192	-14.7%
Part-time full-year	241	284	525	629	19.8%	87	118	218	262	20.0%
Part-time part-year	151	317	741	707	-4.6%	20	63	139	135	-2.8%
<b>Gaining qualifications</b>										
Number of students who completed a qualification	104	339	598	625	4.5%					
Number of qualifications completed	108	365	648	670	3.4%					

<sup>1</sup> Students enrolled at any time during the year with a tertiary education provider in formal qualifications of greater than 0.03 EFTS (more than one week's duration).

<sup>2</sup> Students enrolled at any time during the year with a tertiary education provider in formal qualifications of less than 0.03 EFTS (less than one week's duration).

<sup>3</sup> Students enrolled at any time during the year with a tertiary education provider in informal programmes, i.e. programmes not registered on the New Zealand Register of Quality Assured Qualifications.

Note: The equivalent full-time student count used in this report does not equate to the funded equivalent full-time student count. The data is also not adjusted to allow for students who do not complete their study programme.

	Student enrolments					Equivalent full-time students				
	1996	2001	2005	2006	% change 05-06	1996	2001	2005	2006	% change 05-06
<b>Niuean tertiary education students by selected characteristics</b>										
<b>Type of qualification (domestic students)</b>										
Students in formal qualifications > 0.03 EFTS <sup>1</sup>	634	1,410	1,975	1,958	-0.9%	392	847	1,216	1,208	-0.7%
Students in formal qualifications < 0.03 EFTS <sup>2</sup>	na	na	786	364	-53.7%	na	5	26	13	-50.0%
Students in informal education programmes <sup>3</sup>	na	na	494	271	-45.1%	na	41	29	16	-44.8%
<b>Domestic students enrolled in formal qualifications &gt; 0.03 EFTS<sup>1</sup></b>										
<b>Qualification level</b>										
Certificates 1-3	232	702	1,030	993	-3.6%	103	332	482	454	-5.8%
Certificates 4	42	149	277	309	11.6%	8	84	150	180	20.6%
Diplomas 5-7	148	218	313	313	0.0%	91	133	199	197	-1.0%
Bachelors	233	366	473	463	-2.1%	177	275	348	340	-2.4%
Postgraduate	20	41	48	61	27.1%	13	23	38	37	-3.1%
<b>Age group</b>										
Under 18 years	37	114	166	155	-6.6%	15	68	110	106	-4.2%
18 to 19 years	112	225	261	330	26.4%	78	168	202	255	26.1%
20 to 24 years	199	398	498	452	-9.2%	151	290	354	314	-11.3%
25 to 39 years	221	485	704	681	-3.3%	113	234	369	358	-3.0%
40 years and over	64	188	346	340	-1.7%	34	86	181	175	-3.1%
<b>Female / Male</b>										
Female	341	826	1,249	1,206	-3.4%	223	482	764	751	-1.7%
Male	293	584	726	752	3.6%	169	365	452	457	1.0%
<b>Common fields of study</b>										
Agriculture, environmental and related studies	10	10	38	36	-5.3%	6	4	19	18	-1.9%
Architecture and building	22	49	62	57	-8.1%	12	27	35	34	-3.7%
Creative arts	22	56	98	100	2.0%	19	45	68	79	16.0%
Education	63	160	216	190	-12.0%	50	107	145	115	-20.6%
Engineering and related technologies	74	94	125	107	-14.4%	31	53	53	53	0.0%
Food, hospitality and personal services	22	76	105	124	18.1%	8	45	62	86	38.2%
Health	31	60	107	124	15.9%	23	39	64	73	14.6%
Information technology	22	105	117	130	11.1%	10	37	60	63	4.4%
Management and commerce	142	356	537	539	0.4%	74	168	267	283	5.7%
Mixed field programmes	72	291	343	317	-7.6%	22	144	167	139	-16.5%
Natural and physical sciences	30	39	46	48	4.3%	22	27	35	34	-1.4%
Society and culture	155	228	369	361	-2.2%	117	151	242	231	-4.6%
<b>Sub-sector</b>										
Universities	210	344	548	539	-1.6%	166	261	411	403	-2.1%
Institutes of technology and polytechnics	365	420	716	679	-5.2%	171	226	326	300	-8.0%
Colleges of education	66	105	17	12	-29.4%	48	70	10	6	-38.1%
Wānanga	9	97	242	227	-6.2%	7	32	133	116	-12.4%
Public providers	634	956	1,475	1,422	-3.6%	392	589	880	825	-6.2%
Private training establishments	na	471	557	593	6.5%	na	258	337	383	13.8%
<b>Study type</b>										
Full-time full-year	262	509	734	714	-2.7%	266	525	761	730	-4.2%
Full-time part-year	83	326	368	355	-3.5%	53	169	189	194	2.9%
Part-time full-year	170	215	351	401	14.2%	58	83	156	176	12.3%
Part-time part-year	119	360	522	488	-6.5%	14	70	110	108	-1.4%
<b>Gaining qualifications</b>										
Number of students who completed a qualification	92	309	451	428	-5.1%					
Number of qualifications completed	99	325	471	461	-2.1%					

<sup>1</sup> Students enrolled at any time during the year with a tertiary education provider in formal qualifications of greater than 0.03 EFTS (more than one week's duration).

<sup>2</sup> Students enrolled at any time during the year with a tertiary education provider in formal qualifications of less than 0.03 EFTS (less than one week's duration).

<sup>3</sup> Students enrolled at any time during the year with a tertiary education provider in informal programmes, i.e. programmes not registered on the New Zealand Register of Quality Assured Qualifications.

Note: The equivalent full-time student count used in this report does not equate to the funded equivalent full-time student count. The data is also not adjusted to allow for students who do not complete their study programme.

## Tokelauan tertiary education students by selected characteristics

	Student enrolments					Equivalent full-time students				
	1996	2001	2005	2006	% change 05-06	1996	2001	2005	2006	% change 05-06
<b>Type of qualification (domestic students)</b>										
Students in formal qualifications > 0.03 EFTS <sup>1</sup>	258	520	690	705	2.2%	169	340	447	433	-3.1%
Students in formal qualifications < 0.03 EFTS <sup>2</sup>	na	na	248	142	-42.7%	na	3	10	10	0.0%
Students in informal education programmes <sup>3</sup>	na	na	204	120	-41.2%	na	13	13	8	-38.5%
<b>Domestic students enrolled in formal qualifications &gt; 0.03 EFTS<sup>1</sup></b>										
<b>Qualification level</b>										
Certificates 1-3	89	270	365	361	-1.1%	50	141	181	173	-4.6%
Certificates 4	22	47	103	101	-1.9%	5	31	62	59	-4.5%
Diplomas 5-7	54	66	97	93	-4.1%	36	42	67	57	-14.2%
Bachelors	90	143	152	164	7.9%	70	116	122	131	7.2%
Postgraduate	9	15	24	26	8.3%	8	9	15	14	-11.8%
<b>Age group</b>										
Under 18 years	13	21	51	46	-9.8%	3	15	28	24	-11.8%
18 to 19 years	45	84	116	114	-1.7%	36	62	91	85	-6.1%
20 to 24 years	86	147	144	166	15.3%	64	108	108	121	12.4%
25 to 39 years	89	222	273	265	-2.9%	57	128	167	152	-9.0%
40 years and over	25	46	106	114	7.5%	10	27	53	50	-5.8%
<b>Female / Male</b>										
Female	141	303	410	425	3.7%	96	197	284	272	-4.0%
Male	117	217	280	280	0.0%	73	143	163	161	-1.4%
<b>Common fields of study</b>										
Agriculture, environmental and related studies	4	10	8	9	12.5%	3	6	3	2	-24.8%
Architecture and building	7	13	26	22	-15.4%	2	11	14	14	-3.4%
Creative arts	11	24	30	30	0.0%	11	20	23	24	2.5%
Education	27	54	61	58	-4.9%	20	32	44	39	-11.2%
Engineering and related technologies	24	43	69	60	-13.0%	9	22	37	30	-17.3%
Food, hospitality and personal services	9	14	26	34	30.8%	3	10	19	20	5.0%
Health	22	40	54	55	1.9%	14	30	35	37	6.8%
Information technology	8	42	51	54	5.9%	6	22	25	29	15.9%
Management and commerce	43	92	169	179	5.9%	24	49	89	91	3.0%
Mixed field programmes	40	90	112	115	2.7%	22	49	62	53	-14.1%
Natural and physical sciences	8	11	14	17	21.4%	6	9	11	13	19.4%
Society and culture	60	114	128	129	0.8%	49	81	86	81	-6.1%
<b>Sub-sector</b>										
Universities	82	125	158	172	8.9%	67	101	122	123	0.7%
Institutes of technology and polytechnics	159	224	331	324	-2.1%	87	133	191	163	-14.4%
Colleges of education	17	13	5	4	-20.0%	12	9	4	3	-36.6%
Wānanga	4	26	70	57	-18.6%	3	13	42	35	-16.9%
Public providers	258	385	545	546	0.2%	169	255	359	323	-9.8%
Private training establishments	na	138	151	175	15.9%	na	85	88	110	24.5%
<b>Study type</b>										
Full-time full-year	117	210	288	264	-8.3%	122	219	299	272	-8.9%
Full-time part-year	31	133	131	137	4.6%	18	68	67	66	-1.1%
Part-time full-year	70	82	111	122	9.9%	23	33	46	55	18.9%
Part-time part-year	40	95	160	182	13.8%	6	20	35	40	14.0%
<b>Gaining qualifications</b>										
Number of students who completed a qualification	63	104	149	166	11.4%					
Number of qualifications completed	64	107	162	176	8.6%					

<sup>1</sup> Students enrolled at any time during the year with a tertiary education provider in formal qualifications of greater than 0.03 EFTS (more than one week's duration).

<sup>2</sup> Students enrolled at any time during the year with a tertiary education provider in formal qualifications of less than 0.03 EFTS (less than one week's duration).

<sup>3</sup> Students enrolled at any time during the year with a tertiary education provider in informal programmes, i.e. programmes not registered on the New Zealand Register of Quality Assured Qualifications.

Note: The equivalent full-time student count used in this report does not equate to the funded equivalent full-time student count. The data is also not adjusted to allow for students who do not complete their study programme.

Other Pasifika tertiary education students by selected characteristics										
	Student enrolments					Equivalent full-time students				
	1996	2001	2005	2006	% change 05-06	1996	2001	2005	2006	% change 05-06
<b>Type of qualification (domestic students)</b>										
Students in formal qualifications > 0.03 EFTS <sup>1</sup>	214	614	979	1,017	3.9%	115	393	577	606	4.9%
Students in formal qualifications < 0.03 EFTS <sup>2</sup>	na	na	320	167	-47.8%	na	2	10	6	-40.0%
Students in informal education programmes <sup>3</sup>	na	na	355	268	-24.5%	na	15	23	16	-30.4%
<b>Domestic students enrolled in formal qualifications &gt; 0.03 EFTS<sup>1</sup></b>										
<b>Qualification level</b>										
Certificates 1-3	81	226	436	365	-16.3%	29	109	175	142	-18.9%
Certificates 4	10	48	121	143	18.2%	2	22	64	82	29.2%
Diplomas 5-7	52	119	151	148	-2.0%	27	71	89	80	-9.8%
Bachelors	63	211	297	340	14.5%	46	166	212	249	17.5%
Postgraduate	16	38	59	87	47.5%	11	26	39	53	36.6%
<b>Age group</b>										
Under 18 years	13	24	80	31	-61.3%	5	17	43	21	-50.6%
18 to 19 years	39	72	96	142	47.9%	33	60	84	112	33.5%
20 to 24 years	56	185	213	227	6.6%	35	139	157	162	2.9%
25 to 39 years	83	242	375	416	10.9%	33	135	198	220	10.7%
40 years and over	23	91	215	201	-6.5%	10	42	95	91	-4.4%
<b>Female / Male</b>										
Female	107	335	591	604	2.2%	58	217	364	369	1.3%
Male	107	279	388	413	6.4%	57	176	214	237	11.0%
<b>Common fields of study</b>										
Agriculture, environmental and related studies	5	13	20	27	35.0%	1	8	7	9	29.2%
Architecture and building	7	11	21	27	28.6%	3	7	9	13	38.3%
Creative arts	13	37	42	43	2.4%	11	30	34	37	9.1%
Education	9	41	91	72	-20.9%	5	30	53	42	-21.5%
Engineering and related technologies	22	55	58	66	13.8%	8	31	27	30	8.7%
Food, hospitality and personal services	7	19	27	27	0.0%	3	11	21	16	-21.6%
Health	9	34	61	76	24.6%	5	22	37	52	40.3%
Information technology	13	44	72	60	-16.7%	5	20	35	28	-21.4%
Management and commerce	76	168	272	272	0.0%	36	90	132	133	0.8%
Mixed field programmes	19	79	165	162	-1.8%	7	40	69	75	8.1%
Natural and physical sciences	14	28	44	50	13.6%	11	24	31	37	19.1%
Society and culture	29	121	191	206	7.9%	19	82	122	135	10.8%
<b>Sub-sector</b>										
Universities	63	246	338	423	25.1%	45	201	250	304	21.5%
Institutes of technology and polytechnics	145	189	390	366	-6.2%	67	96	166	158	-4.6%
Colleges of education	6	18	7	7	0.0%	3	10	5	3	-26.6%
Wānanga	0	21	103	74	-28.2%	0	11	48	34	-29.9%
Public providers	214	473	826	865	4.7%	115	318	469	500	6.5%
Private training establishments	na	141	169	167	-1.2%	na	75	108	106	-2.2%
<b>Study type</b>										
Full-time full-year	75	272	394	420	6.6%	75	280	387	404	4.6%
Full-time part-year	24	108	138	147	6.5%	9	48	68	72	6.0%
Part-time full-year	64	107	190	198	4.2%	23	40	72	81	13.0%
Part-time part-year	51	127	257	252	-1.9%	7	26	51	49	-5.2%
<b>Gaining qualifications</b>										
Number of students who completed a qualification	40	163	200	251	25.5%					
Number of qualifications completed	41	174	218	267	22.5%					

<sup>1</sup> Students enrolled at any time during the year with a tertiary education provider in formal qualifications of greater than 0.03 EFTS (more than one week's duration).

<sup>2</sup> Students enrolled at any time during the year with a tertiary education provider in formal qualifications of less than 0.03 EFTS (less than one week's duration).

<sup>3</sup> Students enrolled at any time during the year with a tertiary education provider in informal programmes, i.e. programmes not registered on the New Zealand Register of Quality Assured Qualifications.

Note: The equivalent full-time student count used in this report does not equate to the funded equivalent full-time student count. The data is also not adjusted to allow for students who do not complete their study programme.

## Pasifika international tertiary education students by selected characteristics

	Student enrolments					Equivalent full-time students				
	1996	2001	2005	2006	% change 05-06	1996	2001	2005	2006	% change 05-06
<b>Type of qualification</b>										
Students in formal qualifications > 0.03 EFTS <sup>1</sup>	85	1,496	1,354	1,607	18.7%	61	1,251	929	1,080	16.3%
Students in formal qualifications < 0.03 EFTS <sup>2</sup>	na	na	56	24	-57.1%	na	2	1	1	-38.6%
Students in informal education programmes <sup>3</sup>	na	na	152	247	62.5%	na	16	27	41	53.6%
<b>Domestic students enrolled in formal qualifications &gt; 0.03 EFTS<sup>1</sup></b>										
<b>Qualification level</b>										
Certificates 1-3	16	326	232	227	-2.2%	10	222	100	101	1.1%
Certificates 4	na	90	74	114	54.1%	na	52	36	53	50.2%
Diplomas 5-7	49	358	413	485	17.4%	31	278	279	328	17.7%
Bachelors	22	741	598	647	8.2%	16	624	413	430	4.1%
Honours and postgraduate cert./dip.	na	40	59	84	42.4%	na	26	43	50	16.9%
Masters	0	34	54	94	74.1%	0	31	33	77	131.1%
Doctorates	0	18	23	52	126.1%	0	17	25	41	63.0%
<b>Age group</b>										
Under 18 years	0	80	19	27	42.1%	0	82	16	23	47.5%
18 to 19 years	7	221	205	232	13.2%	6	217	180	196	9.1%
20 to 24 years	38	617	517	595	15.1%	26	550	398	458	15.0%
25 to 39 years	33	463	416	535	28.6%	24	353	243	305	25.6%
40 years and over	7	115	197	218	10.7%	5	49	91	97	6.2%
<b>Female / Male</b>										
Female	34	742	648	779	20.2%	27	629	437	552	26.4%
Male	51	754	706	828	17.3%	34	623	492	528	7.4%
<b>Common fields of study</b>										
Agriculture, environmental and related studies	na	57	33	43	30.3%	na	48	23	34	50.7%
Architecture and building	6	44	32	35	9.4%	4	35	19	17	-7.6%
Creative arts	na	35	17	18	5.9%	na	28	15	15	4.3%
Education	11	85	55	55	0.0%	9	78	37	44	19.5%
Engineering and related technologies	18	163	187	220	17.6%	12	141	128	111	-13.5%
Food, hospitality and personal services	0	11	12	42	250.0%	0	7	9	25	190.4%
Health	na	73	56	61	8.9%	na	62	44	44	0.7%
Information technology	6	100	133	103	-22.6%	3	77	93	88	-5.2%
Management and commerce	21	564	551	653	18.5%	13	401	323	409	26.7%
Mixed field programmes	6	153	97	160	64.9%	2	116	52	89	70.7%
Natural and physical sciences	7	125	85	108	27.1%	3	117	73	81	11.1%
Society and culture	11	191	149	150	0.7%	10	143	114	121	6.8%
<b>Sub-sector</b>										
Universities	13	686	498	682	36.9%	10	641	418	541	29.4%
Institutes of technology and polytechnics	60	572	685	742	8.3%	40	410	398	406	1.9%
Colleges of education	13	27	19	14	-26.3%	11	26	6	10	65.9%
Wānanga	0	na	0	0	-	0	1	0	0	-
Public providers	85	1,279	1,199	1,435	19.7%	61	1,077	822	957	16.4%
Private training establishments	na	221	156	173	10.9%	na	174	106	124	16.0%
<b>Study type</b>										
Full-time full-year	43	984	663	754	13.7%	44	1,051	688	786	14.2%
Full-time part-year	11	173	257	338	31.5%	6	85	100	133	33.2%
Part-time full-year	23	129	175	189	8.0%	8	72	87	88	0.4%
Part-time part-year	8	210	259	326	25.9%	2	44	53	73	37.8%
<b>Gaining qualifications</b>										
Number of students who completed a qualification	na	386	321	354	10.3%					
Number of qualifications completed	na	431	337	370	9.8%					

<sup>1</sup> Students enrolled at any time during the year with a tertiary education provider in formal qualifications of greater than 0.03 EFTS (more than one week's duration).

<sup>2</sup> Students enrolled at any time during the year with a tertiary education provider in formal qualifications of less than 0.03 EFTS (less than one week's duration).

<sup>3</sup> Students enrolled at any time during the year with a tertiary education provider in informal programmes, i.e. programmes not registered on the New Zealand Register of Quality Assured Qualifications.

Note: The data is not adjusted to allow for students who do not complete their study programme.