



Central Forecasting and Modelling Unit

Quarterly Migration Report

June 2008 Quarter

Michael Chang

July 2008

Data Source – Statistics New Zealand

Executive Summary

In the year ending June 2008 we saw the highest level of permanent and long-term (PLT) departures of 0 to 17 year-olds since 1993. Coupled with slightly lower arrivals, we have seen a decline in net PLT migration from 3,682 in the June 2007 year to 1,443 in the June 2008 year.

For the June 2008 quarter, there was an overall net PLT migration outflow of 107. This consists of a net outflow of 213 pre-school-age children, a net outflow of 57 primary school-age children and a net inflow of 163 secondary school-age children. The overall level of outflow is similar compared to same quarter last year.

Table 1. Net Migration for the Year and Quarter ending June 2008

Net Migration	Year Ending			Quarter Ending		
	June 2007 *	June 2008 *	Difference **	June 2007 *	June 2008 *	Difference **
Pre-School	596	-45	-641	-111	-213	-102
Primary School	1,411	287	-1,124	8	-57	-65
Secondary School	1,675	1,201	-474	58	163	105
Total	3,682	1,443	-2,239	-45	-107	-62

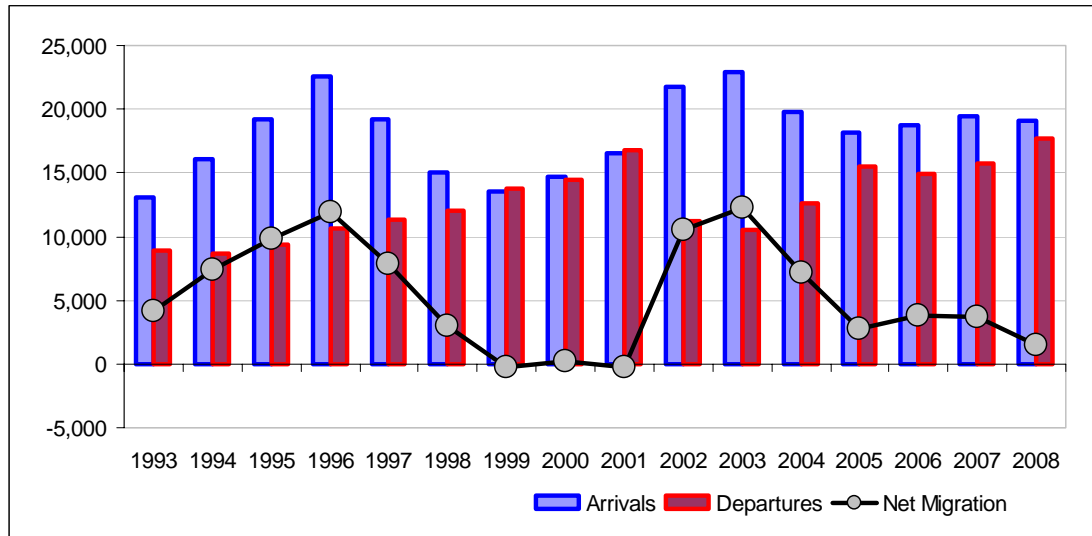
* Positive means there was a net migration inflow; negative represents a migration outflow.

** Positive means net migration has increased compared to same period last year.

Historical Overview of New Zealand Migration (June Years)

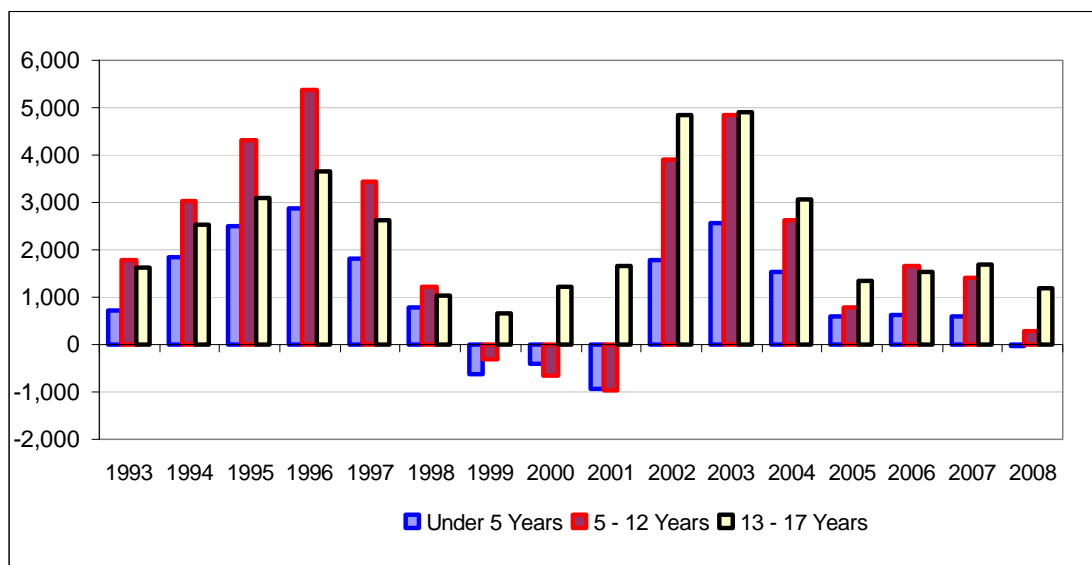
Net permanent and long-term (PLT) migration for school-age and pre-school-age children has varied considerably over the past decade, with high levels of migration seen in 1996 and 2003. For the year ending June 2008, we saw the highest level of PLT departures of 0 to 17 year-olds since 1993¹ (17,689). Coupled with lower arrivals, net PLT migration has fallen from 3,682 in 2007 to 1,443 in 2008.

Figure 1. Arrivals, Departures and Net PLT Migration of 0 to 17 Year-Olds Years Ended June 1993-2008



Secondary school-age (13 to 17 year-olds) migration shows distinctive patterns compared to other age groups. This group has experienced consistent levels of net PLT migration inflows, even in years where other age groups experienced net migration outflows. This is illustrated in Figure 2.

Figure 2. Net PLT Migration by Age Group, Years Ended June 1993-2008



¹ January 1992 is the first month in which the ministry has received PLT data from Statistics New Zealand. Year ending June 1993 is the first year of complete data.

Arrival Sources and Departure Destinations (June Quarter)

Net PLT migration does not always provide the full picture. For example, a high level of arrivals coupled with a high level of departures will result in low net migration figures. However, high arrivals could have a large impact on classrooms due to the diverse needs of children with different languages and cultural backgrounds.

For the June 2008 quarter, 3,955 pre-school-age and school-age children arrived in New Zealand and 4,062 departed overseas. The overall effect was a net PLT migration outflow of 107. Asia remains the major source of migration arrivals (representing 32.4% of overall arrivals) and Oceania is still the most popular departure destination (representing 73.1% of overall departures).

**Table 2. Permanent and Long-term Migration by Source / Destination
0 to 17 Year-Olds, June 2008 Quarter**

Region	Arrivals	Departures	Net Migration
Oceania	1,191	2,971	-1,780
Asia	1,283	269	1,014
Europe	730	441	289
Americas	196	247	-51
Other	555	134	421
Total	3,955	4,062	-107

Looking at the individual country levels, Australia topped the chart with 628 PLT migrants arriving in New Zealand in the June 2008 quarter. However, Australia is also by far the most popular departure destination with over 2,800 0- to 17-year-olds migrating there. Table 3 below shows the top 5 arrival sources and departure destinations in the June 2008 quarter.

**Table 3. Top 5 Arrival Sources and Departure Destinations
0 to 17 Year-Olds, June 2008 Quarter**

Country	Arrivals	Country	Departures
Australia	628	Australia	2,848
United Kingdom	598	United Kingdom	272
Philippines	437	USA	153
South Africa	269	Canada	66
Fiji	233	Republic of Korea	64

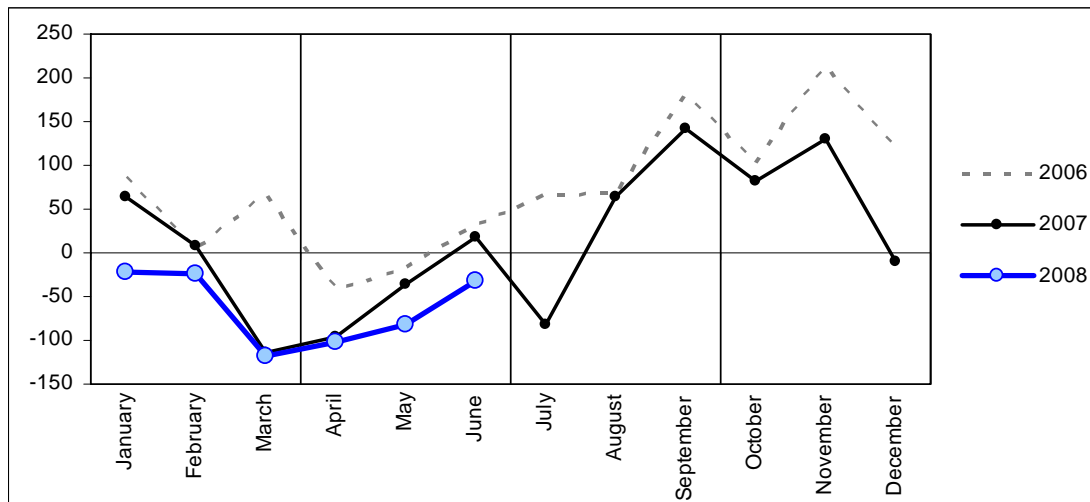
School-Age and Pre-School-Age Migration (June Quarter)

Overall, we are seeing similar levels of migration movements in all three age groups compared to same quarter last year.

Pre-School PLT Migration

For the quarter ended June 2008, net PLT migration of pre-school-age children (0 to 4 year-olds) was -213 overall, representing a net outflow (Figure 3). This is lower than the migration outflow experienced in the June 2007 quarter (with an overall net migration of -111) and is considerably lower than the high levels of migrations seen in 2002 and 2003. The decrease is mostly due to higher level of departures (186 more compared to same time last year).

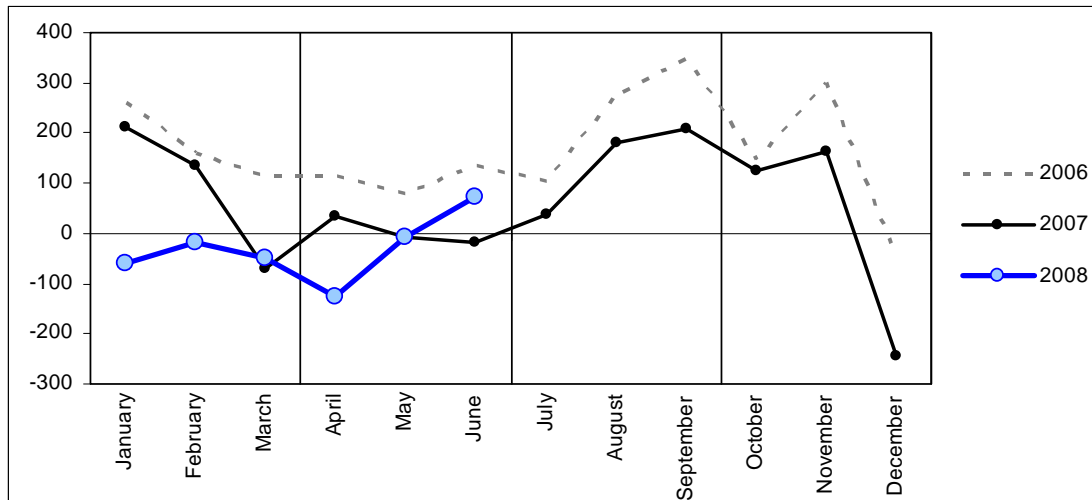
Figure 3. Monthly Net PLT Migration of Pre-School-Age Migrants (2006- 2008)



Primary School PLT Migration

For the quarter ended June 2008, net PLT migration of primary-school-age children (5 to 12 year-olds) was -57 overall, representing a net outflow (Figure 4). This compares to a migration inflow of 8 experienced in the June 2007 quarter and is considerably lower than the high levels of migrations seen in 2002 and 2003. The decrease is also mostly due to higher level of departures (125 more).

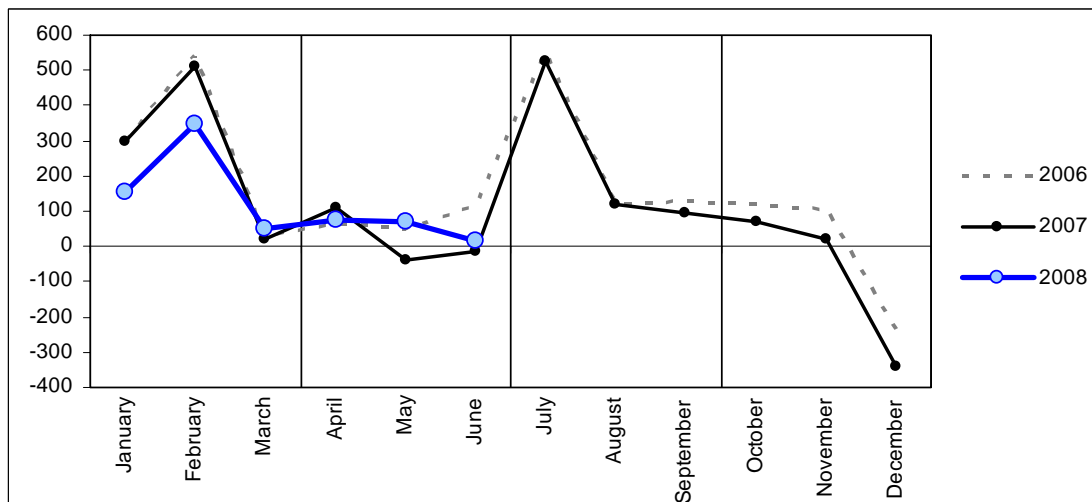
Figure 4. Monthly Net PLT Migration of Primary-Age Migrants (2006-2008)



Secondary School PLT Migration

For the quarter ended June 2008, net PLT migration of secondary-school-age children (13 to 17 year-olds) was 163 overall, and is the only age group we monitor that experienced a net migration inflow this quarter (Figure 5). This is above the level of inflow experienced in the June 2007 quarter (with an overall net migration of 58) but is considerably lower than the high levels of migrations seen in 2002 and 2003. The increase is mostly due to higher level of arrivals (145 more compared to same time last year).

Figure 5. Monthly Net PLT Migration of Secondary-Age Migrants (2006- 2008)



Appendix: Definitions

Permanent and Long-Term Arrivals consist of overseas migrants who arrive in NZ intending to stay for a period of 12 months or more, plus NZ residents returning after an absence of 12 months or more.

Permanent and Long-Term Departures include NZ residents departing for an intended period of 12 months or more plus overseas visitors departing from NZ after a stay of 12 months or more.

Net Permanent and Long-Term Migrants are calculated as the arrivals minus departures. Permanent and long-term migrants include students and those on working and holiday visas or permits, where the person does not intend (at least initially) to remain permanently in the country.

Note that the number of net PLT school-age migrants does not translate directly into the number of extra pupils in schools. Migrant children may enter schools as regular students (i.e. with their parents who become residents), foreign fee paying students, or they may not enter schools at all. A migrant may also indicate that they are here for a short-term visit but end up enrolling in a school over consecutive years or alternatively indicate that they are here on a permanent basis and end up only staying for a much shorter period. Hence the net PLT migration data is limited and should only be viewed as indicative of the number of migrant children here for an extended period.

Net Inflow occurs when arrivals exceed departures.

Net Outflow occurs when departures exceed arrivals.